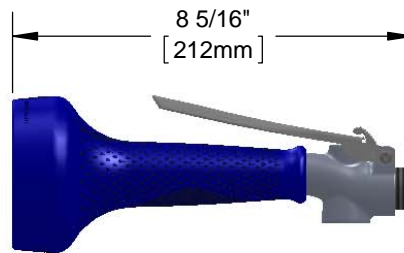
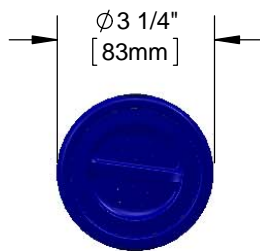
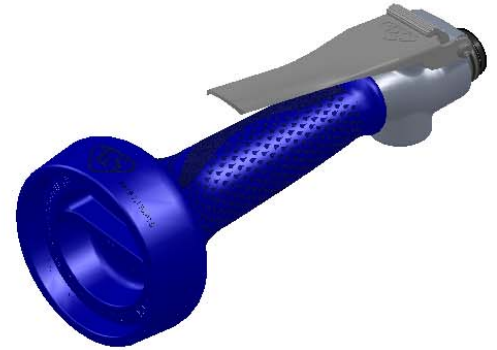




#### Architect/Engineering Specifications:

High flow spray valve with polished chrome plated brass body, stainless steel trigger and 7/8-20 UN male inlet. Certified to ASME A112.18.1/CSA B125.1, NSF 61-Section 9 and NSF 372.

Job Name _____
Model Specified _____ Quantity _____
Variations Specified _____
Date _____



#### Features & Benefits:

- Forged brass body
- High flow JeTSpray valve
- 7/8-20 UN male inlet
- Fast action trigger
- Heat insulated handle with crush resistant grip
- Smart one-handed trigger lock
- Removable screen filter
- Material: Polished chrome plated brass body and insulated grip handle

#### Product Compliance:

- ASME A112.18.1 / CSA B125.1
- NSF 61 - Section 9
- NSF 372 (Low Lead Content)
- EPA Act 2005 Non-Compliant (PRSV)
- Product Not Designed/Intended For Commercial Warewashing in North America



**Warranty:** One Year (Limited)

#### Performance Data:

- Pressure: 20 - 125 psi
- Temperature: 40 °F - 140 °F
- Flow Rate: 3.28 GPM @ 60 psi

