



T&S BRASS AND BRONZE WORKS, INC.

2 Saddleback Cove / P.O. Box 1088
Travelers Rest, SC 29690

Model No.

B-2486

Item No.

Travelers Rest, SC: 800-476-4103 • Simi Valley, CA: 800-423-0150 • Fax: 864-834-3518 • www.tsbrass.com



ADA Compliant

This Space for Architect/Engineer Approval

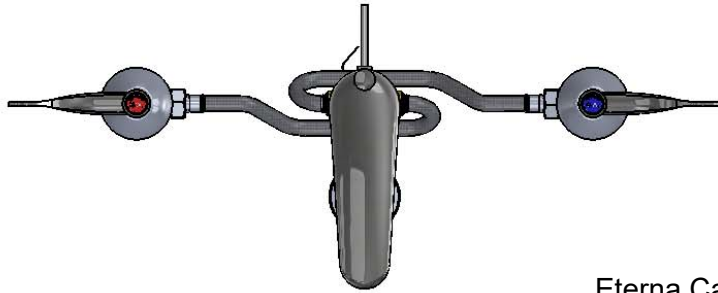
Job Name _____ Date _____

Model Specified _____ Quantity _____

Customer/Wholesaler _____

Contractor _____

Architect/Engineer _____



Eterna Cartridges &
4" Wrist Action
Handles w/ Color
Coded Indexes

Cast Spout w/
2.2 GPM Aerator

12" Stainless Steel
Flexible Hose

Ø2 1/4" [57mm]
Escutheons

3 1/16"
[77mm]

2"
[50mm]

5"
[127mm]

Mounting
Surface
1 1/4"
[32mm]
Maximum
Thickness

Pop-Up Drain

8 1/16"
[205mm]

Ø1 1/4"
Tailpiece

4 1/4"
[108mm]

Adjustable Inlet Centers
6" to 24"
[152mm to 610mm]

1/2" NPSM
Coupling Nuts

Rough-In Requirements:
Center Shank: Ø 1" [Ø 25mm] Mounting Hole
Hot/Cold Bodies: Ø 1 1/2" [Ø 38mm] Mounting Hole

Product Specifications:
Adjustable Concealed Deck Mount Mixing Faucet w/ Wrist Action Handles,
5" Cast Spout w/ 2.2 GPM Aerator, 1/2" NPSM Brass Coupling Nuts &
Pop-Up Drain

Product Compliance:
ASME A112.18.1 / CSA B125.1
NSF 61 - Section 9
NSF 372 (Low Lead Content)
ANSI A117.1 (ADA)

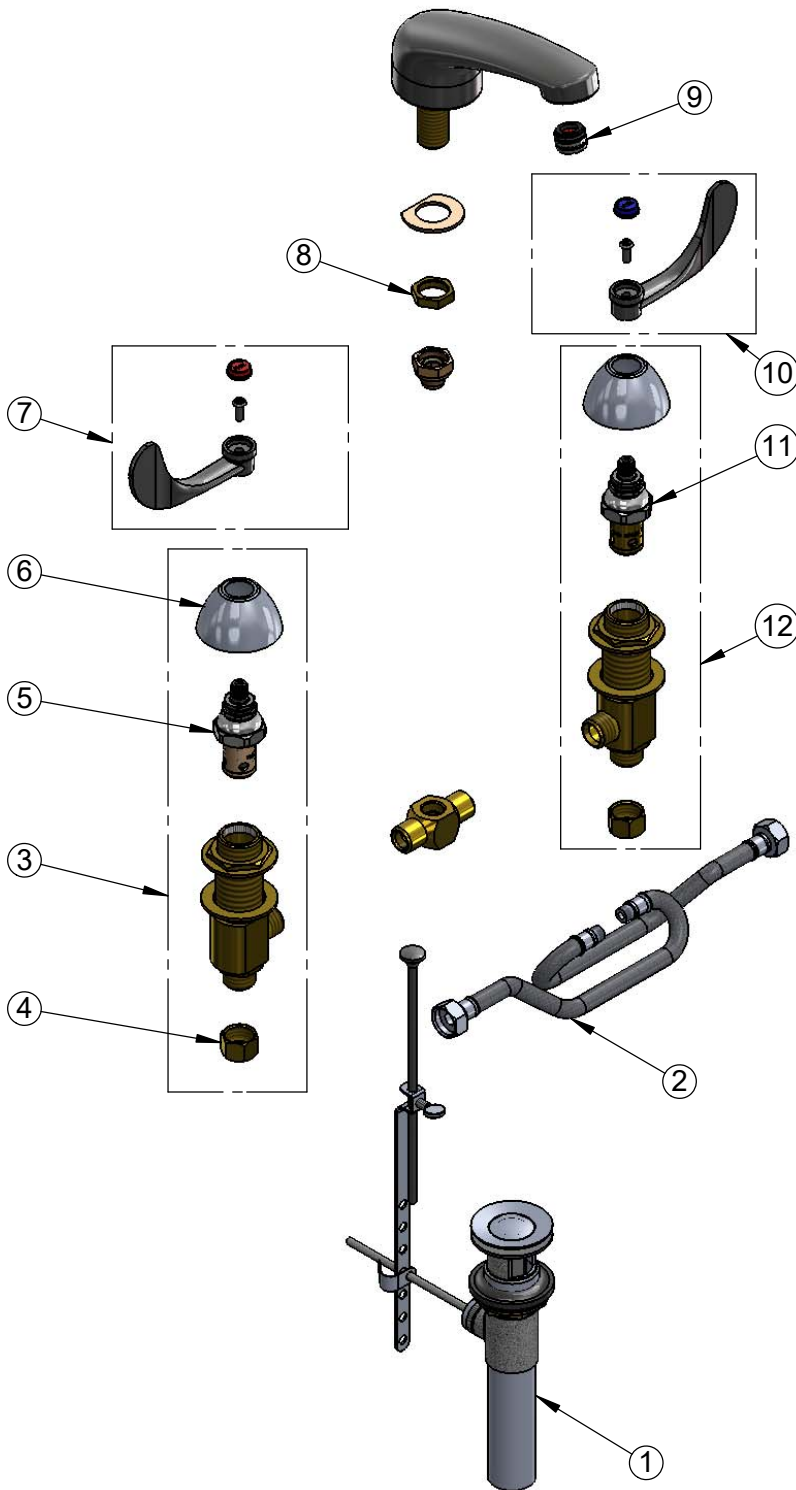


T&S BRASS AND BRONZE WORKS, INC.
 2 Saddleback Cove / P.O. Box 1088
 Travelers Rest, SC 29690

Model No.
B-2486
 Item No.

Travelers Rest, SC: 800-476-4103 • Simi Valley, CA: 800-423-0150 • Fax: 864-834-3518 • www.tsbrass.com

ITEM NO.	SALES NO.	DESCRIPTION
1	B-0898	Pop-Up Drain
2	011649-45	Nut, B-0850
3	162A	B-0850 Side Body - Hot
4	000958-20	Coupling Nut
5	006478-40	Eterna Cartridge, RTC (Teflon) w/ Escutcheon Bonnet
6	001257-40	Bell Escutcheon
7	B-WH4H	4" Wrist Action Handle w/ Red Index Cap and Screw
8	002954-45	Shank Lock Nut
9	B-0199-03	2.2 GPM Aerator
10	B-WH4	4" Wrist Action Handle w/ Blue Index Cap and Screw
11	006477-40	Eterna Cartridge, LTC (Teflon) w/ Escutcheon Bonnet
12	161A	B-0850 Side Body - Cold



Product Specifications:
 Adjustable Concealed Deck Mount Mixing Faucet w/ Wrist Action Handles, 5" Cast Spout w/ 2.2 GPM Aerator, 1/2" NPSM Brass Coupling Nuts & Pop-Up Drain

Product Compliance:
 ASME A112.18.1 / CSA B125.1
 NSF 61 - Section 9
 NSF 372 (Low Lead Content)
 ANSI A117.1 (ADA)