



T&S BRASS AND BRONZE WORKS, INC.

2 Saddleback Cove / P.O. Box 1088
Travelers Rest, SC 29690

Model No.

B-0921

Item No.

Travelers Rest, SC: 800-476-4103 • Simi Valley, CA: 800-423-0150 • Fax: 864-834-3518 • www.tsbrass.com



ADA Compliant

This Space for Architect/Engineer Approval

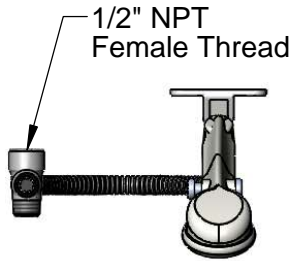
Job Name _____ Date _____

Model Specified _____ Quantity _____

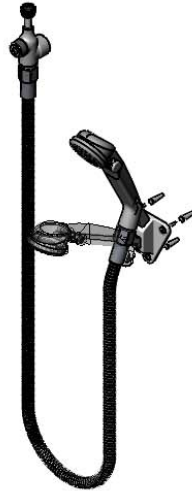
Customer/Wholesaler _____

Contractor _____

Architect/Engineer _____



1/2" NPT
Female Thread



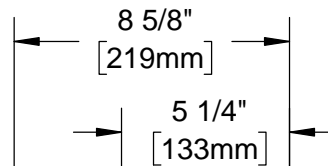
Shower Head
Not Included

Removable Hand Spray w/
2.0 GPM Flow Control Device
Installed in Handle Inlet

Thumb Valve Switches Between
Full Flow (2.0 GPM) and Water
Saving Trickle (0.5 GPM)

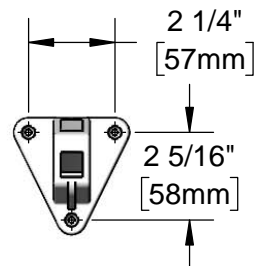
Wall Bracket to Hold
Spray Head at Two
Angles

60" [1524mm]
Flexible Stainless
Steel Hose



Alternate Hand
Spray Position

Mounting
Position



Product Specifications:

Chrome Plated Brass Diverter Valve, Shower Queen Hand Spray w/ 2.0 GPM Flow Control, Wall Bracket, 60" Flexible Stainless Steel Hose & 1/2" NPT Female Inlet

Product Compliance:

ASME A112.18.1 / CSA B125.1
NSF 61 Exempt (Non-Potable)
ANSI A117.1 (ADA)



T&S BRASS AND BRONZE WORKS, INC.
 2 Saddleback Cove / P.O. Box 1088
 Travelers Rest, SC 29690

Model No.
B-0921

Item No.

Travelers Rest, SC: 800-476-4103 • Simi Valley, CA: 800-423-0150 • Fax: 864-834-3518 • www.tsbrass.com

ITEM NO.	SALES NO.	DESCRIPTION
1	014569-45	Face Seal
2	013E-60H	60" Flexible Stainless Steel Hose
3	SQ-0095	Hand Spray, Shower Queen
4	SQ-0092	Wall Bracket



Product Specifications:

Chrome Plated Brass Diverter Valve, Shower Queen Hand Spray w/
 2.0 GPM Flow Control, Wall Bracket, 60" Flexible Stainless Steel Hose
 & 1/2" NPT Female Inlet

Product Compliance:

ASME A112.18.1 / CSA B125.1
 NSF 61 Exempt (Non-Potable)
 ANSI A117.1 (ADA)