



T&S BRASS AND BRONZE WORKS, INC.

2 Saddleback Cove / P.O. Box 1088
Travelers Rest, SC 29690

Model No.

B-0682-107

Item No.

Travelers Rest, SC: 800-476-4103 • Simi Valley, CA: 800-423-0150 • Fax: 864-834-3518 • www.tsbrass.com

This Space for Architect/Engineer Approval

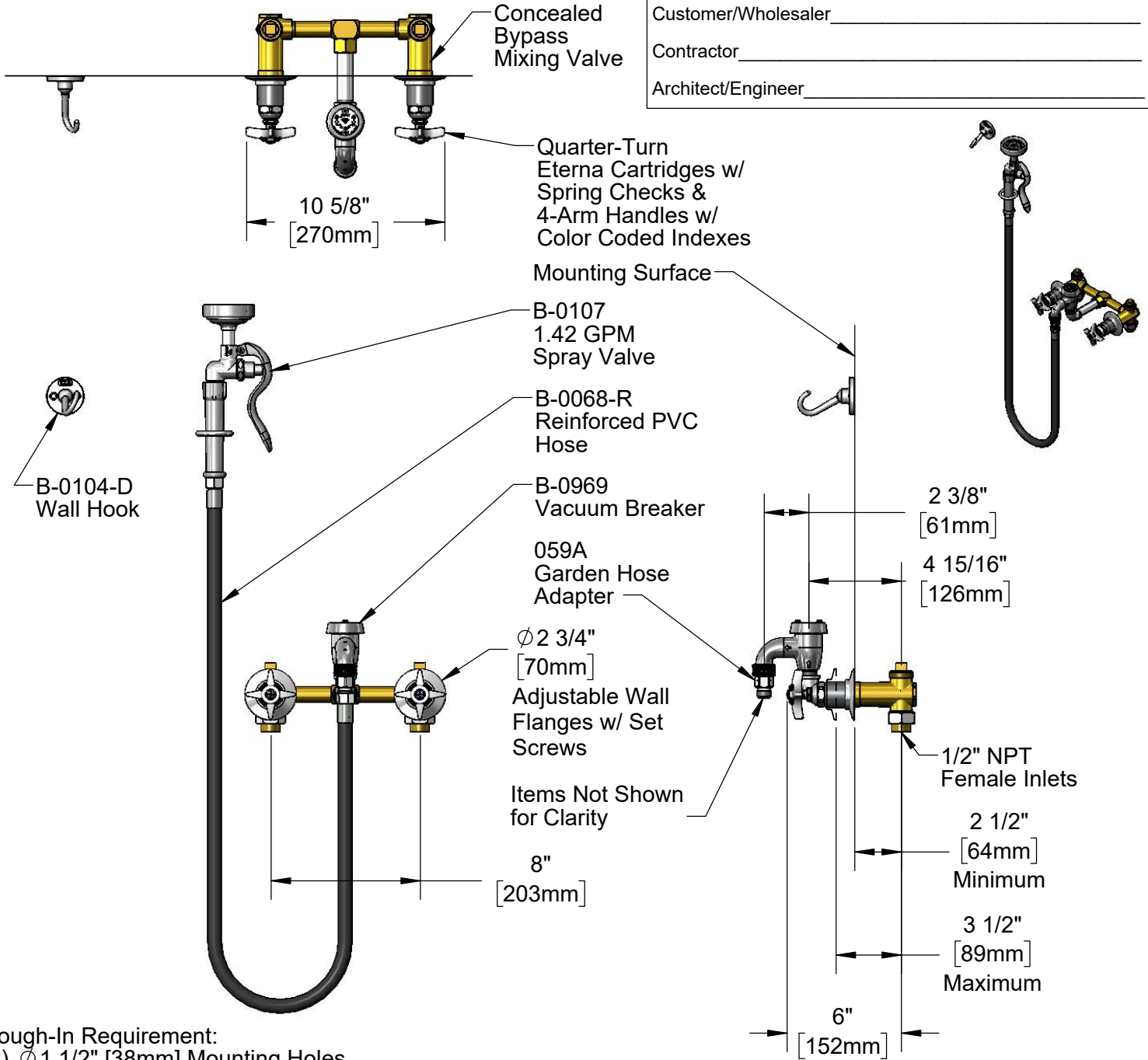
Job Name _____ Date _____

Model Specified _____ Quantity _____

Customer/Wholesaler _____

Contractor _____

Architect/Engineer _____



Rough-In Requirement:
(2) φ 1 1/2" [38mm] Mounting Holes for Concealed Mixing Valve

Product Specifications:

Bedpan Washer, Quarter-Turn Eterna Cartridges w/ Spring Checks, 4-Arm Handles, Concealed Bypass Mixing Valve, Vacuum Breaker, 68" Reinforced PVC Hose, 1.42 GPM Spray Valve, Wall Hook & 1/2" NPT Female Inlets

Product Compliance:

ASME A112.18.1 / CSA B125.1
NSF 61 - Section 9
NSF 372 (Low Lead Content)
ASSE 1001 (VB)
EPA Act 2005 (PRSV)

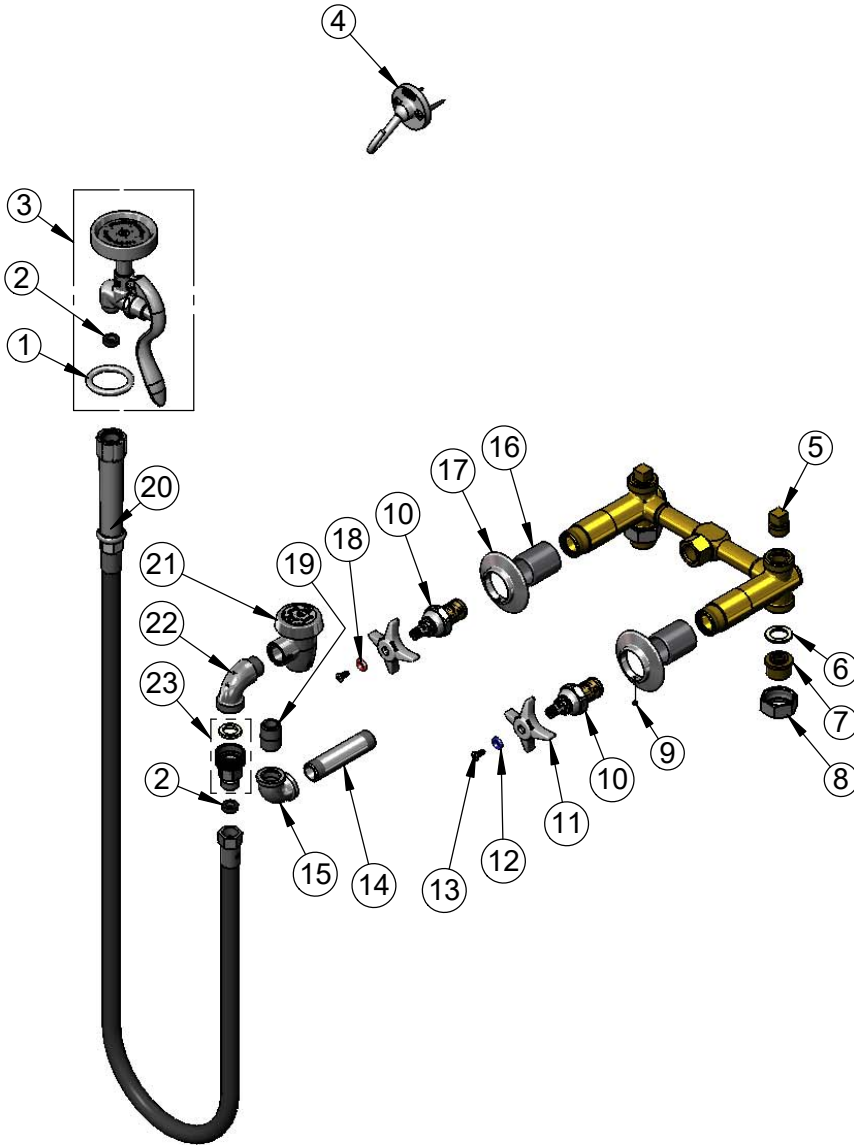


T&S BRASS AND BRONZE WORKS, INC.
 2 Saddleback Cove / P.O. Box 1088
 Travelers Rest, SC 29690

Model No.
B-0682-107

Item No.

Travelers Rest, SC: 800-476-4103 • Simi Valley, CA: 800-423-0150 • Fax: 864-834-3518 • www.tsbrass.com



| ITEM NO. | SALES NO. | DESCRIPTION |
|----------|-----------|--|
| 1 | 000907-45 | Spray Valve Hold Down Ring |
| 2 | 010476-45 | #27 Washer |
| 3 | B-0107 | 1.42 GPM Spray Valve |
| 4 | B-0104-D | Wall Hook |
| 5 | 001347-20 | 1/2" NPT Square Head Plug |
| 6 | 001019-45 | Coupling Nut Washer |
| 7 | 153F | Union Half, 1/2 NPT w/ Washer |
| 8 | 000721-25 | Flange Coupling Nut |
| 9 | 000939-45 | Escutcheon, Set Screw |
| 10 | 012443-40 | Quarter-Turn Eterna Cartridge w/ Spring Check, RTC |
| 11 | 002521-45 | 4-Arm Handle |
| 12 | 001660-45 | Blue Index-CW |
| 13 | 000922-45 | Lever Handle Screw |
| 14 | 002556-40 | Nipple, 1/2" x 3 1/2" |
| 15 | 001357-40 | Cast Elbow, 1/2" |
| 16 | 151F | Escutcheon Tube |
| 17 | 001501-40 | Escutcheon |
| 18 | 001661-45 | Red Index-HW |
| 19 | 002534-25 | Close Nipple, 1/2" NPT |
| 20 | B-0068-R | 68" Reinforced PVC Hose w/ Handle |
| 21 | B-0969 | 1/2" NPT Vacuum Breaker |
| 22 | 001618-40 | Spout, Short |
| 23 | 059A | Adapter, Garden Hose Female x 3/4"-14UN Male |

Product Specifications:

Bedpan Washer, Quarter-Turn Eterna Cartridges w/ Spring Checks, 4-Arm Handles, Concealed Bypass Mixing Valve, Vacuum Breaker, 68" Reinforced PVC Hose, 1.42 GPM Spray Valve, Wall Hook & 1/2" NPT Female Inlets

Product Compliance:

ASME A112.18.1 / CSA B125.1
 NSF 61 - Section 9
 NSF 372 (Low Lead Content)
 ASSE 1001 (VB)
 EPAAct 2005 (PRSV)