



T&S BRASS AND BRONZE WORKS, INC.
 2 Saddleback Cove / P.O. Box 1088
 Travelers Rest, SC 29690

Model No.
018565-45

Item No.

Travelers Rest, SC: 800-476-4103 • Simi Valley, CA: 800-423-0150 • Fax: 864-834-3518 • www.tsbrass.com

This Space for Architect/Engineer Approval

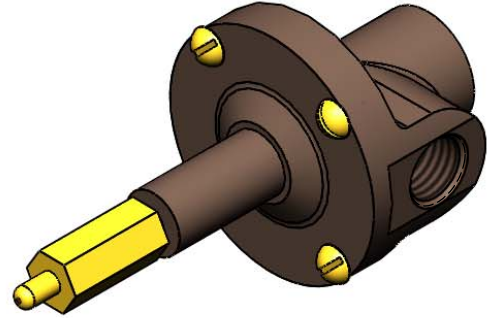
Job Name _____ Date _____

Model Specified _____ Quantity _____

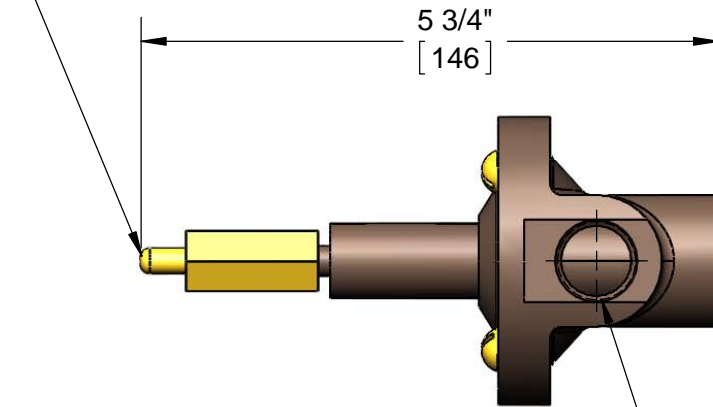
Customer/Wholesaler _____

Contractor _____

Architect/Engineer _____

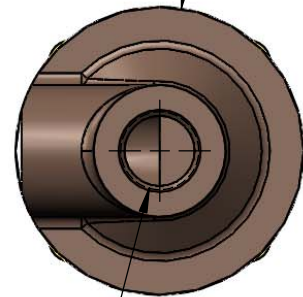


Actuation Rod
 Actuation Travel = 3/8"
 Push to Latch Open,
 Push to Close



Inlet
 1/2 NPT Female

Ø 3"
 [76mm]



Outlet
 1/2 NPT Female

Product Specifications:
 Water Control Valve, Cast Brass, 1/2 NPT Inlet and Outlet

Drawn

GEF

Checked

DMH

Approved

JHB

Scale:

1:4

Date:

11/29/12