



# T&S BRASS AND BRONZE WORKS, INC.

2 Saddleback Cove / P.O. Box 1088  
Travelers Rest, SC 29690

Model No.

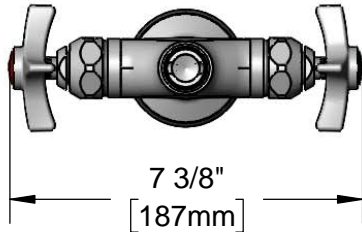
**007253-40**

Item No.

Travelers Rest, SC: 800-476-4103 • Simi Valley, CA: 800-423-0150 • Fax: 864-834-3518 • www.tsbrass.com



**ADA Compliant**



This Space for Architect/Engineer Approval

Job Name \_\_\_\_\_ Date \_\_\_\_\_

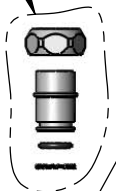
Model Specified \_\_\_\_\_ Quantity \_\_\_\_\_

Customer/Wholesaler \_\_\_\_\_

Contractor \_\_\_\_\_

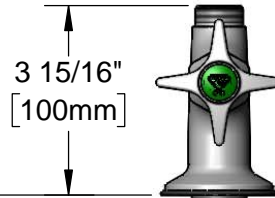
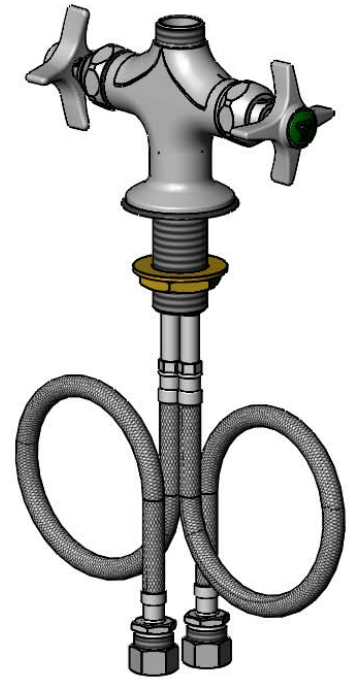
Architect/Engineer \_\_\_\_\_

**EZ-K  
EasyInstall Kit**  
Converts Rigid Risers &  
Nozzles For Use with  
Swivel Outlet (Included)



Swivel Outlet Accepts  
Standard T&S Swing Nozzles  
and EasyInstall Risers.

Quarter-Turn Eterna  
Cartridges w/ Spring  
Checks & 4-Arm Handles  
w/ Color Coded Indexes



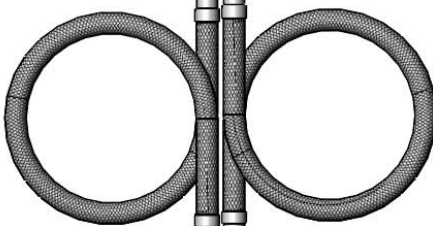
Mounting  
Surface

3 15/16"  
[100mm]

Ø 2 7/16"  
[62mm]  
Deck Gasket

Ø 1 1/8"  
[29mm]

1 5/16"  
[34mm]  
Maximum  
Thickness



18" Flexible  
Stainless Steel  
Supply Hoses

Compression Fittings  
for 5/8" O.D. Copper Tubing  
(Remove Compression Nut  
for 1/2" NPSM Male)

**Rough-In Requirement:**  
Ø 1 1/2" [38mm] Mounting Hole

**Product Specifications:**

Single Hole Deck Mount Mixing Faucet, Quarter-Turn Eterna Cartridges w/  
Spring Checks, 4-Arm Handles & 18" Flexible Stainless Steel Supply Hoses w/  
1/2" NPSM Inlets, Less Nozzle

**Product Compliance:**

ASME A112.18.1 / CSA B125.1  
NSF 61 - Section 9  
NSF 372 (Low Lead Content)  
ANSI A117.1 (ADA)



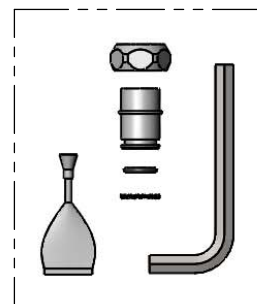
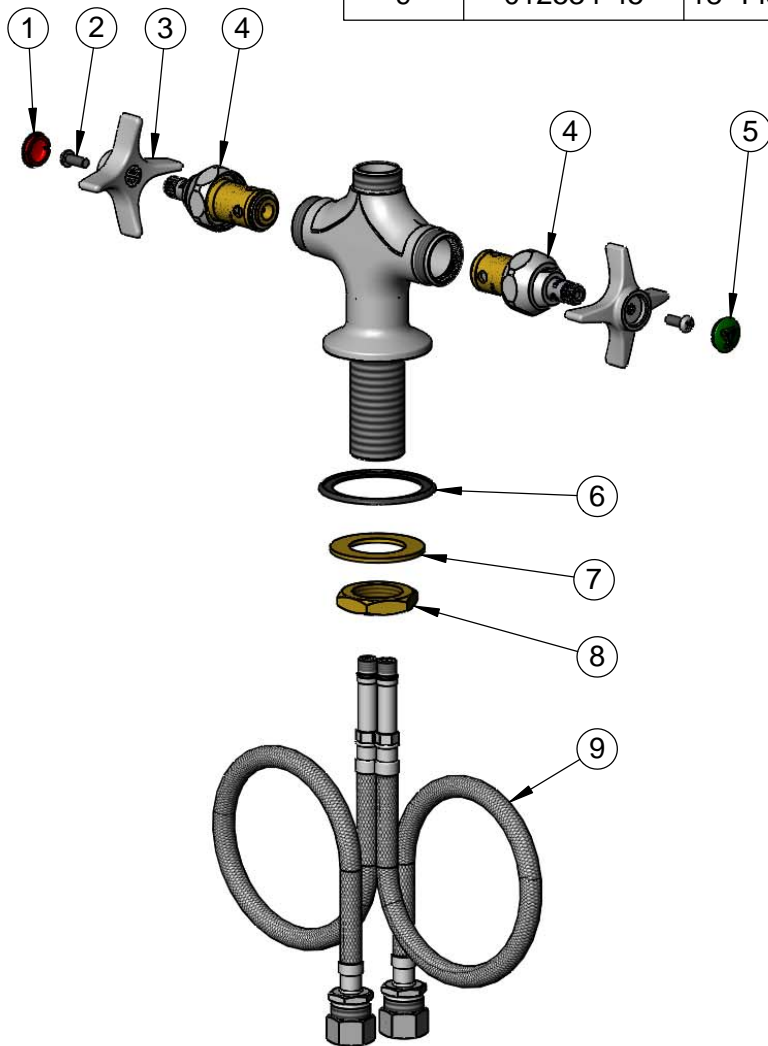
**T&S BRASS AND BRONZE WORKS, INC.**  
 2 Saddleback Cove / P.O. Box 1088  
 Travelers Rest, SC 29690

Model No.  
**007253-40**

Item No.

Travelers Rest, SC: 800-476-4103 • Simi Valley, CA: 800-423-0150 • Fax: 864-834-3518 • www.tsbrass.com

ITEM NO.	SALES NO.	DESCRIPTION
1	019736-45	Red "HW" Lab Button Index
2	000925-45	Lab Handle Screw
3	000059-40	4-Arm Lab Handle
4	012443-40NS	Quarter-Turn Eterna Cartridge w/ Spring Check, RTC
5	001191-45NS	Green "CW" Lab Button Index
6	145L	Black Plastic Gasket
7	002290-45	Lock Washer
8	000965-45	Lock Nut
9	012534-45	18" Flexible Supply Hose (2)



**EZ-K**  
 Converts Rigid Outlets to  
 EasyInstall for Use with  
 T&S Swivel Base Faucets

**Product Specifications:**

Single Hole Deck Mount Mixing Faucet, Quarter-Turn Eterna Cartridges w/ Spring Checks, 4-Arm Handles & 18" Flexible Stainless Steel Supply Hoses w/ 1/2" NPSM Inlets, Less Nozzle

**Product Compliance:**

ASME A112.18.1 / CSA B125.1  
 NSF 61 - Section 9  
 NSF 372 (Low Lead Content)  
 ANSI A117.1 (ADA)