



T&S BRASS AND BRONZE WORKS, INC.
 2 Saddleback Cove / P.O. Box 1088
 Travelers Rest, SC 29690

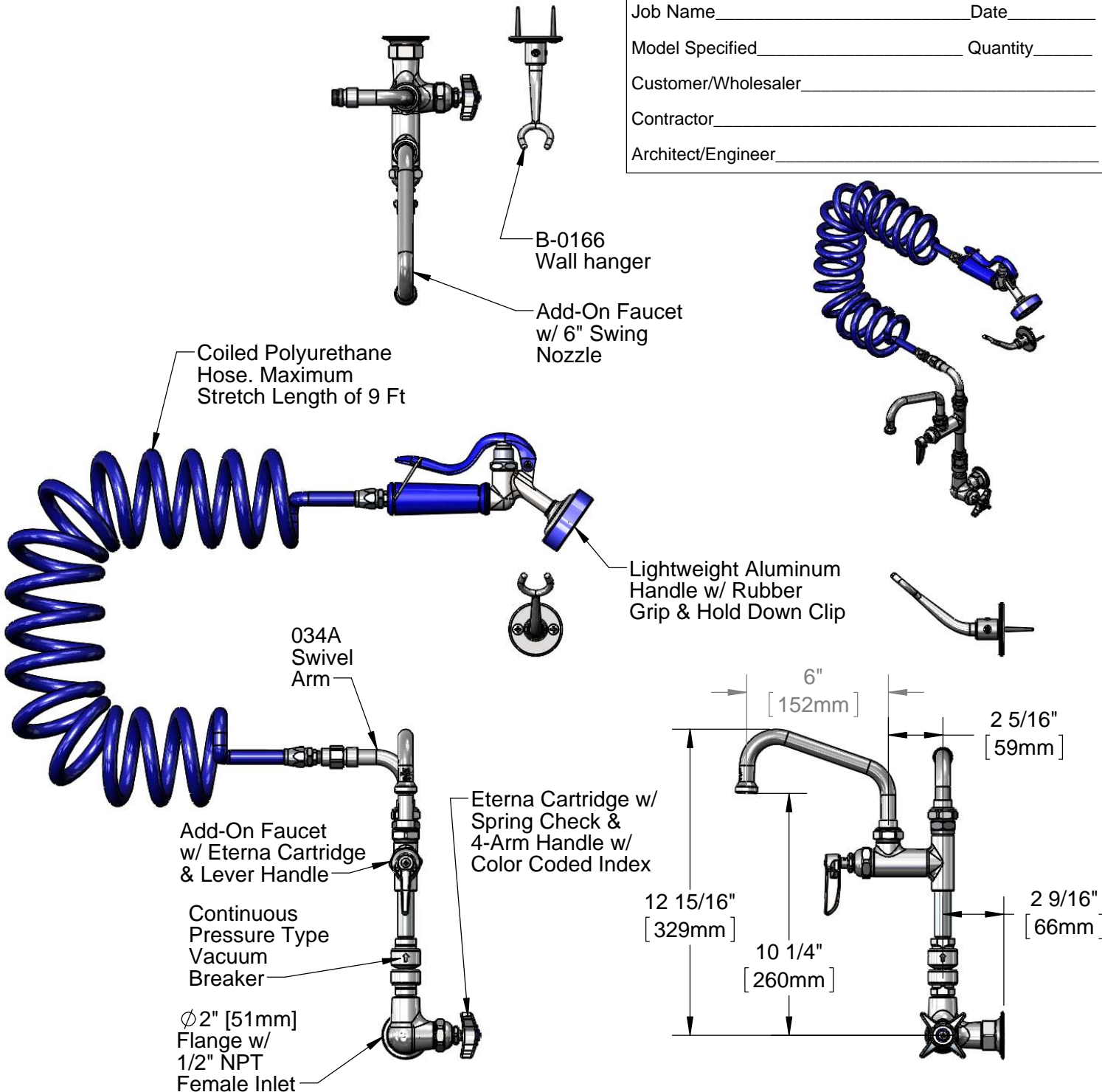
Model No.
PG-1WSAV-06

Item No.

Travelers Rest, SC: 800-476-4103 • Simi Valley, CA: 800-423-0150 • Fax: 864-834-3518 • www.tsbrass.com

This Space for Architect/Engineer Approval

Job Name _____ Date _____
 Model Specified _____ Quantity _____
 Customer/Wholesaler _____
 Contractor _____
 Architect/Engineer _____



Product Specifications:
Pet Grooming Unit:
 Single Hole Wall Mount Faucet, Eterna Cartridge w/ Spring Check,
 Add-On Faucet w/ 6" Swing Nozzle, Vacuum Breaker, 9 Ft Coiled Hose,
 & Angled Aluminum Spray Valve

Drawn KJG	Checked DMH	Approved JHB
Scale: 1:6		Date: 09/19/13



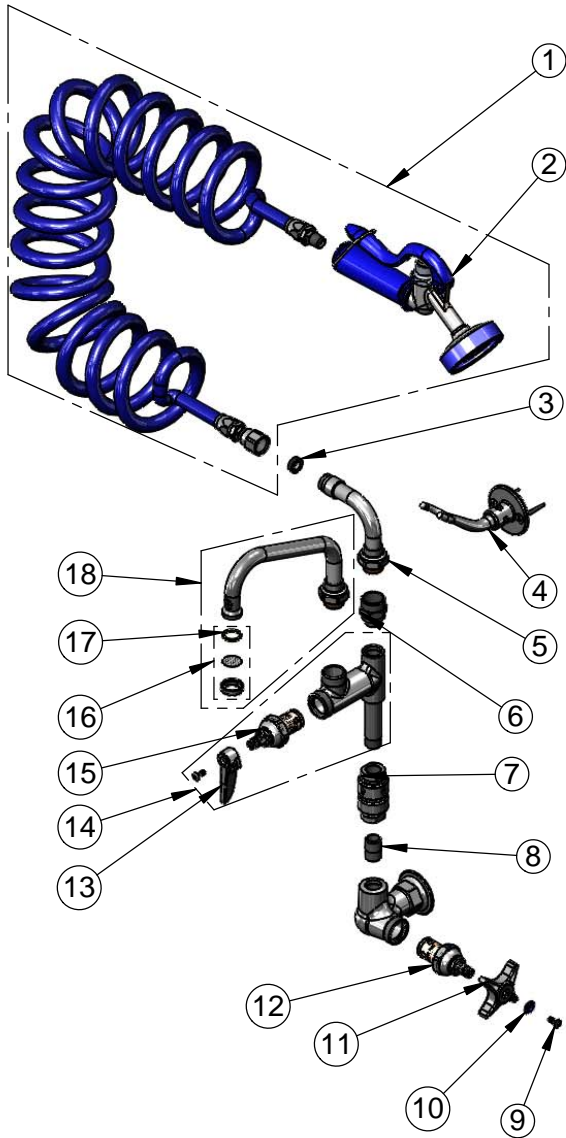
T&S BRASS AND BRONZE WORKS, INC.
 2 Saddleback Cove / P.O. Box 1088
 Travelers Rest, SC 29690

Model No.
PG-1WSAV-06

Item No.

Travelers Rest, SC: 800-476-4103 • Simi Valley, CA: 800-423-0150 • Fax: 864-834-3518 • www.tsbrass.com

ITEM NO.	SALES NO.	DESCRIPTION
1	PG-35AV-CH05	Spray Valve w/ 9' of Coiled Hose
2	PG-35AV	Aluminum 35° Spray Valve
3	010476-45	#27 Washer
4	B-0166	Wall Hook
5	034A	Swivel Adapter, 90°
6	B-0412	Rigid to Swivel Adapter
7	B-0970-FE	3/8" NPT Vacuum Breaker
8	002535-25	3/8" Close Nipple
9	000922-45	Lever Handle Screw
10	001660-45	Blue Index-CW
11	002521-45	4-Arm Handle
12	005960-40	Eterna Cartridge, RTC
13	001638-45	Lever Handle
14	B-0155-LN	Add-On Faucet
15	005960-40QT	1/4 Turn Eterna Cartridge, RTC
16	B-PT	Stream Regulator Outlet
17	001048-45	Nozzle Tip Washer
18	059X	6" Swing Nozzle



Product Specifications:
 Pet Grooming Unit:
 Single Hole Wall Mount Faucet, Eterna Cartridge w/ Spring Check,
 Add-On Faucet w/ 6" Swing Nozzle, Vacuum Breaker, 9 Ft Coiled Hose,
 & Angled Aluminum Spray Valve

Drawn KJG	Checked DMH	Approved JHB
Scale: NTS		Date: 09/19/13