



# T&S BRASS AND BRONZE WORKS, INC.

2 Saddleback Cove / P.O. Box 1088  
Travelers Rest, SC 29690

Model No.

**PG-2347-WH4-VH**

Item No.

Travelers Rest, SC: 800-476-4103 • Simi Valley, CA: 800-423-0150 • Fax: 864-834-3518 • www.tsbrass.com

## EPAct2005 Non-Compliant

This Space for Architect/Engineer Approval

Job Name \_\_\_\_\_ Date \_\_\_\_\_

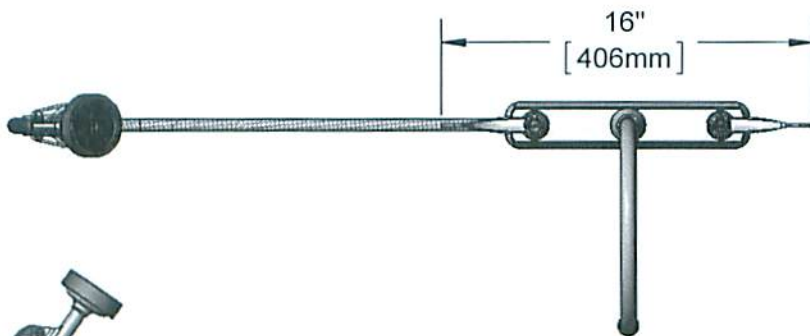
Model Specified \_\_\_\_\_ Quantity \_\_\_\_\_

Customer/Wholesaler \_\_\_\_\_

Contractor \_\_\_\_\_

Architect/Engineer \_\_\_\_\_

**CONTROLLED COPY**  
DEC 2012



Blue Lightweight Aluminum  
Spray Valve w/ Angled  
Spray Face

Chrome Escutcheon  
10 1/2" x 2" x 1"  
[267mm x 51mm x 25mm]

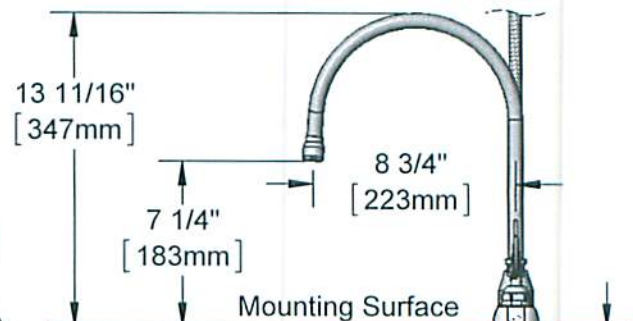
B-KF  
Deck Mount Flange

4 11/16"  
[119mm]

1/8"  
[3mm]  
Maximum  
Thickness

8"  
[203mm]

7' Vinyl Hose



4" Wrist Action  
Handles w/  
Color Coded Indexes

1/2" NPT  
Male Inlets

1 1/16"  
[27mm]

(2) 150A  
Optional Tailpiece & Nut  
For 1/4" NPT Connection  
(Included)

### Rough-In Requirement:

Faucet: (3) Ø 1" [25mm] Mounting Holes

Deck Flange: (1) Ø 1 9/16" Mounting Hole

### Product Specifications:

8" Deck Mount Mixing Faucet, Swivel Gooseneck w/ Stream  
Regulator Outlet, 4" Wrist Action Handles, 7' Vinyl Hose  
w/ Lightweight Aluminum Spray Valve, Deck Mount Flange  
& 1/2" NPT Male Inlets

Drawn

**DHL**

Checked

**DMH**

Approved

**JHB**

Scale:

**1:8**

Date:

**12/20/12**

Sheet: 1 of 2



# T&S BRASS AND BRONZE WORKS, INC.

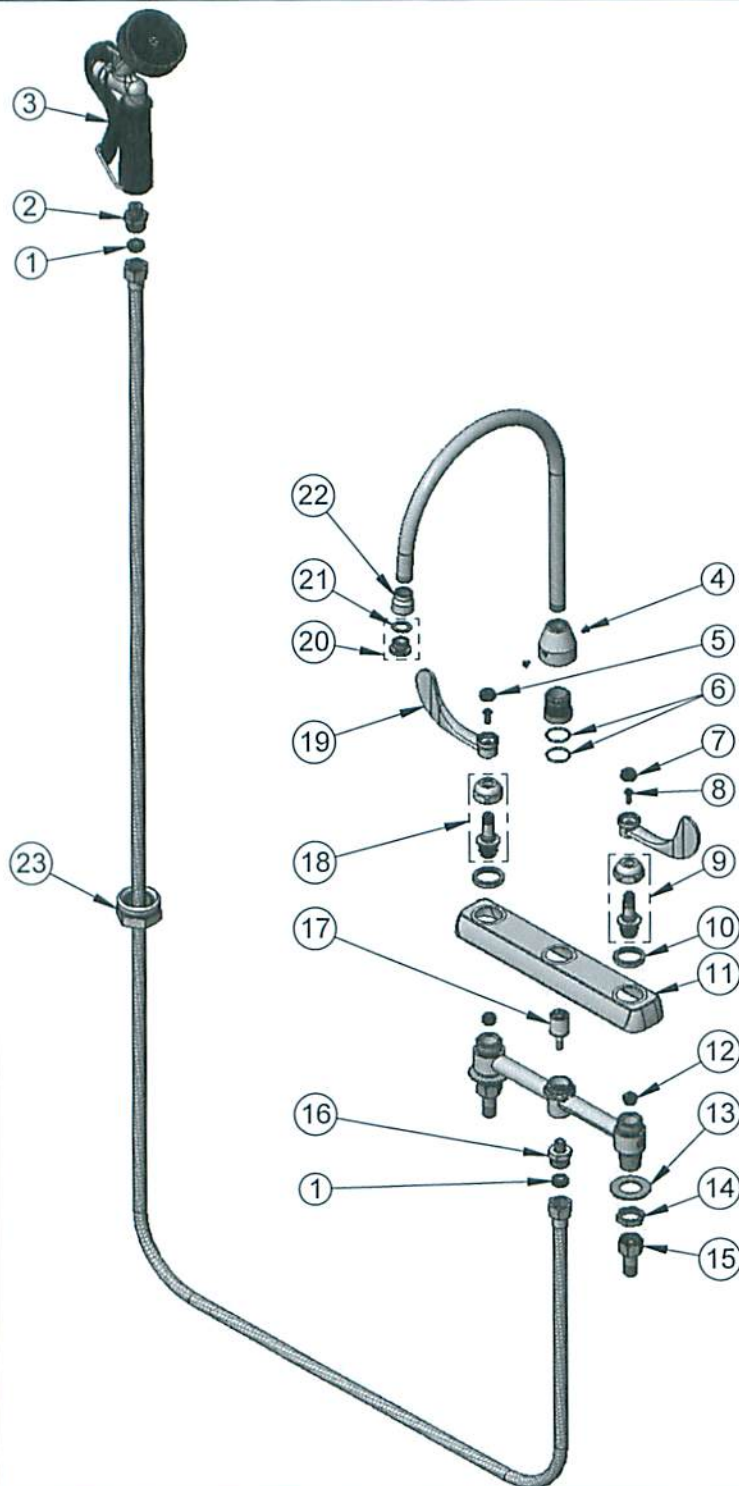
2 Saddleback Cove / P.O. Box 1088  
Travelers Rest, SC 29690

Model No.

**PG-2347-WH4-VH**

Item No.

Travelers Rest, SC: 800-476-4103 • Simi Valley, CA: 800-423-0150 • Fax: 864-834-3518 • www.tsbrass.com



ITEM NO.	SALES NO.	DESCRIPTION
1	010476-45	#27 Washer
2	002584-25	1/4" NPT x 3/4-14 Male Adapter
3	PG-35AV	Blue Lightweight Aluminum Spray Valve w/ Angled Spray Face
4	001486-45	Diverter Cover Screw
5	001194-45	Red HW Index
6	001069-45	O-ring
7	001686-45	Blue CW Index
8	000925-45	Lab Handle Screw
9	009424-40	B-2346 Spindle Assembly, LTC (Teflon)
10	000712-25	Escutcheon Lock Nut
11	001259-40	Escutcheon
12	000763-20	Seat
13	000999-45	Brass Lock Washer
14	002954-45	Shank Lock Nut
15	000958-20	Coupling Nut
16	000542-25	1/8" NPT x 3/4-14 Male Adapter
17	002338-45	Valve Diverter Piston
18	009423-40	B-2346 Spindle Assembly, RTC (Teflon)
19	B-WH4	4" Wrist Action Handle
20	B-LT	Stream Regulator Outlet
21	001043-45	Washer
22	000557-25	Adapter Bell, 5/8-27 X 3/8
23	B-KF	Protective Flange For Deck Mounted Spray Hoses

CONTROLLED COPY  
DEL 6/12

## Product Specifications:

8" Deck Mount Mixing Faucet, Swivel Gooseneck w/ Stream Regulator Outlet, 4" Wrist Action Handles, 7' Vinyl Hose w/ Lightweight Aluminum Spray Valve, Deck Mount Flange & 1/2" NPT Male Inlets

Drawn

DHL

Checked

DMH

Approved

JHB

Scale:

NTS

Date:

12/20/12

Sheet: 2 of 2