



**T&S BRASS AND BRONZE WORKS, INC.**  
 2 Saddleback Cove / P.O. Box 1088  
 Travelers Rest, SC 29690

Model No.  
**MPZ-8DLN-06**

Item No.

Travelers Rest, SC: 800-476-4103 • Simi Valley, CA: 800-423-0150 • Fax: 864-834-3518 • www.tsbrass.com

This Space for Architect/Engineer Approval

Job Name \_\_\_\_\_ Date \_\_\_\_\_

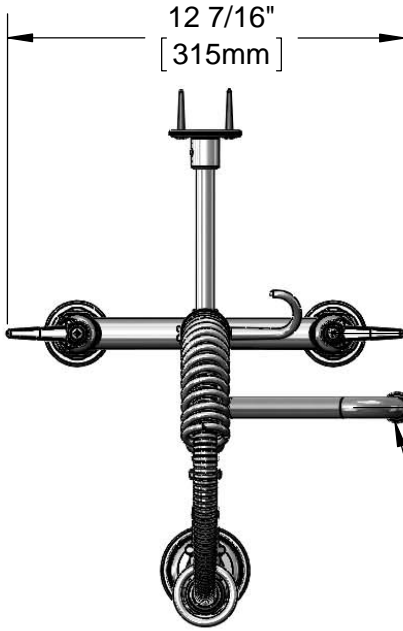
Model Specified \_\_\_\_\_ Quantity \_\_\_\_\_

Customer/Wholesaler \_\_\_\_\_

Contractor \_\_\_\_\_

Architect/Engineer \_\_\_\_\_

EPA Act 2005 Compliant  
 For Commercial Use Only



2 5/16"  
 [59mm]

059X  
 6" Swing Nozzle w/  
 Stream Regulator Outlet

24" Flexible Stainless  
 Steel Hose w/ Spring  
 & Spray Valve

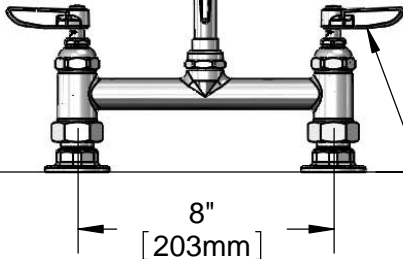
Items Not Shown  
 For Clarity

3/8" NPT x 8" Riser  
 B-0107  
 1.42 GPM  
 Spray Valve

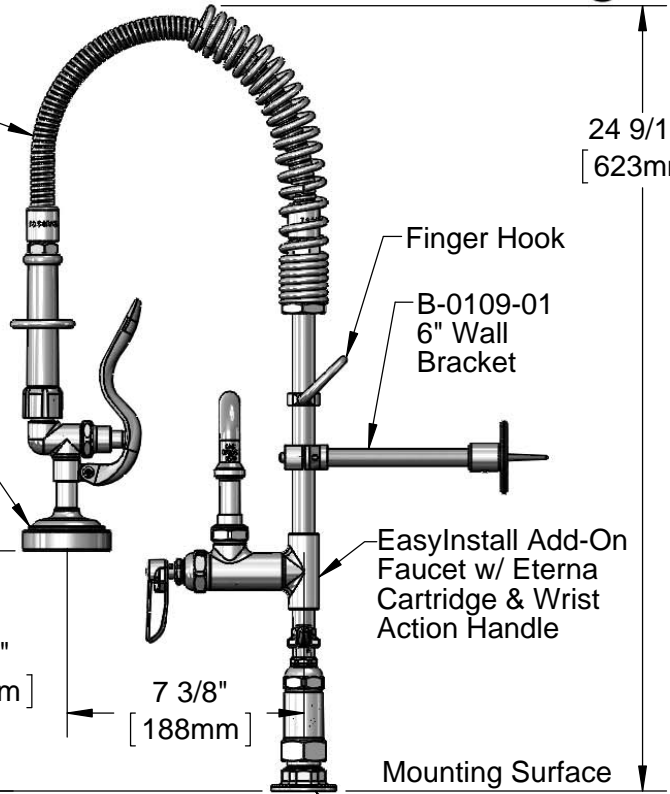
12 1/2"  
 [317mm]

9 3/4"  
 [248mm]

Eterna Cartridges w/  
 Spring Checks &  
 Lever Handles w/  
 Color Coded Indexes



Adjustable From  
 7 3/4" to 8 1/4"  
 [197mm to 210mm]



Finger Hook

B-0109-01  
 6" Wall  
 Bracket

EasyInstall Add-On  
 Faucet w/ Eterna  
 Cartridge & Wrist  
 Action Handle

Mounting Surface

Ø 2" [51mm]  
 Flanges w/  
 1/2" NPT  
 Female Inlets

24 9/16"  
 [623mm]

Product Specifications:

Easy Install Pre-Rinse Unit:  
 8" Deck Mount Mixing Faucet, Eterna Cartridges w/ Spring Checks,  
 Lever Handles, Add-On Faucet w/ 6" Swing Nozzle, Compact Spring,  
 24" Flexible Stainless Steel Hose, 1.42 GPM Spray Valve, 6" Wall  
 Bracket & 1/2" NPT Female Inlets

Drawn <b>KJG</b>	Checked <b>DMH</b>	Approved <b>JHB</b>
Scale: <b>1:6</b>	Date: <b>09/19/13</b>	



# T&S BRASS AND BRONZE WORKS, INC.

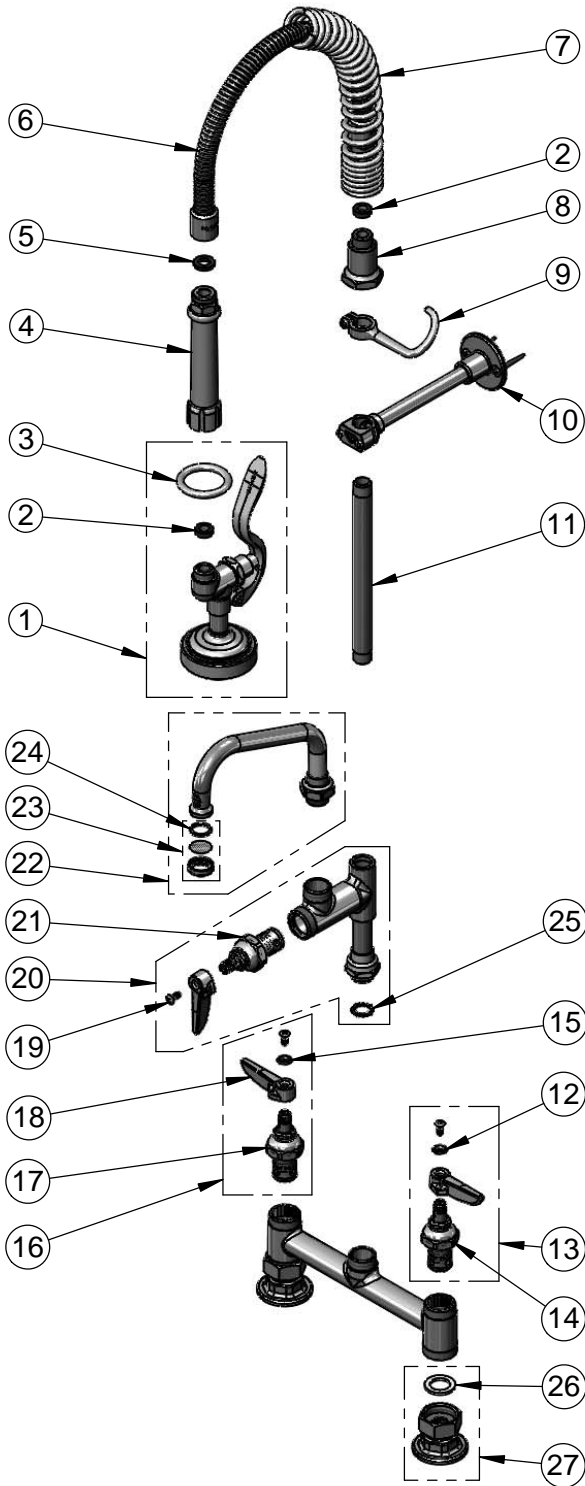
2 Saddleback Cove / P.O. Box 1088  
Travelers Rest, SC 29690

Model No.

**MPZ-8DLN-06**

Item No.

Travelers Rest, SC: 800-476-4103 • Simi Valley, CA: 800-423-0150 • Fax: 864-834-3518 • www.tsbrass.com



ITEM NO.	SALES NO.	DESCRIPTION
1	B-0107	1.42 GPM Spray Valve
2	010476-45	#27 Washer
3	000907-45	Spray Valve Hold Down Ring
4	002987-40	Grip Handle
5	001014-45	Washer, B-0100 Hose Barrel
6	B-0024-H2A	24" Stainless Steel Flex Hose - Less Handle
7	016795-45	Compact Spring
8	000821-40	Spring Body
9	004R	Finger Hook
10	B-0109-01	6" Wall Bracket
11	078X	3/8" NPT x 8" Riser
12	001660-45	Blue Index-CW
13	002711-40	Eterna Cartridge, LTC w/ Spring Check, Handle, Index & Screw
14	012442-40	Eterna Cartridge, LTC w/ Spring Check
15	001661-45	Red Index-HW
16	002712-40	Eterna Cartridge, RTC w/ Spring Check, Handle, Index & Screw
17	012443-40	Eterna Cartridge, RTC w/ Spring Check
18	001638-45	Lever Handle
19	000922-45	Lever Handle Screw
20	B-0155-LNEZ	Add-On 1/4 Turn Faucet
21	005960-40QT	1/4 Turn Eterna Cartridge, RTC
22	059X	6" Swing Nozzle
23	B-PT	Stream Regulator Outlet
24	001048-45	Nozzle Tip Washer
25	014200-45	SWasher, Anti-Rotation
26	001019-45	Coupling Nut Washer
27	00AA	1/2" NPT Female Eccentric Flange

**Product Specifications:**

Easy Install Pre-Rinse Unit:  
8" Deck Mount Mixing Faucet, Eterna Cartridges w/ Spring Checks,  
Lever Handles, Add-On Faucet w/ 6" Swing Nozzle, Compact Spring,  
24" Flexible Stainless Steel Hose, 1.42 GPM Spray Valve, 6" Wall  
Bracket & 1/2" NPT Female Inlets

Drawn

**KJG**

Checked

**DMH**

Approved

**JHB**

Scale:

**NTS**

Date:

**09/19/13**