



# T&S BRASS AND BRONZE WORKS, INC.

2 Saddleback Cove / P.O. Box 1088  
Travelers Rest, SC 29690

Model No.

**EC-3122-HG**

Item No.

Travelers Rest, SC: 800-476-4103 • Simi Valley, CA: 800-423-0150 • Fax: 864-834-3518 • www.tsbrass.com



**ADA Compliant**



This Space for Architect/Engineer Approval

Job Name \_\_\_\_\_ Date \_\_\_\_\_

Model Specified \_\_\_\_\_ Quantity \_\_\_\_\_

Customer/Wholesaler \_\_\_\_\_

Contractor \_\_\_\_\_

Architect/Engineer \_\_\_\_\_

Ø 2 9/16"  
[65mm]

Optional DC Power  
w/ 4 "AA" Batteries  
Inside Housing

Internal Above  
Deck Electronics  
w/ Flow Control  
Setting Switches

19" [486mm] Flexible  
Stainless Steel Supply  
Hoses w/ 1/2" Swivel  
Ends & Filter Washers

Connection to  
Power Supply

100-240 VAC Adapter  
w/ 71" [1800mm] Power  
Cord

Temperature  
Mixing Handle

Mounting  
Surface

2.2 GPM [8.3 L/min]  
Vandal Resistant  
Aerator

5 3/4"  
[146mm]

4 5/16"  
[109mm]

Cold

Hot

8 5/16"  
[211mm]

1 1/2"  
[38mm]  
Maximum  
Thickness

Check Valve Adapters  
w/ 3/8" Compression  
(9/16-24 UN) Inlets &  
Check Valves

Hydro-Generator  
Power Supply.  
No "AA" Batteries or  
AC Adapter Needed  
to Supply Power to  
Faucet

Connect Cold Supply Line  
Check Valve Adapter to  
Hydro-Generator  
1/2" NPSM Swivel

Rough-In Requirement:  
Ø 1 1/2" [38mm] Mounting Hole

### Product Specifications:

Chrome Plated Brass Above Deck Electronics Faucet, Single Hole Deck Mount, 2.2 GPM VR Aerator, Above Deck Temperature Control, Hydro-Generator Powered, 19" Stainless Steel Flexible Supply Hoses & 3/8" Compression Inlets

### Product Compliance:

ASME A112.18.1 / CSA B125.1  
NSF 61 - Section 9  
NSF 372 (Low Lead Content)  
ANSI A117.1 (ADA)  
UL 1951



# T&S BRASS AND BRONZE WORKS, INC.

2 Saddleback Cove / P.O. Box 1088  
Travelers Rest, SC 29690

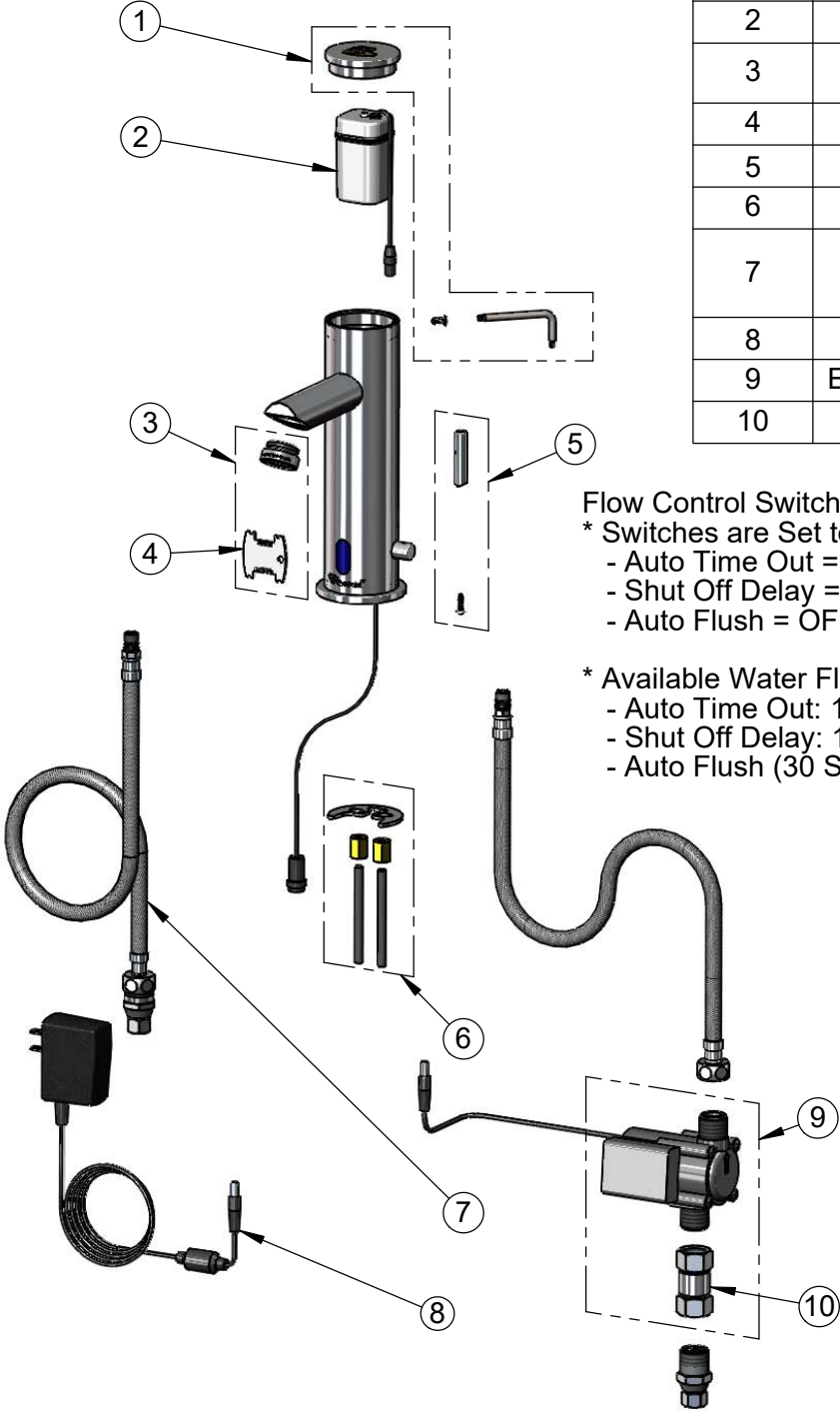
Model No.

**EC-3122-HG**

Item No.

Travelers Rest, SC: 800-476-4103 • Simi Valley, CA: 800-423-0150 • Fax: 864-834-3518 • www.tsbrass.com

ITEM NO.	SALES NO.	DESCRIPTION
1	018160-40	Cap, Screw & Wrench Kit
2	018227-45	Battery Holder
3	B-0199-09	VR 2.2 GPM Aerator, 15/16-27 UN Male w/ Key
4	015425-45	Vandal Resistant Key
5	018230-45	Lever Handle w/ Screw
6	018233-45	Mounting Hardware Kit
7	018232-45	Flexible Stainless Steel Hose w/ Filter Washer & Check Valve Adapter Asm.
8	5EF-0002	AC Transformer
9	EC-HYDROGEN	HydroGenerator Power Supply
10	017506-45	1/2" NPSM Swivel Coupling



Flow Control Switches are Located Beneath the Cap.

\* Switches are Set to DEFAULT Position:

- Auto Time Out = 15 Seconds
- Shut Off Delay = 1 Second
- Auto Flush = OFF

\* Available Water Flow Control Selections:

- Auto Time Out: 15 sec, 30 sec, 45 sec, 60 sec, 3 min, 20 min
- Shut Off Delay: 1 sec, 10 sec, 15 sec, 30 sec
- Auto Flush (30 Seconds After Every 12 Inactive Hours): ON or OFF

**Product Specifications:**

Chrome Plated Brass Above Deck Electronics Faucet, Single Hole Deck Mount, 2.2 GPM VR Aerator, Above Deck Temperature Control, Hydro-Generator Powered, 19" Stainless Steel Flexible Supply Hoses & 3/8" Compression Inlets

**Product Compliance:**

ASME A112.18.1 / CSA B125.1  
NSF 61 - Section 9  
NSF 372 (Low Lead Content)  
ANSI A117.1 (ADA)  
UL 1951