

**T&S BRASS AND BRONZE WORKS, INC.**  
 2 Saddleback Cove / P.O. Box 1088  
 Travelers Rest, SC 29690

Model No.

**BL-9506-01**

Item No.

Travelers Rest, SC: 800-476-4103 • Simi Valley, CA: 800-423-0150 • Fax: 864-834-3518 • www.tsbrass.com

This Space for Architect/Engineer Approval

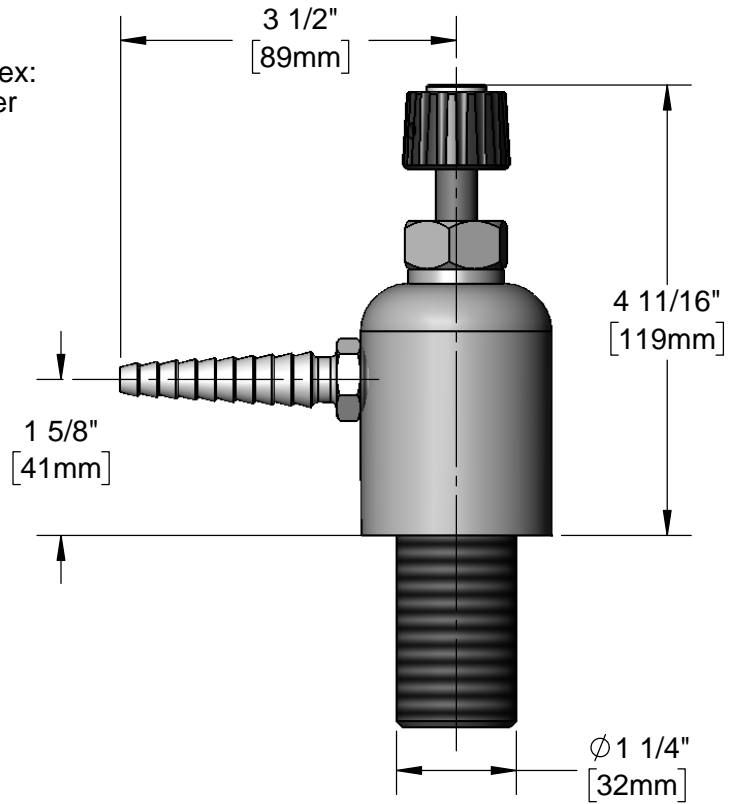
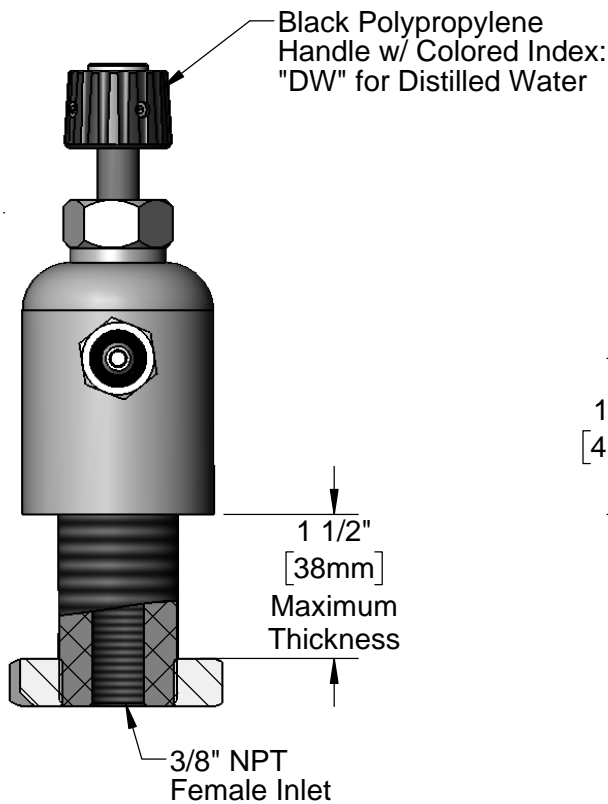
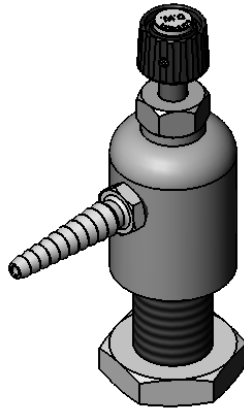
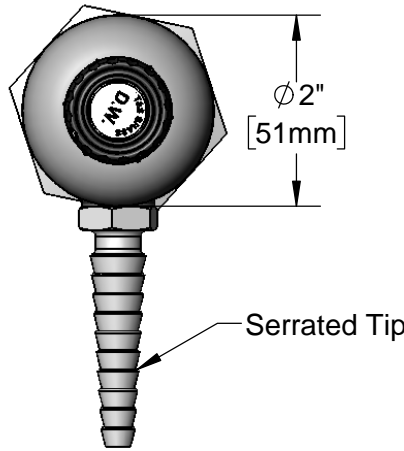
Job Name \_\_\_\_\_ Date \_\_\_\_\_

Model Specified \_\_\_\_\_ Quantity \_\_\_\_\_

Customer/Wholesaler \_\_\_\_\_

Contractor \_\_\_\_\_

Architect/Engineer \_\_\_\_\_

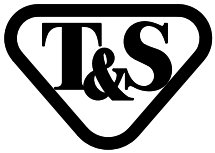


Product Specifications:

Single Hole Deck Mount Gray PVC Ledge Faucet w/ Serrated Tip Outlet &  $\frac{3}{8}"$  NPT Female Inlet for Distilled or Deionized Water Applications

Product Compliance:

ASME A112.18.1 / CSA B125.1  
 NSF 61 - Section 9  
 NSF 372 (Low Lead Content)

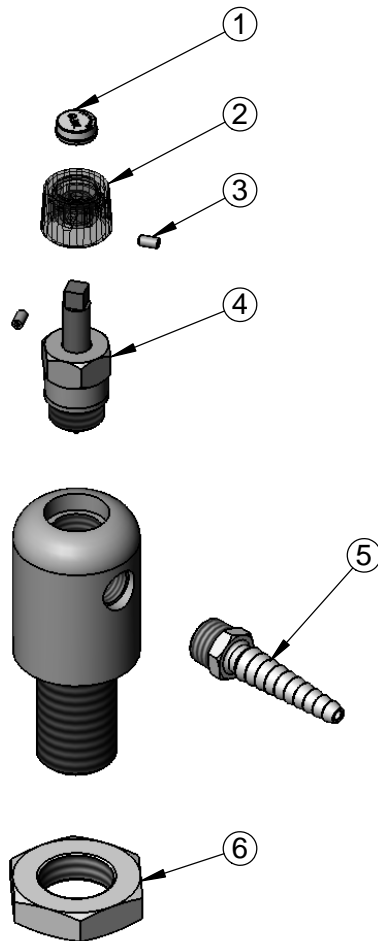


**T&S BRASS AND BRONZE WORKS, INC.**  
 2 Saddleback Cove / P.O. Box 1088  
 Travelers Rest, SC 29690

Model No.  
**BL-9506-01**  
 Item No.

Travelers Rest, SC: 800-476-4103 • Simi Valley, CA: 800-423-0150 • Fax: 864-834-3518 • www.tsbrass.com

ITEM NO.	SALES NO.	DESCRIPTION
1	001206-45	Index, Snapin White "DW"
2	001492-20	Knob, PVC
3	000938-45	Set Screw (1)
4	007549-40	Bonnet Assembly, PVC
5	BL-9540-06	Serrated Tip w/ Washer
6	000512-20	Nut, PVC Lock



Product Specifications:  
 Single Hole Deck Mount Gray PVC Ledge Faucet w/ Serrated Tip Outlet & 3/8" NPT Female Inlet for Distilled or Deionized Water Applications

Product Compliance:  
 ASME A112.18.1 / CSA B125.1  
 NSF 61 - Section 9  
 NSF 372 (Low Lead Content)