



T&S BRASS AND BRONZE WORKS, INC.

2 Saddleback Cove / P.O. Box 1088
Travelers Rest, SC 29690

Model No.

BL-5725-09

Item No.

Travelers Rest, SC: 800-476-4103 • Simi Valley, CA: 800-423-0150 • Fax: 864-834-3518 • www.tsbrass.com



ADA Compliant

This Space for Architect/Engineer Approval

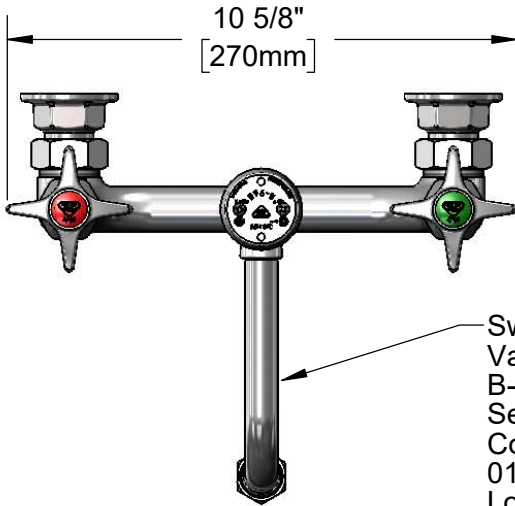
Job Name _____ Date _____

Model Specified _____ Quantity _____

Customer/Wholesaler _____

Contractor _____

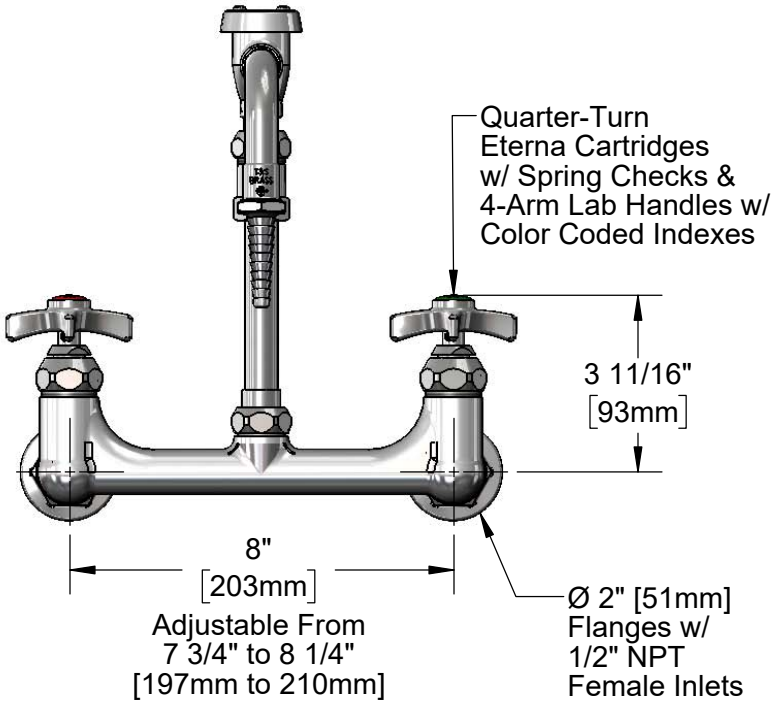
Architect/Engineer _____



Swing Nozzle w/
Vacuum Breaker &
B-0198
Serrated Tip Outlet.
Converts to Rigid w/
014200-45
Lock Washer (Included).



B-0968
3/8" NPT
Vacuum
Breaker

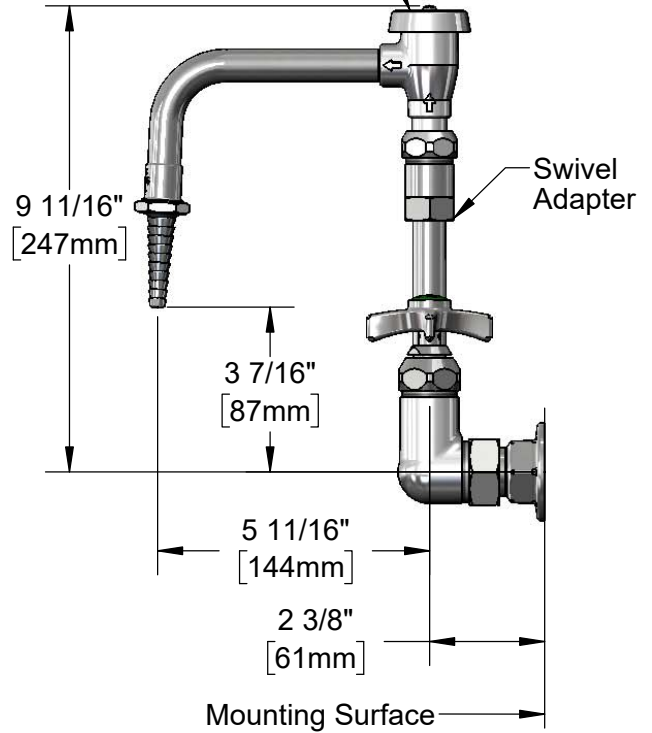


Quarter-Turn
Eterna Cartridges
w/ Spring Checks &
4-Arm Lab Handles w/
Color Coded Indexes

3 11/16"
[93mm]

Adjustable From
7 3/4" to 8 1/4"
[197mm to 210mm]

Ø 2" [51mm]
Flanges w/
1/2" NPT
Female Inlets



9 11/16"
[247mm]

3 7/16"
[87mm]

5 11/16"
[144mm]

2 3/8"
[61mm]

Mounting Surface

Product Specifications:

8" Wall Mount Laboratory Mixing Faucet, Quarter-Turn Eterna Cartridges w/ Spring Checks, 4-Arm Lab Handles, Swing Vacuum Breaker Nozzle, Swivel Adapter, Serrated Tip & 1/2" NPT Female Inlets

Product Compliance:

ASME A112.18.1 / CSA B125.1
NSF 61 - Section 9
NSF 372 (Low Lead Content)
ANSI A117.1 (ADA)
ASSE 1001 (VB)



T&S BRASS AND BRONZE WORKS, INC.

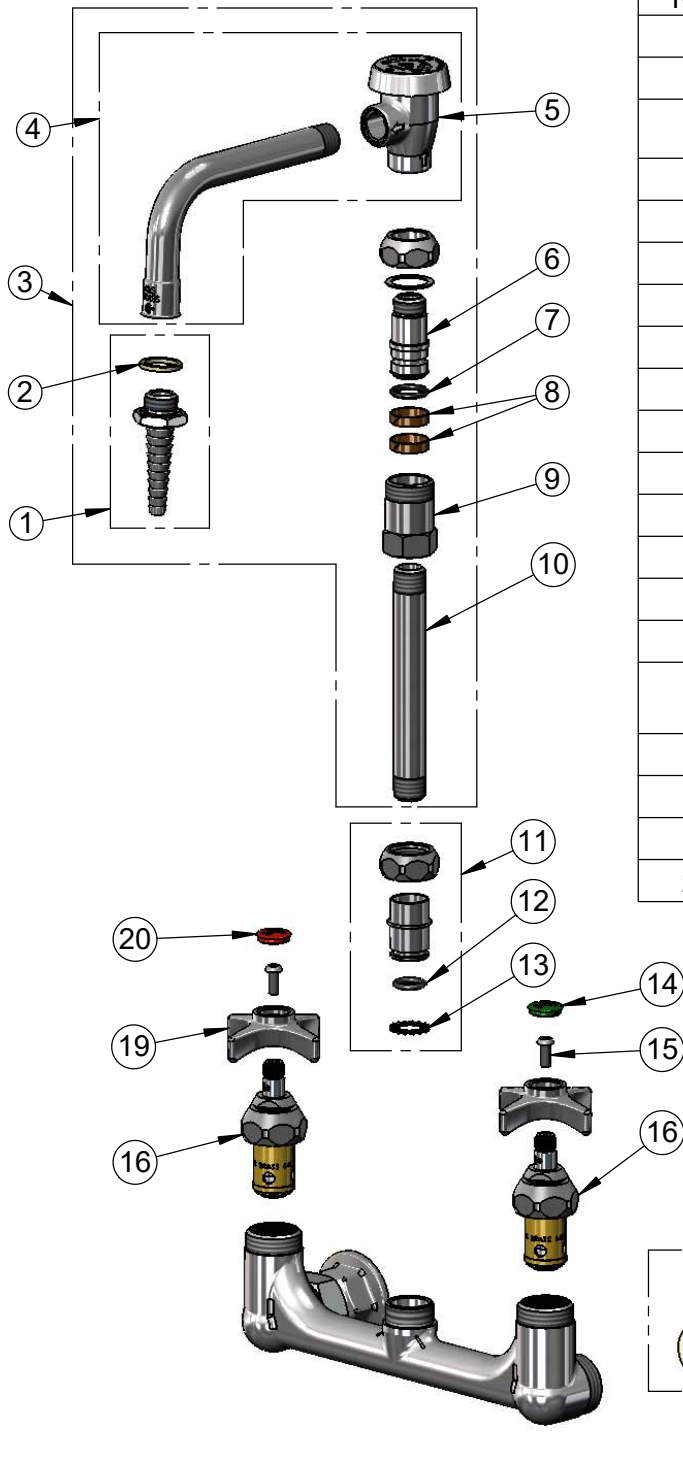
2 Saddleback Cove / P.O. Box 1088
Travelers Rest, SC 29690

Model No.

BL-5725-09

Item No.

Travelers Rest, SC: 800-476-4103 • Simi Valley, CA: 800-423-0150 • Fax: 864-834-3518 • www.tsbrass.com



ITEM NO.	SALES NO.	DESCRIPTION
1	B-0198	Serrated Tip Outlet, 3/8" NPT Male
2	001051-45	Washer
3	BL-5560-02	Swing Nozzle w/ Vacuum Breaker & 3/8" x 5" Nipple Inlet
4	007283-40	Vacuum Breaker Nozzle
5	B-0968	3/8" NPT Vacuum Breaker
6	000843-25	Swivel Body
7	001074-45	O-Ring
8	011429-45	Swivel Sleeves (2)
9	054X	Swivel Body
10	000361-40	Nipple, 3/8" NPT x 5"
11	EZ-K	EasyInstall Kit
12	006562-45	O-ring
13	014200-45	Star Washer, Anti-Rotation
14	001191-45NS	Green "CW" Lab Button Index
15	000925-45	Lab Handle Screw
16	012443-40NS	Quarter-Turn Eterna Cartridge w/ Spring Check, RTC
17	00AA	1/2" NPT Female Eccentric Flange
18	001019-45	Coupling Nut Washer
19	000059-40	4-Arm Lab Handle
20	019736-45	Red "HW" Lab Button Index

Product Specifications:

8" Wall Mount Laboratory Mixing Faucet, Quarter-Turn Eterna Cartridges w/ Spring Checks, 4-Arm Lab Handles, Swing Vacuum Breaker Nozzle, Swivel Adapter, Serrated Tip & 1/2" NPT Female Inlets

Product Compliance:

ASME A112.18.1 / CSA B125.1
NSF 61 - Section 9
NSF 372 (Low Lead Content)
ANSI A117.1 (ADA)
ASSE 1001 (VB)