



**T&S BRASS AND BRONZE WORKS, INC.**  
 2 Saddleback Cove / P.O. Box 1088  
 Travelers Rest, SC 29690

Model No.  
**BL-5715-09**

Item No.

Travelers Rest, SC: 800-476-4103 • Simi Valley, CA: 800-423-0150 • Fax: 864-834-3518 • www.tsbrass.com



**ADA Compliant**

This Space for Architect/Engineer Approval

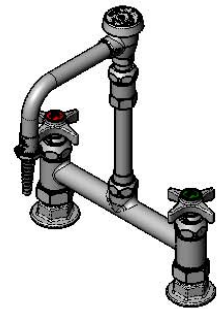
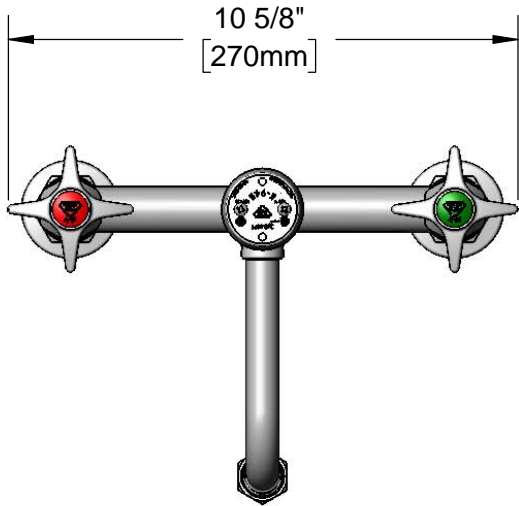
Job Name \_\_\_\_\_ Date \_\_\_\_\_

Model Specified \_\_\_\_\_ Quantity \_\_\_\_\_

Customer/Wholesaler \_\_\_\_\_

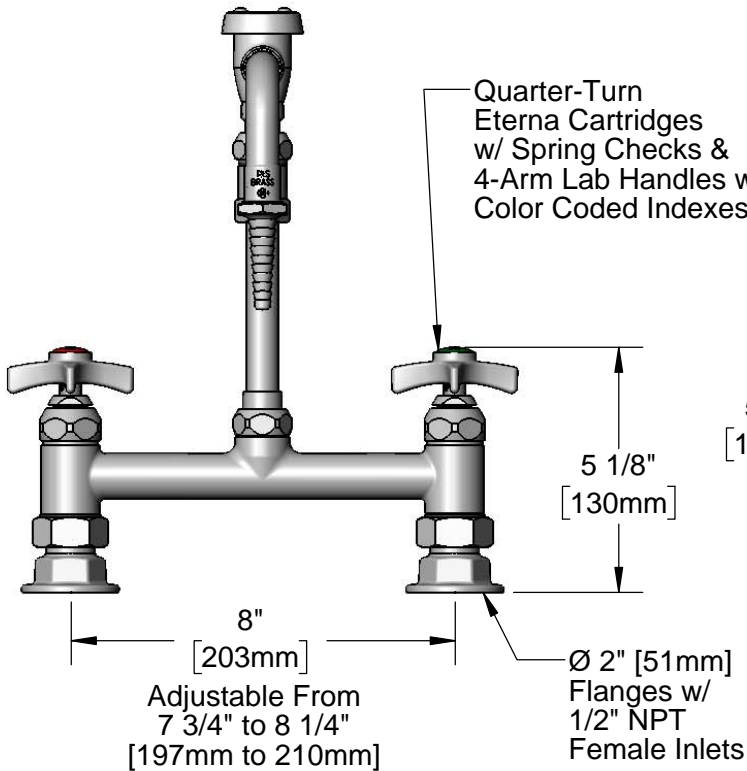
Contractor \_\_\_\_\_

Architect/Engineer \_\_\_\_\_

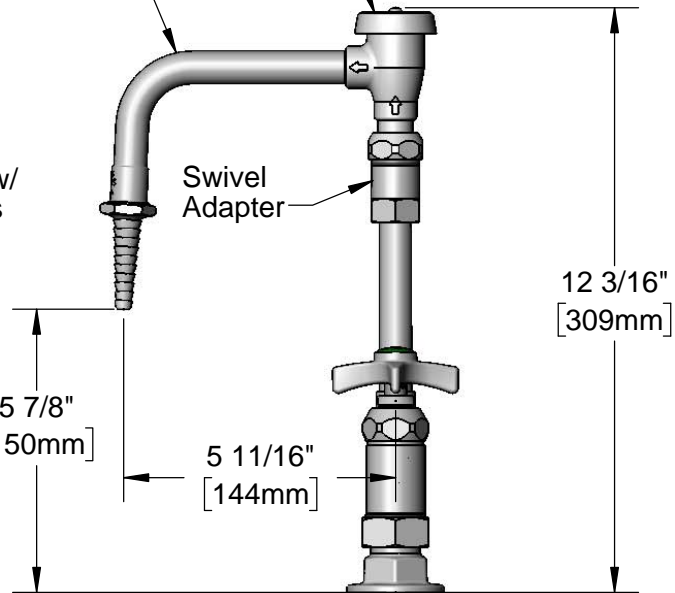


Swivel/Rigid Nozzle  
 w/ Vacuum Breaker  
 & B-0198  
 Serrated Tip Outlet

B-0968  
 3/8" NPT  
 Vacuum  
 Breaker



Quarter-Turn  
 Eterna Cartridges  
 w/ Spring Checks &  
 4-Arm Lab Handles w/  
 Color Coded Indexes



Swivel  
 Adapter

12 3/16"  
 [309mm]

5 7/8"  
 [150mm]

5 1/8"  
 [130mm]

5 11/16"  
 [144mm]

8"  
 [203mm]  
 Adjustable From  
 7 3/4" to 8 1/4"  
 [197mm to 210mm]

Ø 2" [51mm]  
 Flanges w/  
 1/2" NPT  
 Female Inlets

**Product Specifications:**

8" Deck Mount Laboratory Mixing Faucet, Quarter-Turn Eterna Cartridges, 4-Arm Lab Handles, Swivel/Rigid Vacuum Breaker Nozzle, Swivel Adapter, Serrated Tip Outlet & 1/2" NPT Female Inlets

**Product Compliance:**

ASME A112.18.1 / CSA B125.1  
 NSF 61 - Section 9  
 NSF 372 (Low Lead Content)  
 ANSI A117.1 (ADA)  
 ASSE 1001 (VB)



# T&S BRASS AND BRONZE WORKS, INC.

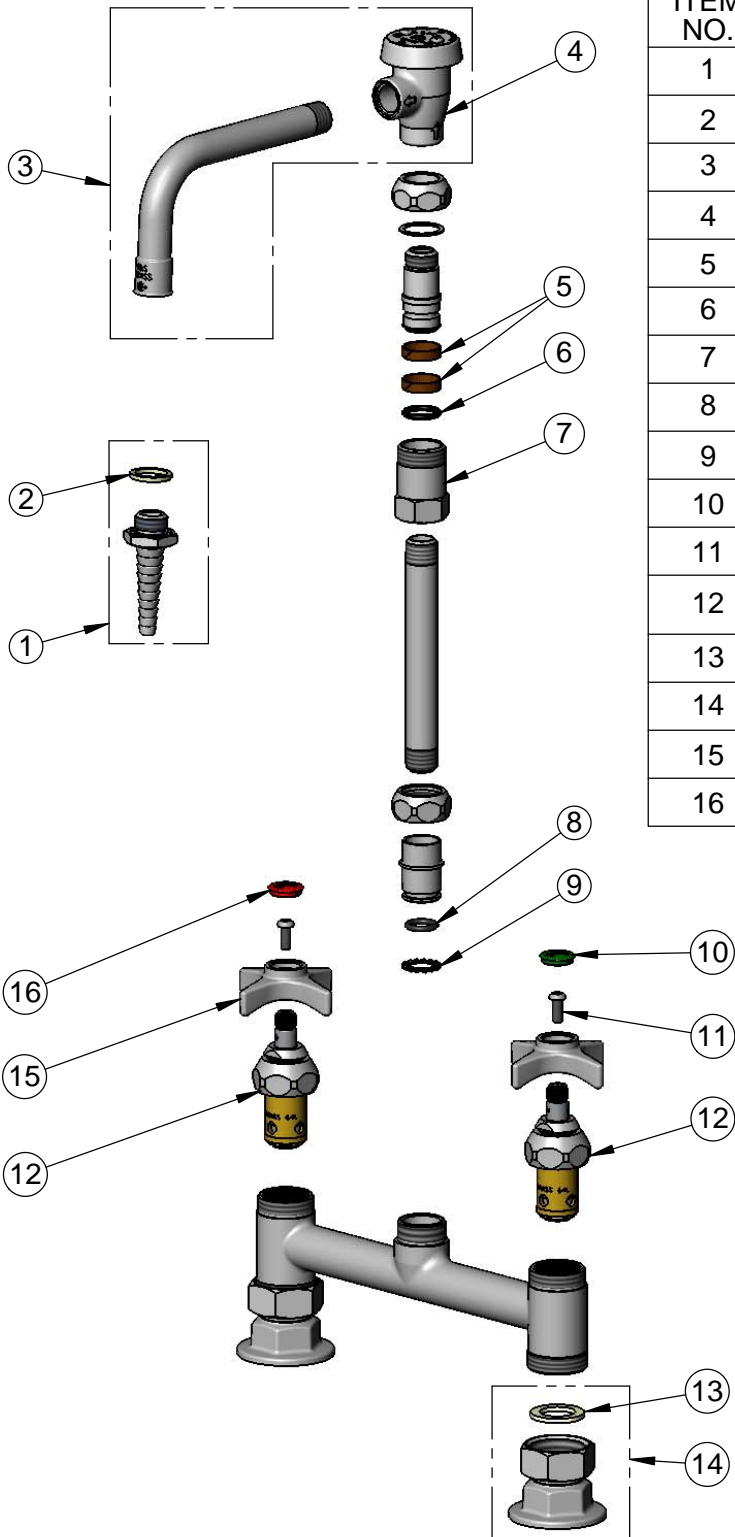
2 Saddleback Cove / P.O. Box 1088  
Travelers Rest, SC 29690

Model No.

**BL-5715-09**

Item No.

Travelers Rest, SC: 800-476-4103 • Simi Valley, CA: 800-423-0150 • Fax: 864-834-3518 • www.tsbrass.com



ITEM NO.	SALES NO.	DESCRIPTION
1	B-0198	Serrated Tip w/ Washer
2	001051-45	Washer
3	007283-40	Nozzle w/ Vacuum Breaker Only
4	B-0968	3/8" NPT Vacuum Breaker
5	011429-45	Swivel Sleeves (2)
6	001074-45	O-Ring
7	054X	Swivel Body
8	006562-45	O-ring
9	014200-45	Star Washer, Anti-Rotation
10	001191-45NS	Green "CW" Lab Button Index
11	000925-45	Lab Handle Screw
12	012443-40NS	Quarter-Turn Eterna Cartridge, RTC w/ Spring Check
13	001019-45	Coupling Nut Washer
14	00AA	1/2" NPT Female Eccentric Flange
15	000059-40	4-Arm Lab Handle
16	019736-45	Red "HW" Lab Button Index

**Product Specifications:**

8" Deck Mount Laboratory Mixing Faucet, Quarter-Turn Eterna Cartridges, 4-Arm Lab Handles, Swivel/Rigid Vacuum Breaker Nozzle, Swivel Adapter, Serrated Tip Outlet & 1/2" NPT Female Inlets

**Product Compliance:**

ASME A112.18.1 / CSA B125.1  
NSF 61 - Section 9  
NSF 372 (Low Lead Content)  
ANSI A117.1 (ADA)  
ASSE 1001 (VB)