



T&S BRASS AND BRONZE WORKS, INC.
 2 Saddleback Cove / P.O. Box 1088
 Travelers Rest, SC 29690

Model No.
BL-5709-08

Item No.

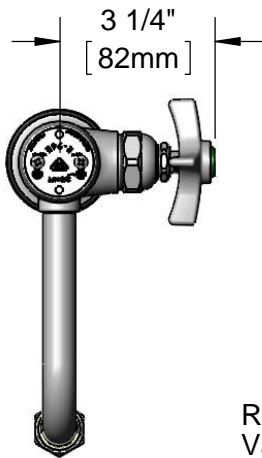
Travelers Rest, SC: 800-476-4103 • Simi Valley, CA: 800-423-0150 • Fax: 864-834-3518 • www.tsbrass.com



ADA Compliant

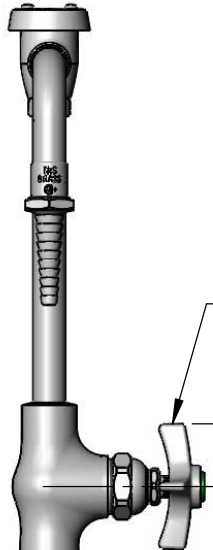
This Space for Architect/Engineer Approval

Job Name _____ Date _____
 Model Specified _____ Quantity _____
 Customer/Wholesaler _____
 Contractor _____
 Architect/Engineer _____

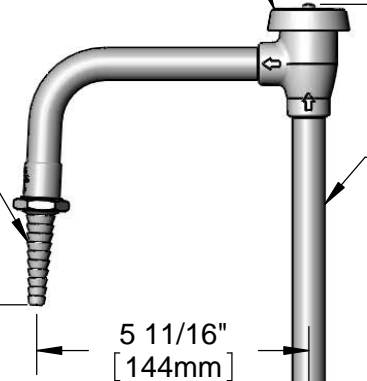


Rigid Nozzle w/
 Vacuum Breaker &
 B-0198
 Serrated Tip Outlet

B-0968
 3/8" NPT
 Vacuum Breaker



Eterna Cartridge &
 4-Arm Lab Handle w/
 Color Coded Index



3/8" NPT x 7"
 Riser

5 11/16"
 [144mm]

12 11/16"
 [323mm]

Mounting Surface

2 7/16"
 [61mm]

Deck Gasket

1/2" NPSM
 Male Inlet

1 9/16"
 [40mm]
 Maximum
 Thickness

150A
 Optional Tailpiece & Nut
 For 1/4" NPT Connection
 (Included)

Rough-In Requirement:
 Ø 1" [25mm] Mounting Hole

Product Specifications:

Single Hole Single Temperature Deck Mount Laboratory Faucet, Eterna Cartridge, 4-Arm Lab Handle, Rigid Vacuum Breaker Nozzle, Serrated Tip Outlet & 1/2" NPSM Male Inlet

Product Compliance:

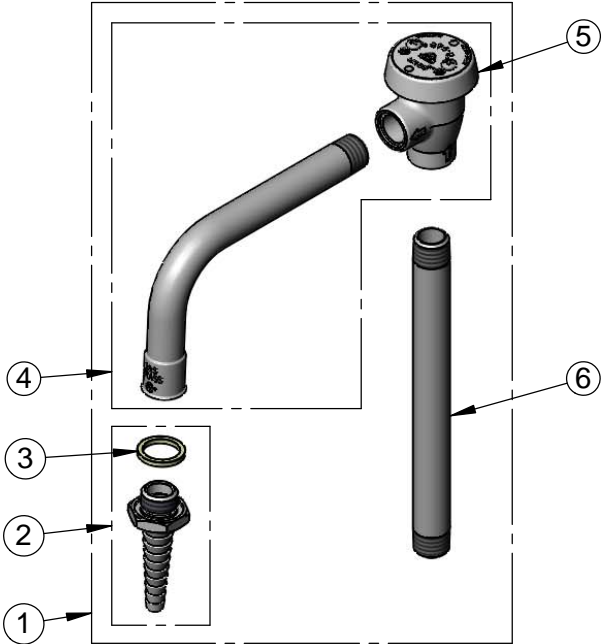
ASME A112.18.1 / CSA B125.1
 NSF 61 - Section 9
 NSF 372 (Low Lead Content)
 ANSI A117.1 (ADA)
 ASSE 1001 (VB)



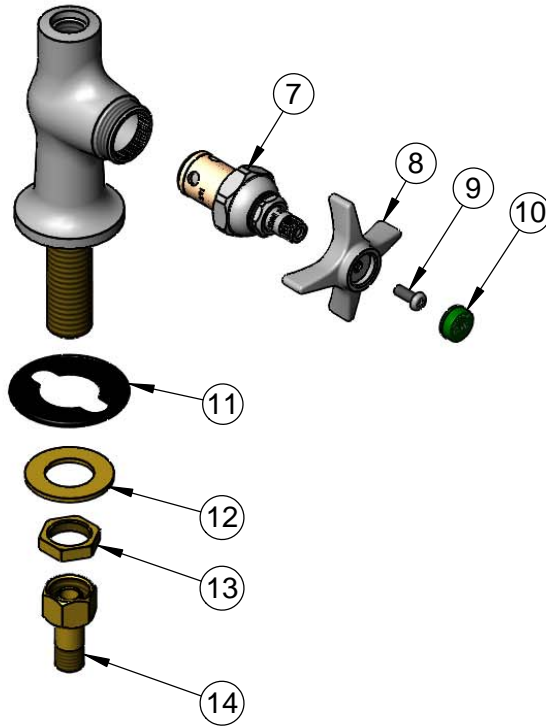
T&S BRASS AND BRONZE WORKS, INC.
 2 Saddleback Cove / P.O. Box 1088
 Travelers Rest, SC 29690

Model No.
BL-5709-08
 Item No.

Travelers Rest, SC: 800-476-4103 • Simi Valley, CA: 800-423-0150 • Fax: 864-834-3518 • www.tsbrass.com



| ITEM NO. | SALES NO. | DESCRIPTION |
|----------|------------|--|
| 1 | BL-5560-01 | Rigid Nozzle w/ Vacuum Breaker, Serrated Tip & 3/8" NPT x 7" Riser Inlet |
| 2 | B-0198 | Serrated Tip w/ Washer |
| 3 | 001051-45 | Washer |
| 4 | 007283-40 | Nozzle w/ Vacuum Breaker Only |
| 5 | B-0968 | 3/8" NPT Vacuum Breaker |
| 6 | 000363-40 | 3/8" NPT x 7" Riser |
| 7 | 005960-40 | Eterna Cartridge, RTC |
| 8 | 000059-40 | 4-Arm Lab Handle |
| 9 | 000925-45 | Lab Handle Screw |
| 10 | 001191-45 | Green Index - CW |
| 11 | 144L | Black Plastic Deck Gasket |
| 12 | 000999-45 | Brass Washer |
| 13 | 002954-45 | Shank Lock Nut |
| 14 | 150A | 1/4" NPT Tailpiece & Nut |



Product Specifications:
 Single Hole Single Temperature Deck Mount Laboratory Faucet, Eterna Cartridge, 4-Arm Lab Handle, Rigid Vacuum Breaker Nozzle, Serrated Tip Outlet & 1/2" NPSM Male Inlet

Product Compliance:
 ASME A112.18.1 / CSA B125.1
 NSF 61 - Section 9
 NSF 372 (Low Lead Content)
 ANSI A117.1 (ADA)
 ASSE 1001 (VB)