



**T&S BRASS AND BRONZE WORKS, INC.**  
 2 Saddleback Cove / P.O. Box 1088  
 Travelers Rest, SC 29690

Model No.  
**BL-4720-01AG**

Item No.

Travelers Rest, SC: 800-476-4103 • Simi Valley, CA: 800-423-0150 • Fax: 864-834-3518 • www.tsbrass.com



**ADA Compliant**

This Space for Architect/Engineer Approval

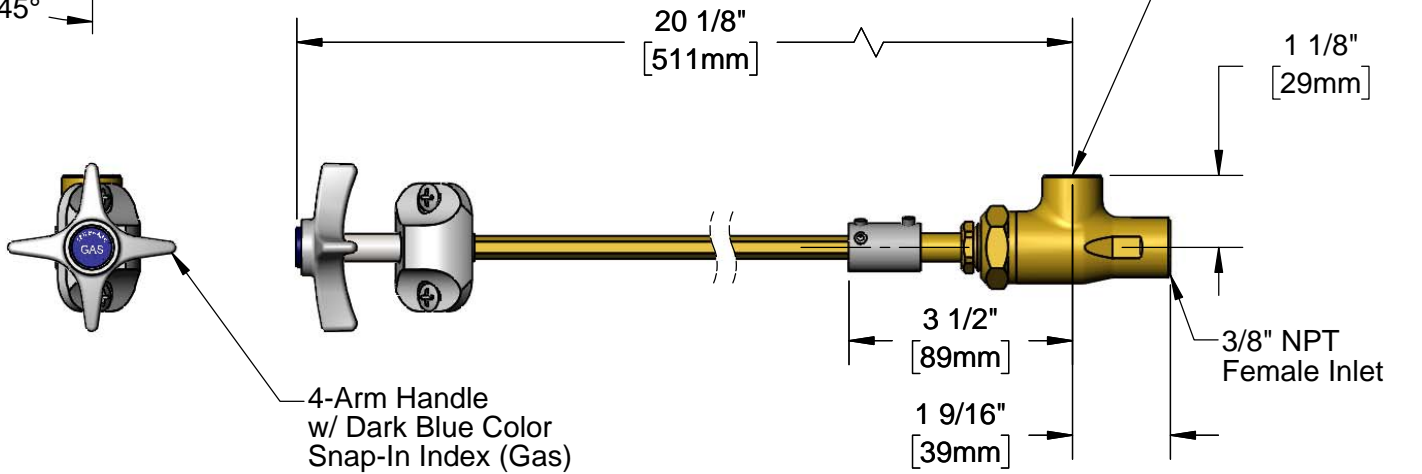
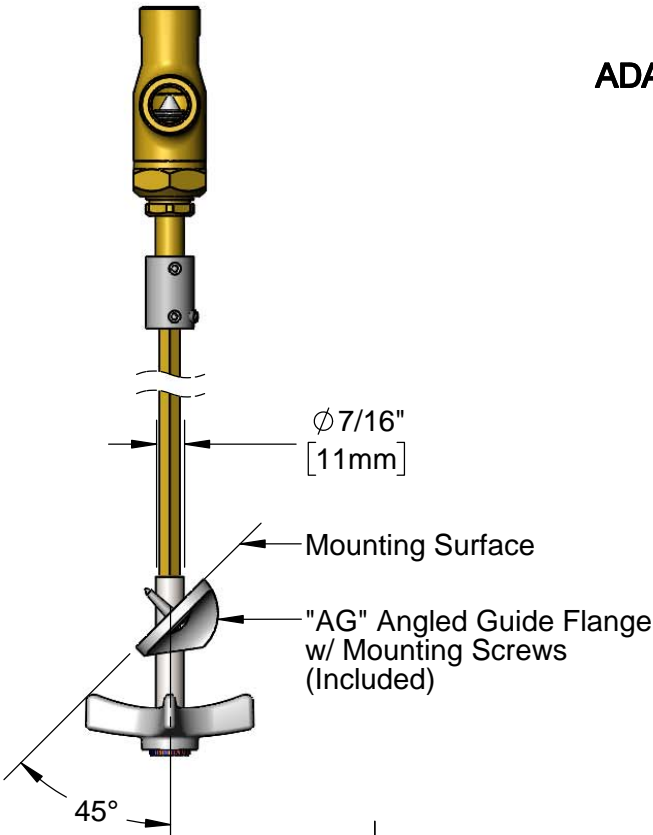
Job Name \_\_\_\_\_ Date \_\_\_\_\_

Model Specified \_\_\_\_\_ Quantity \_\_\_\_\_

Customer/Wholesaler \_\_\_\_\_

Contractor \_\_\_\_\_

Architect/Engineer \_\_\_\_\_



 209L-VAC Yellow Snap-In Index (Included)	 209L-AIR Orange Snap-In Index (Included)
--	--

Product Specifications:  
 Remote Control Angled Valve for Gases, 4-Arm Handle, "GAS", "AIR" & "VAC" Snap-In Indexes, Angled Guide Flange w/ Mounting Screws &  $3/8"$  NPT Inlet & Outlet

Product Compliance:  
 ANSI Z21.15a / CSA 9.1a (Gas Valves)



# T&S BRASS AND BRONZE WORKS, INC.

2 Saddleback Cove / P.O. Box 1088  
Travelers Rest, SC 29690

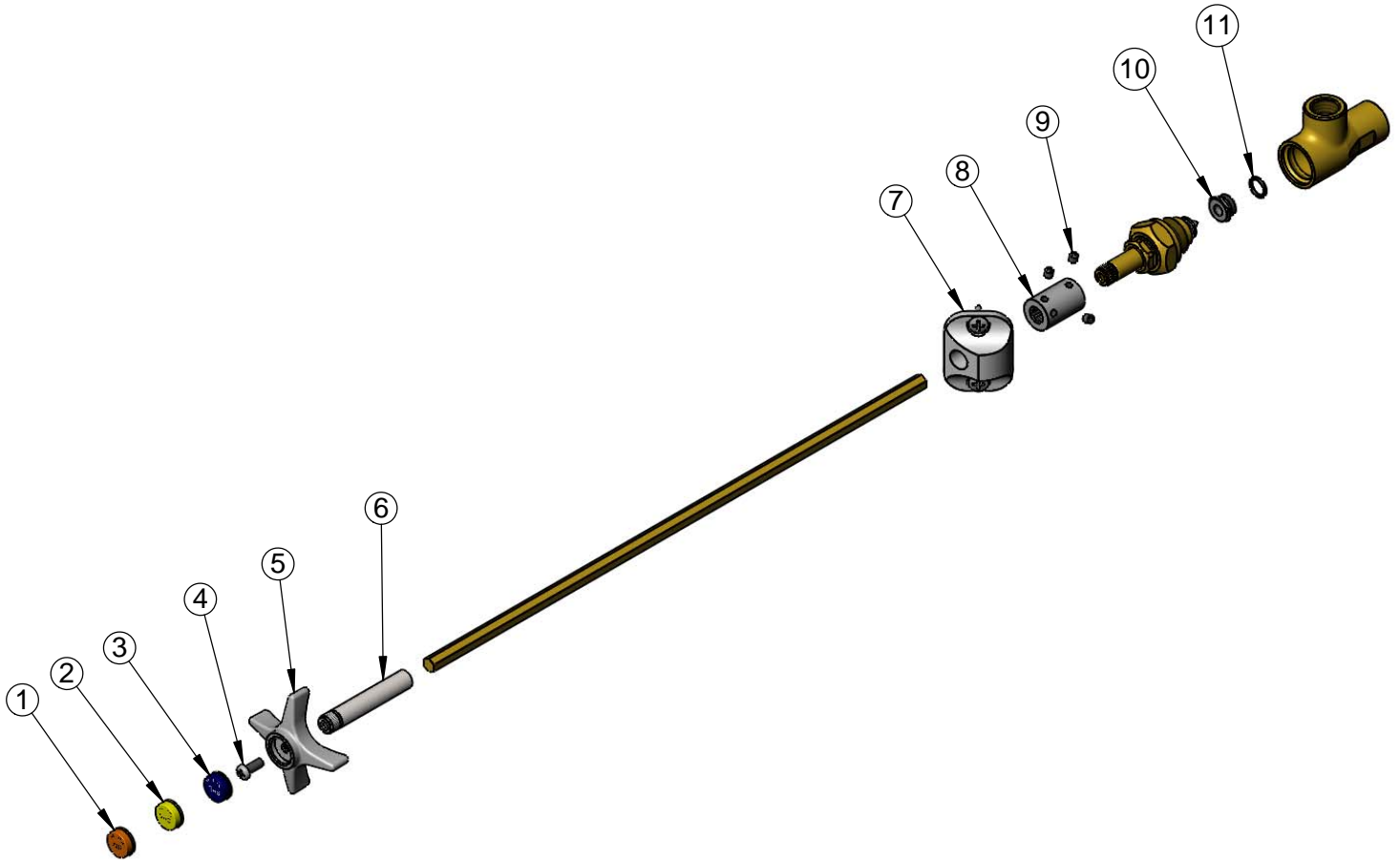
Model No.

**BL-4720-01AG**

Item No.

Travelers Rest, SC: 800-476-4103 • Simi Valley, CA: 800-423-0150 • Fax: 864-834-3518 • www.tsbrass.com

ITEM NO.	SALES NO.	DESCRIPTION
1	209L-AIR	Orange AIR Snap-In Index
2	209L-VAC	Yellow VAC Snap-In Index
3	209L-GAS	Dark Blue GAS Snap-In Index
4	000925-45	Lab Handle Screw
5	000059-40	4-Arm Lab Handle
6	000784-40	Broached Sleeve
7	BL-4740-03	45° Angled Guide Flange w/ Mounting Screws
8	000642-20	Coupling Remote
9	001584-45	Set Screw, 10-32 UN
10	000529-20	Seat
11	001070-45	O-ring



**Product Specifications:**

Remote Control Angled Valve for Gases, 4-Arm Handle, "GAS", "AIR" & "VAC" Snap-In Indexes, Angled Guide Flange w/ Mounting Screws & 3/8" NPT Inlet & Outlet

**Product Compliance:**

ANSI Z21.15a / CSA 9.1a (Gas Valves)