



T&S BRASS AND BRONZE WORKS, INC.
 2 Saddleback Cove / P.O. Box 1088
 Travelers Rest, SC 29690

Model No.
B-3507-VB

Item No.

Travelers Rest, SC: 800-476-4103 • Simi Valley, CA: 800-423-0150 • Fax: 864-834-3518 • www.tsbrass.com

This Space for Architect/Engineer Approval

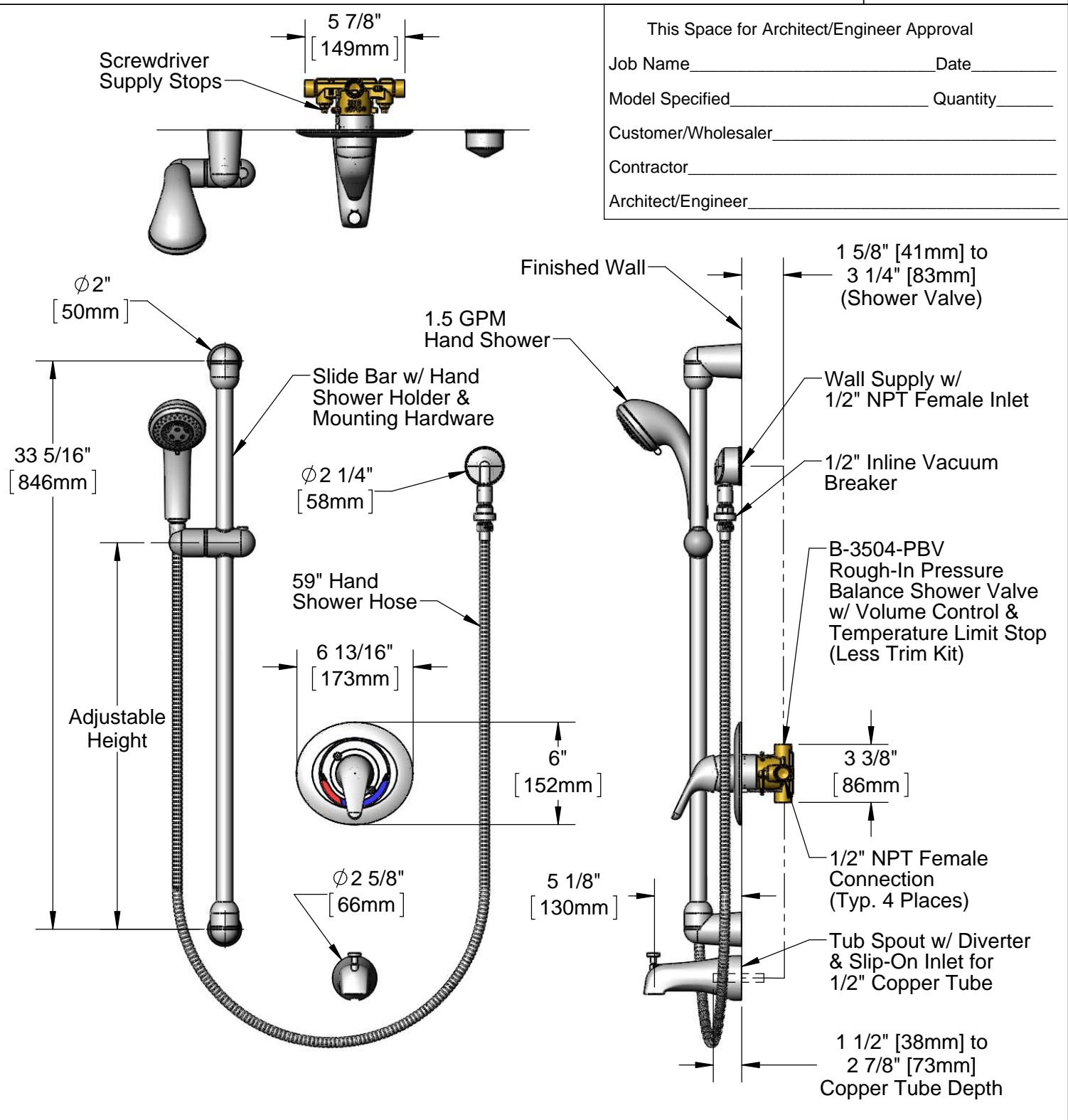
Job Name _____ Date _____

Model Specified _____ Quantity _____

Customer/Wholesaler _____

Contractor _____

Architect/Engineer _____



Product Specifications:
 Pressure Balance Shower Valve (ASSE 1016), w/ 1/2" NPT Female Connections, Wall Supply, Inline Vacuum Breaker, 59" Hand Shower Hose, Slide Bar w/ Hand Shower Holder, & Tub Spout w/ Diverter

Drawn DMH	Checked KJG	Approved JHB
Scale: 1:8		Date: 05/03/13



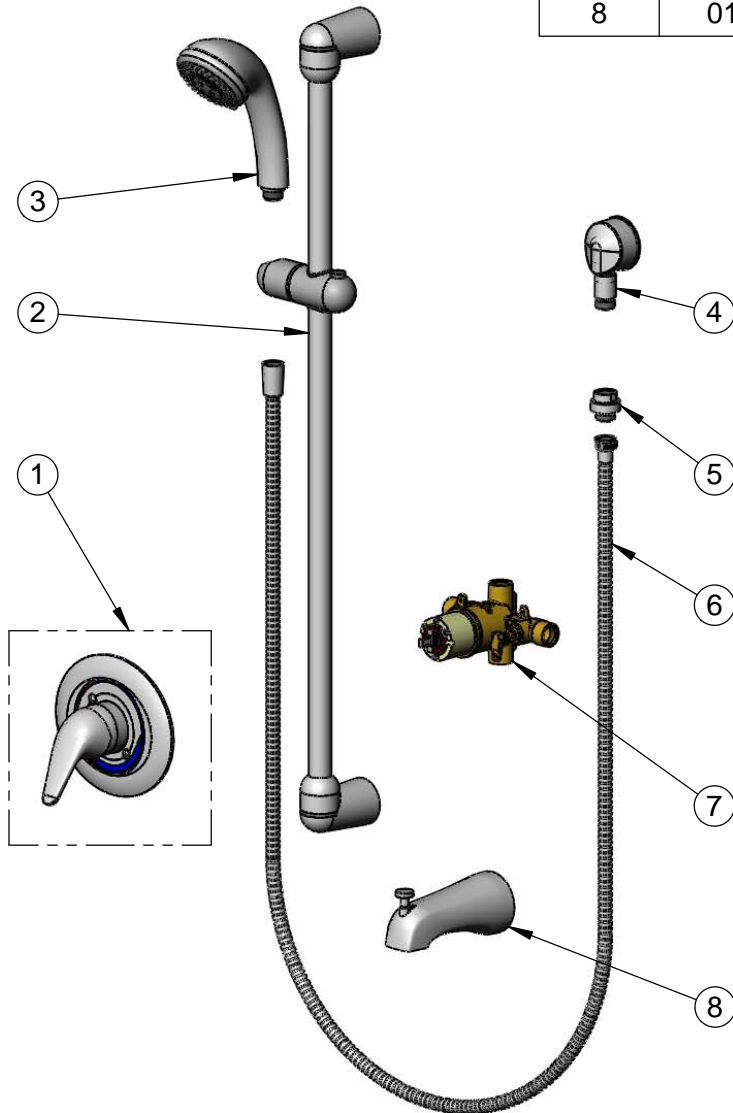
T&S BRASS AND BRONZE WORKS, INC.
 2 Saddleback Cove / P.O. Box 1088
 Travelers Rest, SC 29690

Model No.
B-3507-VB

Item No.

Travelers Rest, SC: 800-476-4103 • Simi Valley, CA: 800-423-0150 • Fax: 864-834-3518 • www.tsbrass.com

ITEM NO.	SALES NO.	DESCRIPTION
1	018670-45	Valve Only Trim Kit
2	018593-45	36" Slide Bar & Hand Shower Holder
3	018594-45	3 Function Hand Shower, 1.5 GPM
4	018596-45	Wall Outlet
5	018597-45	1/2" Inline Vacuum Breaker
6	018595-45	59" Hand Shower Hose
7	B-3504-PBV	1.5 GPM PB Shower Valve, 1/2" NPT
8	018998-45	Slip-On Diverter Tub Spout



Product Specifications:

Pressure Balance Shower Valve (ASSE 1016), w/ 1/2" NPT Female Connections, Wall Supply, Inline Vacuum Breaker, 59" Hand Shower Hose, Slide Bar w/ Hand Shower Holder, & Tub Spout w/ Diverter

Drawn DMH	Checked KJG	Approved JHB
Scale: NTS		Date: 05/03/13