



**T&S BRASS AND BRONZE WORKS, INC.**  
 2 Saddleback Cove / P.O. Box 1088  
 Travelers Rest, SC 29690

Model No.  
**B-3505**

Item No.

Travelers Rest, SC: 800-476-4103 • Simi Valley, CA: 800-423-0150 • Fax: 864-834-3518 • www.tsbrass.com

This Space for Architect/Engineer Approval

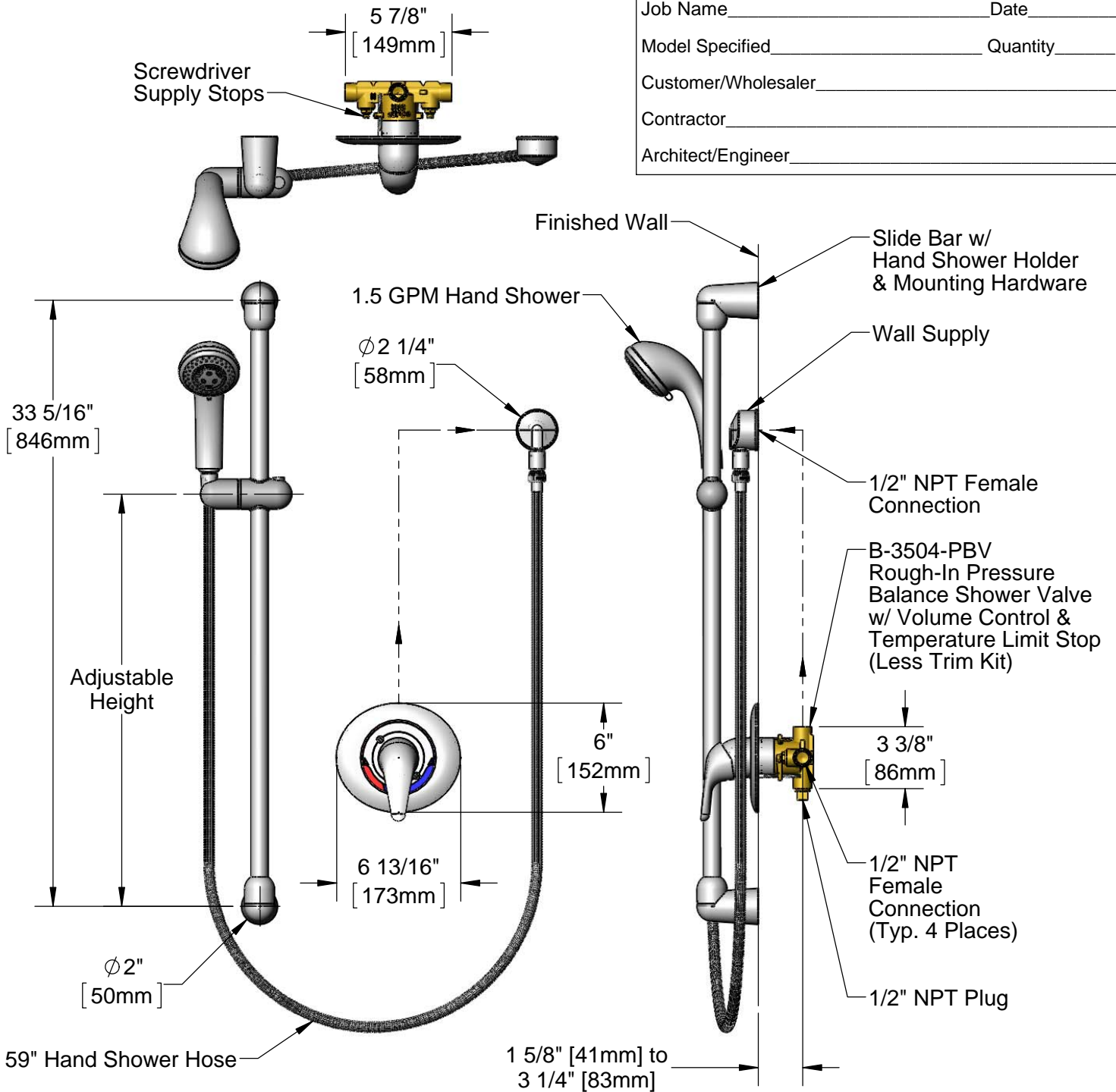
Job Name \_\_\_\_\_ Date \_\_\_\_\_

Model Specified \_\_\_\_\_ Quantity \_\_\_\_\_

Customer/Wholesaler \_\_\_\_\_

Contractor \_\_\_\_\_

Architect/Engineer \_\_\_\_\_



Product Specifications:  
 Pressure Balance Shower Valve (ASSE 1016), w/ 1/2" NPT Connections, Wall Supply, 59" Hand Shower Hose, Slide Bar w/ Hand Shower Holder, & 1.5 GPM Hand Shower

Drawn <b>DMH</b>	Checked <b>KJG</b>	Approved <b>JHB</b>
Scale: <b>1:8</b>		Date: <b>01/09/13</b>



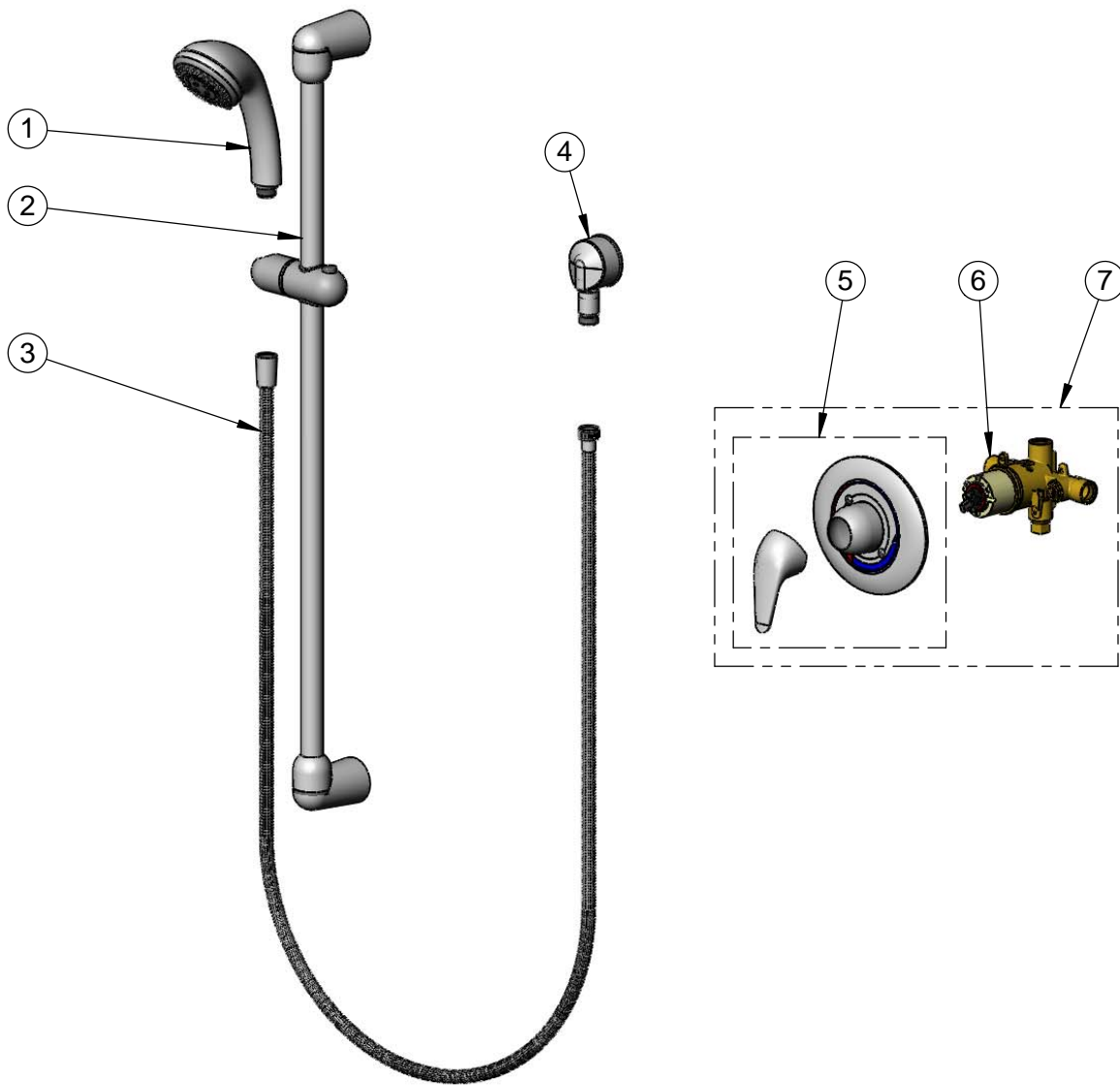
**T&S BRASS AND BRONZE WORKS, INC.**  
 2 Saddleback Cove / P.O. Box 1088  
 Travelers Rest, SC 29690

Model No.  
**B-3505**

Item No.

Travelers Rest, SC: 800-476-4103 • Simi Valley, CA: 800-423-0150 • Fax: 864-834-3518 • www.tsbrass.com

ITEM NO.	SALES NO.	DESCRIPTION
1	018594-45	3 Function Hand Shower, 1.5 GPM
2	018593-45	36" Slide Bar & Hand Shower Holder
3	018595-45	59" Hand Shower Hose
4	018596-45	Wall Outlet
5	018670-45	Valve Only Trim Kit
6	B-3504-PBV	PB Shower Rough-In Valve
7	B-3504	PB Shower Valve Only w/ Trim Kit



Product Specifications:  
 Pressure Balance Shower Valve (ASSE 1016), w/ 1/2" NPT  
 Connections, Wall Supply, 59" Hand Shower Hose, Slide Bar w/  
 Hand Shower Holder, & 1.5 GPM Hand Shower

Drawn <b>DMH</b>	Checked <b>KJG</b>	Approved <b>JHB</b>
Scale: <b>NTS</b>		Date: <b>01/09/13</b>