



# T&S BRASS AND BRONZE WORKS, INC.

2 Saddleback Cove / P.O. Box 1088  
Travelers Rest, SC 29690

Model No.

**B-3406**

Item No.

Travelers Rest, SC: 800-476-4103 • Simi Valley, CA: 800-423-0150 • Fax: 864-834-3518 • www.tsbrass.com

This Space for Architect/Engineer Approval

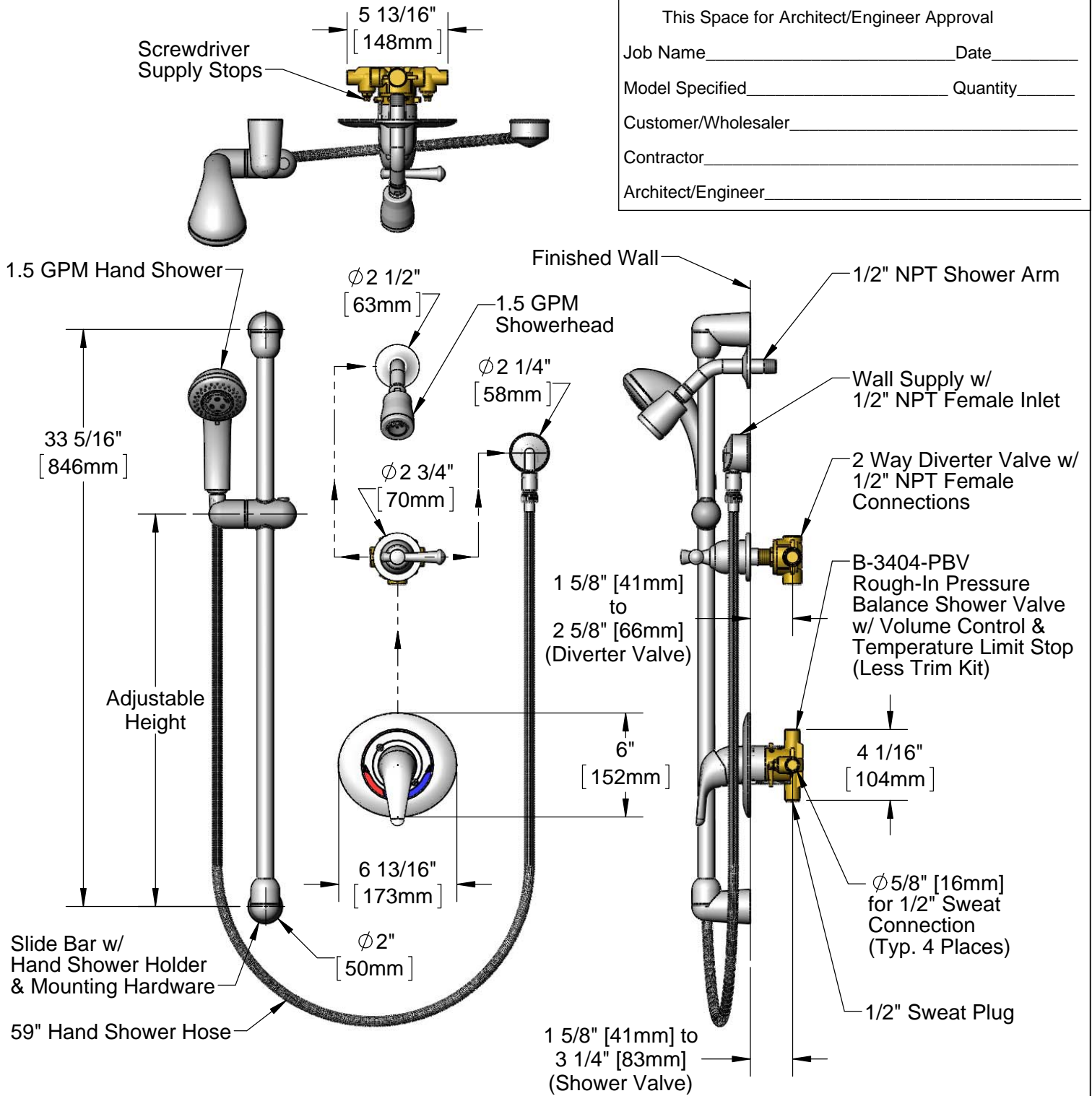
Job Name \_\_\_\_\_ Date \_\_\_\_\_

Model Specified \_\_\_\_\_ Quantity \_\_\_\_\_

Customer/Wholesaler \_\_\_\_\_

Contractor \_\_\_\_\_

Architect/Engineer \_\_\_\_\_



**Product Specifications:**

Pressure Balance Shower Valve (ASSE 1016), w/ 1/2" Sweat Connections, 2 Way Diverter Valve, Wall Supply, 59" Hand Shower Hose, Slide Bar w/ Hand Shower Holder, 1.5 GPM Hand Shower & 1.5 GPM Showerhead

Drawn

**DMH**

Checked

**KJG**

Approved

**JHB**

Scale:

**1:8**

Date:

**01/09/13**



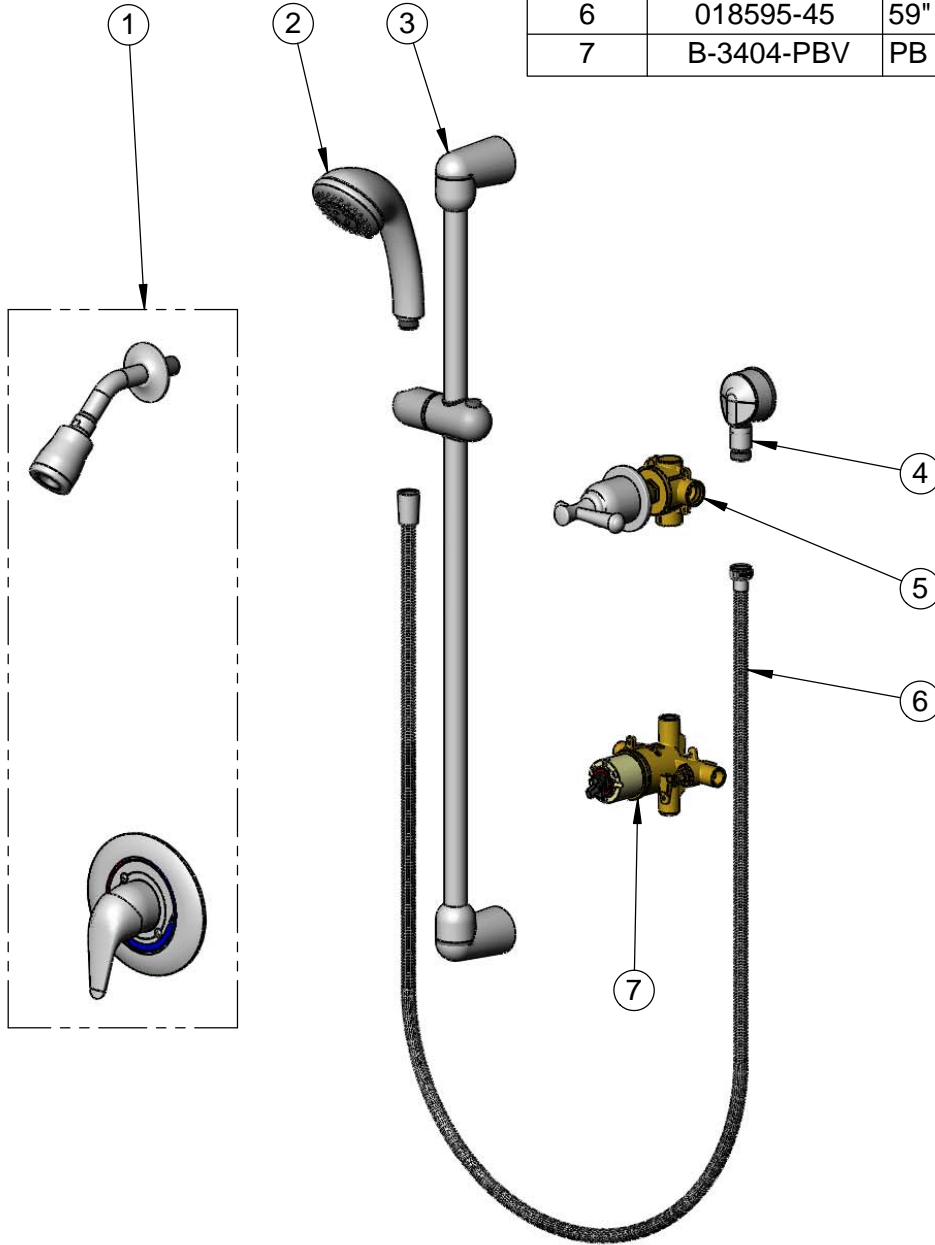
**T&S BRASS AND BRONZE WORKS, INC.**  
 2 Saddleback Cove / P.O. Box 1088  
 Travelers Rest, SC 29690

Model No.  
**B-3406**

Item No.

Travelers Rest, SC: 800-476-4103 • Simi Valley, CA: 800-423-0150 • Fax: 864-834-3518 • www.tsbrass.com

ITEM NO.	SALES NO.	DESCRIPTION
1	018592-45	Shower Trim Kit
2	018594-45	3 Function Hand Shower, 1.5 GPM
3	018593-45	36" Slide Bar & Hand Shower Holder
4	018596-45	Wall Outlet
5	018590-45	2 Way Diverter Valve
6	018595-45	59" Hand Shower Hose
7	B-3404-PBV	PB Shower Rough-In Valve



**Product Specifications:**

Pressure Balance Shower Valve (ASSE 1016), w/ 1/2" Sweat Connections, 2 Way Diverter Valve, Wall Supply, 59" Hand Shower Hose, Slide Bar w/ Hand Shower Holder, 1.5 GPM Hand Shower & 1.5 GPM Showerhead

Drawn <b>DMH</b>	Checked <b>KJG</b>	Approved <b>JHB</b>
Scale: <b>NTS</b>		Date: <b>01/09/13</b>