

T&S BRASS AND BRONZE WORKS, INC.
 2 Saddleback Cove / P.O. Box 1088
 Travelers Rest, SC 29690

Model No.
B-2870

Item No.

Travelers Rest, SC: 800-476-4103 • Simi Valley, CA: 800-423-0150 • Fax: 864-834-3518 • www.tsbrass.com

This Space for Architect/Engineer Approval

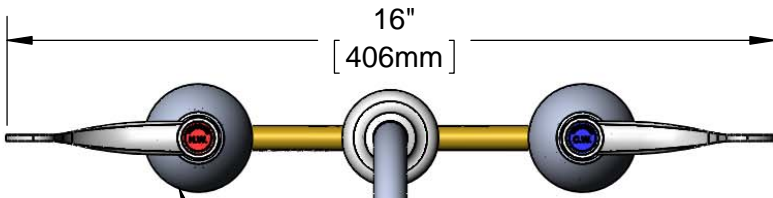
Job Name _____ Date _____

Model Specified _____ Quantity _____

Customer/Wholesaler _____

Contractor _____

Architect/Engineer _____



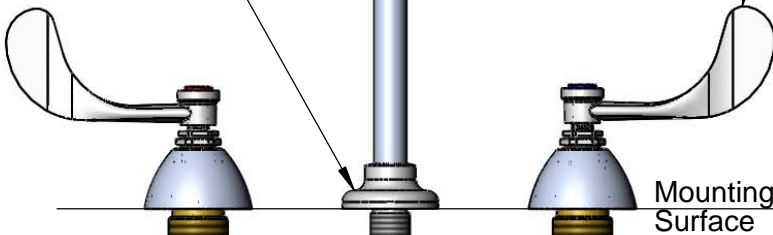
Ø2-1/4"
 [57mm]
 Escutcheons



ADA Compliant

Eterna Cartridges &
 4" Wrist Action Handles
 w/ Color Coded Indexes

Ø2"
 [51mm]
 Rigid Deck
 Flange



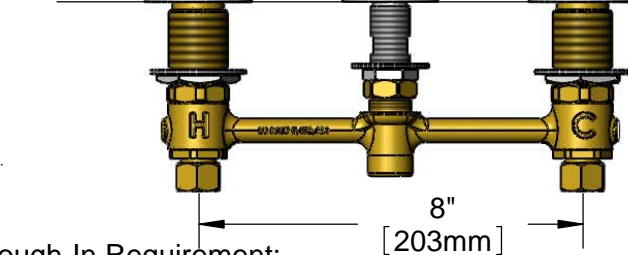
Mounting
 Surface

5 7/8"
 [149mm]

8 1/2"
 [216mm]

12 1/8"
 [308mm]

129X
 Rigid Gooseneck
 w/ B-LT Stream
 Regulator
 Outlet



8"
 [203mm]

1-1/4"
 [32mm]
 Max Thickness

1/2" NPSM
 Coupling Nuts

Rough-In Requirement:
 Ø1" [25mm] for Center Shank
 Ø1-1/2" [38mm] for Hot/Cold Side

Product Specifications:
 EasyInstall Faucet w/ 4" Wrist Action Handles, Eterna Cartridges,
 8" Inlet Centers & Rigid Gooseneck w/ B-LT Stream Regulator Outlet

Drawn JRM	Checked DMH	Approved JHB
---------------------	-----------------------	------------------------

Scale: 1:4	Date: 06/21/12
----------------------	--------------------------



T&S BRASS AND BRONZE WORKS, INC.

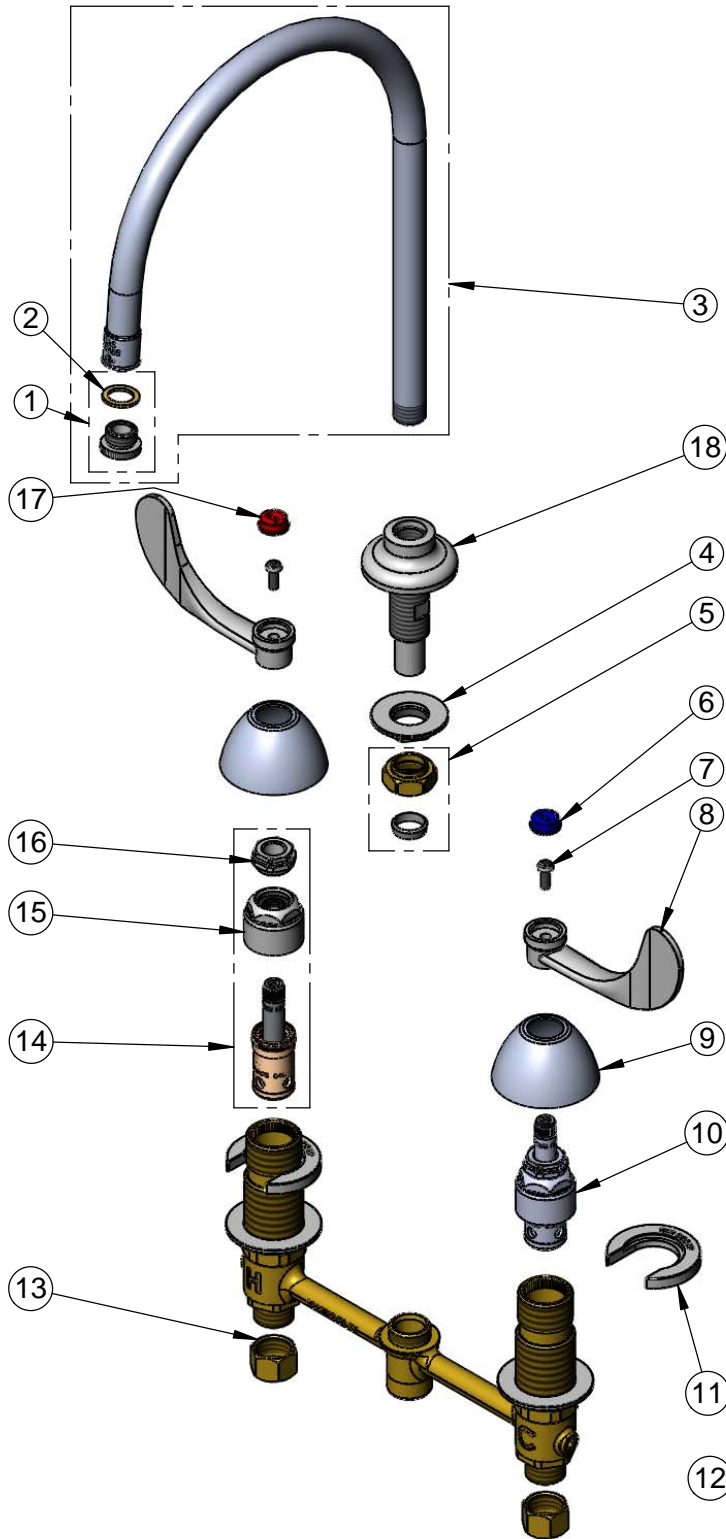
2 Saddleback Cove / P.O. Box 1088
Travelers Rest, SC 29690

Model No.

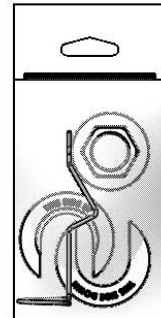
B-2870

Item No.

Travelers Rest, SC: 800-476-4103 • Simi Valley, CA: 800-423-0150 • Fax: 864-834-3518 • www.tsbrass.com



ITEM NO.	SALES NO.	DESCRIPTION
1	B-LT	Stream Regulator Outlet
2	001043-45	Washer
3	129X	Rigid Gooseneck w/B-LT
4	016742-45	Center Flange Nut
5	016745-45	Compression Nut & Fitting
6	001686-45	Blue CW Index
7	000925-45	Lab Handle Screw
8	B-WH4	4" Wrist Action Handle
9	001257-40	Bell Escutcheon
10	016752-40	EasyInstall CWS LTC Eterna (Teflon)
11	016749-45	Sidebody C-Washer
12	016777-45	CWS Hanger
13	000958-20	Coupling Nut
14	016753-40	EasyInstall CWS RTC Eterna (Teflon)
15	016743-25	CWS Bonnet Assembly
16	009002-25	Packing Nut Assembly
17	001194-45	Red HW Index
18	016847-40	EasyInstall CWS Rigid Center Shank



017245-40
Installation Repair Kit
Includes #4, (2)#11, & #12

Product Specifications:

EasyInstall Faucet w/ 4" Wrist Action Handles, Eterna Cartridges, 8" Inlet Centers & Rigid Gooseneck w/ B-LT Stream Regulator Outlet

Drawn

JRM

Checked

DMH

Approved

JHB

Scale:

NTS

Date:

06/21/12