



T&S BRASS AND BRONZE WORKS, INC.

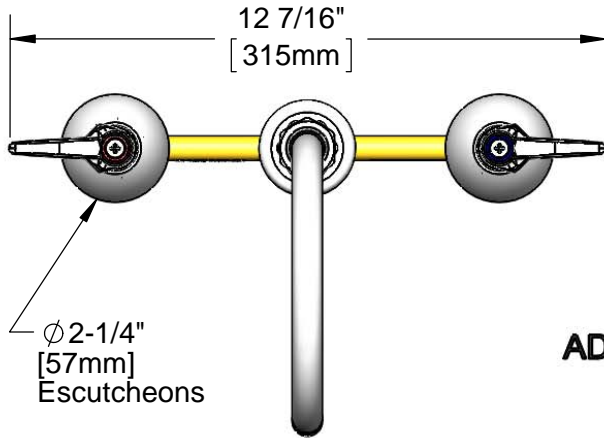
2 Saddleback Cove / P.O. Box 1088
Travelers Rest, SC 29690

Model No.

B-2866-CR5XPF15

Item No.

Travelers Rest, SC: 800-476-4103 • Simi Valley, CA: 800-423-0150 • Fax: 864-834-3518 • www.tsbrass.com



This Space for Architect/Engineer Approval

Job Name _____ Date _____

Model Specified _____ Quantity _____

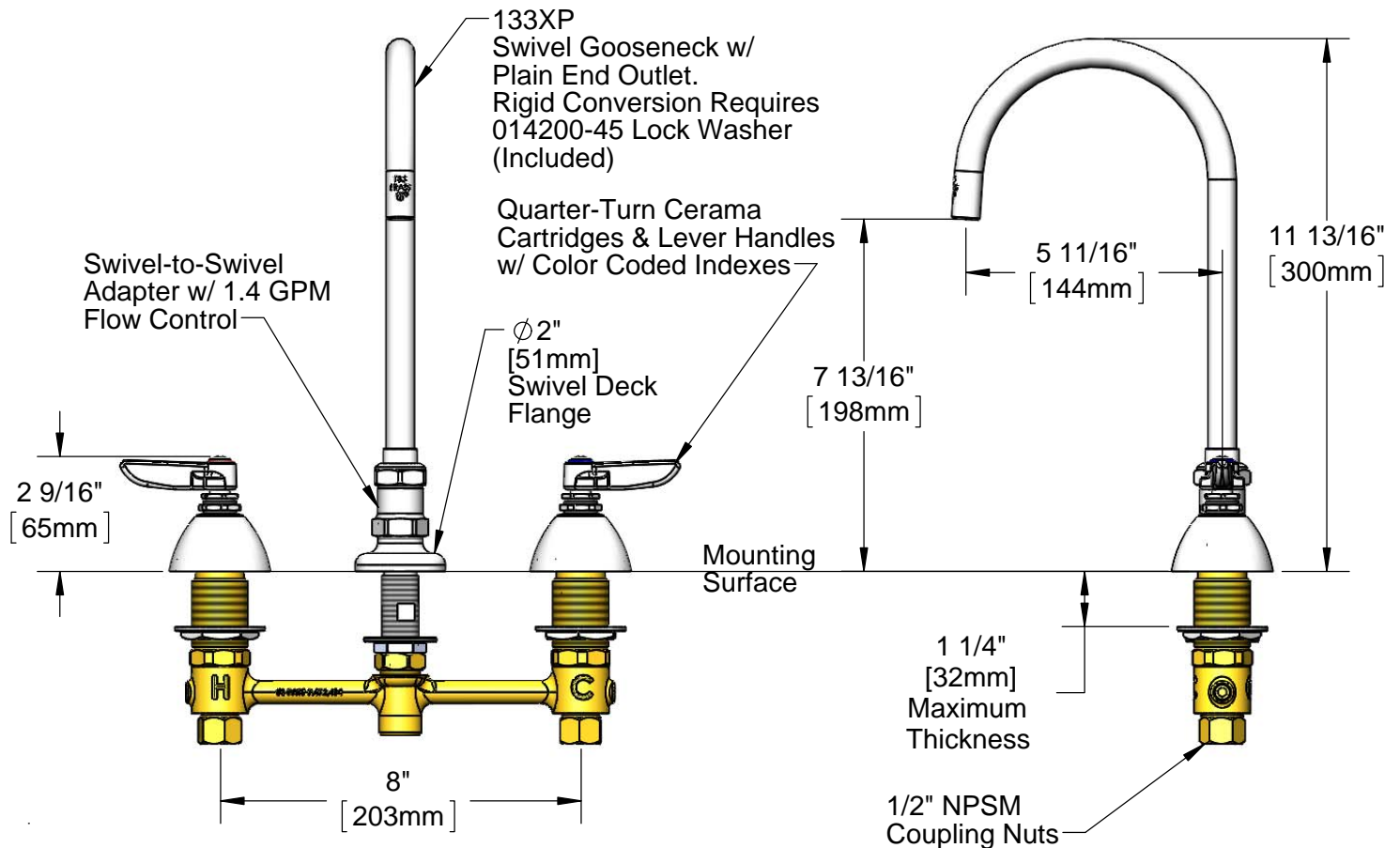
Customer/Wholesaler _____

Contractor _____

Architect/Engineer _____



ADA Compliant



Rough-In Requirement:

Ø 1" [25mm] for Center Shank

Ø 1-1/2" [38mm] for Hot/Cold Side

Product Specifications:

8" Deck Mount EasyInstall Mixing Faucet, Quarter-Turn Cerama Cartridges, Lever Handles, Swivel Gooseneck w/ Plain End Outlet, Swivel-to-Swivel Adapter w/ 1.4 GPM Flow Control & 1/2" NPSM Male Inlets w/ Coupling Nuts

Product Compliance:

ASME A112.18.1 / CSA B125.1
NSF 61 - Section 9
NSF 372 (Low Lead Content)
ANSI A117.1 (ADA)



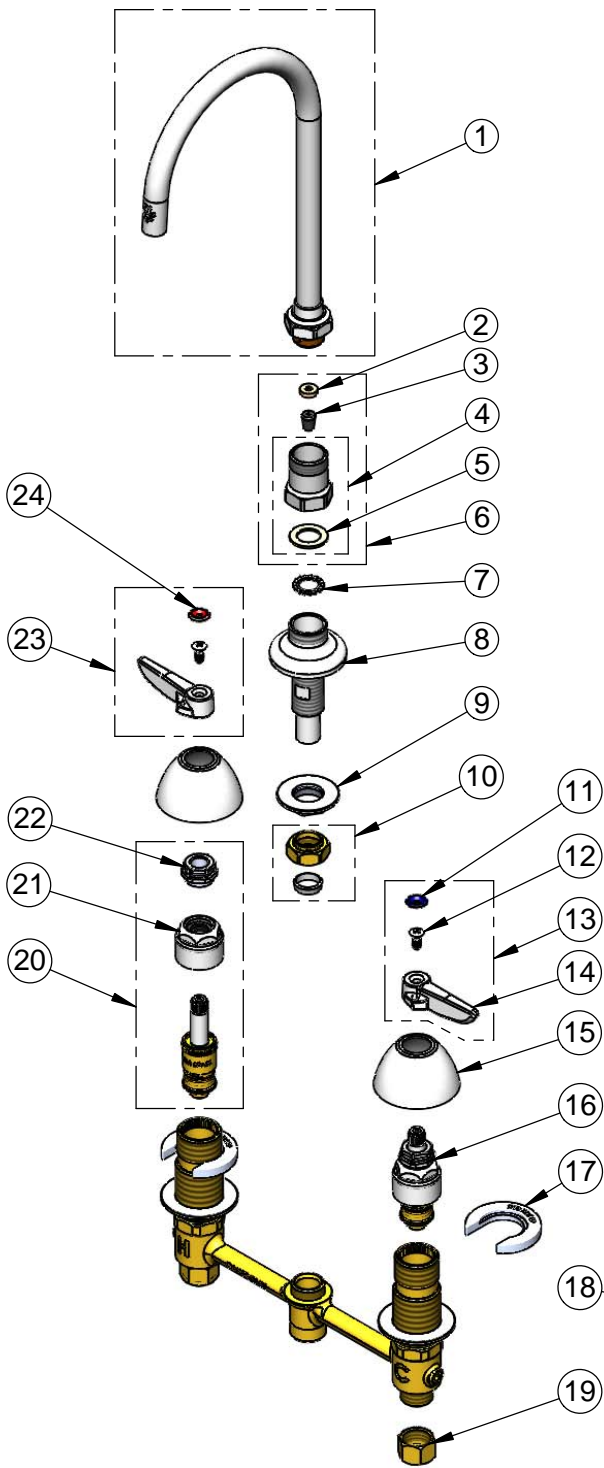
T&S BRASS AND BRONZE WORKS, INC.

2 Saddleback Cove / P.O. Box 1088
Travelers Rest, SC 29690

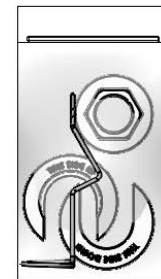
Model No.
B-2866-CR5XPF15

Item No.

Travelers Rest, SC: 800-476-4103 • Simi Valley, CA: 800-423-0150 • Fax: 864-834-3518 • www.tsbrass.com



ITEM NO.	SALES NO.	DESCRIPTION
1	133XP	Swivel Gooseneck w/ Plain End Outlet
2	009069-45	Flow Control Holder
3	001644-45	1.4 GPM Flow Tower
4	B-0411	Swivel-to-Swivel Adapter
5	001049-45	Washer
6	B-0411-F15	Swivel-to-Swivel Adapter w/ 1.4 GPM Flow Control
7	014200-45	Star Washer, Anti-Rotation
8	016754-40	EasyInstall CWS Swivel Center Shank
9	016742-45	Center Flange Nut
10	016745-45	Compression Nut & Fitting
11	001660-45	Blue Index-CW
12	000922-45	Lever Handle Screw
13	001636-45	Lever Handle, Index (Blue) & Screw
14	001638-45	Lever Handle
15	001257-40	Bell Escutcheon
16	016768-25	EasyInstall CWS LTC Cerama
17	016749-45	Sidebody C-Washer
18	016777-45	CWS Hanger
19	000958-20	Coupling Nut
20	016767-25	EasyInstall CWS RTC Cerama
21	016743-25	CWS Eterna Bonnet
22	009002-25	Packing Nut
23	001637-45	Lever Handle, Index (Hot) & Screw
24	001661-45	Red Index-HW



017245-40
Installation Repair Kit
Includes #9, (2)#17 & 18

Product Specifications:

8" Deck Mount EasyInstall Mixing Faucet, Quarter-Turn Cerama Cartridges, Lever Handles, Swivel Gooseneck w/ Plain End Outlet, Swivel-to-Swivel Adapter w/ 1.4 GPM Flow Control & 1/2" NPSM Male Inlets w/ Coupling Nuts

Product Compliance:

ASME A112.18.1 / CSA B125.1
NSF 61 - Section 9
NSF 372 (Low Lead Content)
ANSI A117.1 (ADA)