



# T&S BRASS AND BRONZE WORKS, INC.

2 Saddleback Cove / P.O. Box 1088  
Travelers Rest, SC 29690

Model No.

**B-2382**

Item No.

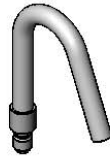
Travelers Rest, SC: 800-476-4103 • Simi Valley, CA: 800-423-0150 • Fax: 864-834-3518 • www.tsbrass.com



**B-1421**  
Spray Head  
(EPAAct2005  
Compliant)  
(Included)



**B-1422**  
Spray Nozzle  
(EPAAct2005  
Non-Compliant)  
(Included)



**B-1424**  
Quick Connect  
Hook Nozzle  
(Included)

This Space for Architect/Engineer Approval

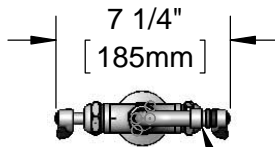
Job Name \_\_\_\_\_ Date \_\_\_\_\_

Model Specified \_\_\_\_\_ Quantity \_\_\_\_\_

Customer/Wholesaler \_\_\_\_\_

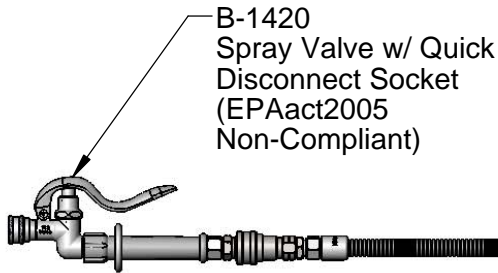
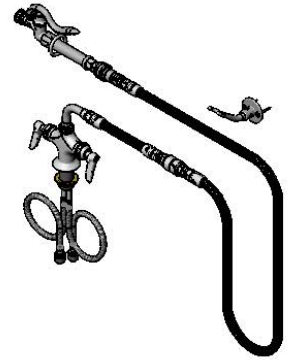
Contractor \_\_\_\_\_

Architect/Engineer \_\_\_\_\_



7 1/4"  
[185mm]

Items Not Shown  
for Clarity



**B-1420**  
Spray Valve w/ Quick  
Disconnect Socket  
(EPAAct2005  
Non-Compliant)



**B-0166**  
Hanger Hook

Items Not Shown  
for Clarity

90° Swivel  
Adapter Arm

Swivel Joint

Mounting Surface

1 3/8"  
[35mm]  
Maximum  
Thickness

72" Flexible Stainless Steel  
Hose w/ Vacuum Breaker &  
Quick Disconnect

6 11/16"  
[170mm]

**B-0970-FE**  
3/8" NPT  
Vacuum  
Breaker

Quarter-Turn Cerama  
Cartridges w/ Check  
Valves & Lever  
Handles w/ Color  
Coded Indexes

18" Flexible Stainless  
Steel Hoses

Compression Fittings  
for 5/8" O.D. Copper Tubing  
(Remove Compression Nut  
for 1/2" NPSM Male)

Ø 2 1/4" [57mm]  
Deck Flange

Rough-In Requirement:  
Ø 1 1/2" [38mm] Mounting Hole

**Product Specifications:**

Single Hole Deck Mount Mixing Faucet, Quarter-Turn Cerama Cartridges w/ Check Valves, Lever Handles, 72" Vacuum Breaker/Quick Disconnect Flexible Stainless Steel Hose, Quick Disconnect Spray Valve w/ Spray Accessories, Wall Hook & Flexible Stainless Steel Supply Hoses

**Product Compliance:**

ASME A112.18.1 / CSA B125.1  
NSF 61 - Section 9  
NSF 372 (Low Lead Content)  
EPAAct 2005 (PRSV) B-1421 Only



# T&S BRASS AND BRONZE WORKS, INC.

2 Saddleback Cove / P.O. Box 1088  
Travelers Rest, SC 29690

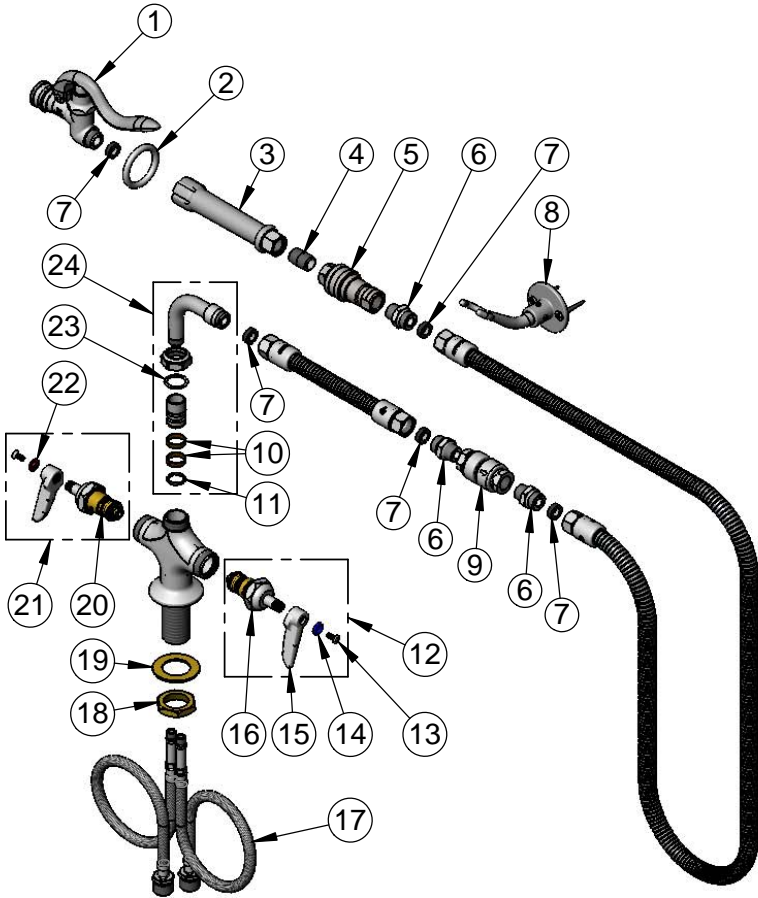
Model No.

**B-2382**

Item No.

Travelers Rest, SC: 800-476-4103 • Simi Valley, CA: 800-423-0150 • Fax: 864-834-3518 • www.tsbrass.com

ITEM NO.	SALES NO.	DESCRIPTION
1	B-1420	Spray Valve w/ Quick Disconnect Socket
2	000907-45	Spray Valve Hold Down Ring
3	002987-40	Grip Handle
4	002535-25	3/8" Close Nipple
5	AW-5B	3/8" NPT Quick Disconnect
6	053A	Adapter, 3/8" NPT Male
7	010476-45	#27 Washer
8	B-0166	Wall Hook
9	B-0970-FE	3/8" NPT Vacuum Breaker
10	011429-45	Swivel Sleeves (2)
11	001074-45	O-Ring
12	012447-25	Quarter-Turn Cerama Cartridge, LTC w/ Check Valve, Handle, Index & Screw
13	000922-45	Lever Handle Screw
14	001660-45	Blue Index-CW
15	001638-45	Lever Handle
16	012395-25	Quarter-Turn Cerama Cartridge, LTC w/ Check Valve
17	012534-45	18" Flexible Supply Hose (2)
18	000965-45	Lock Nut
19	002290-45	Lock Washer
20	012394-25	Quarter-Turn Cerama Cartridge, RTC w/ Check Valve
21	012446-25	Quarter-Turn Cerama Cartridge, RTC w/ Check Valve, Handle, Index & Screw
22	001661-45	Red Index-HW
23	009538-45	Swivel Washer
24	034A	90° Swivel Adapter Arm



**Product Specifications:**

Single Hole Deck Mount Mixing Faucet, Quarter-Turn Cerama Cartridges w/ Check Valves, Lever Handles, 72" Vacuum Breaker/Quick Disconnect Flexible Stainless Steel Hose, Quick Disconnect Spray Valve w/ Spray Accessories, Wall Hook & Flexible Stainless Steel Supply Hoses

**Product Compliance:**

ASME A112.18.1 / CSA B125.1  
NSF 61 - Section 9  
NSF 372 (Low Lead Content)  
EPA Act 2005 (PRSV) B-1421 Only