



**T&S BRASS AND BRONZE WORKS, INC.**

2 Saddleback Cove / P.O. Box 1088  
Travelers Rest, SC 29690

Model No.

**B-2331**

Item No.

Travelers Rest, SC: 800-476-4103 • Simi Valley, CA: 800-423-0150 • Fax: 864-834-3518 • www.tsbrass.com

This Space for Architect/Engineer Approval

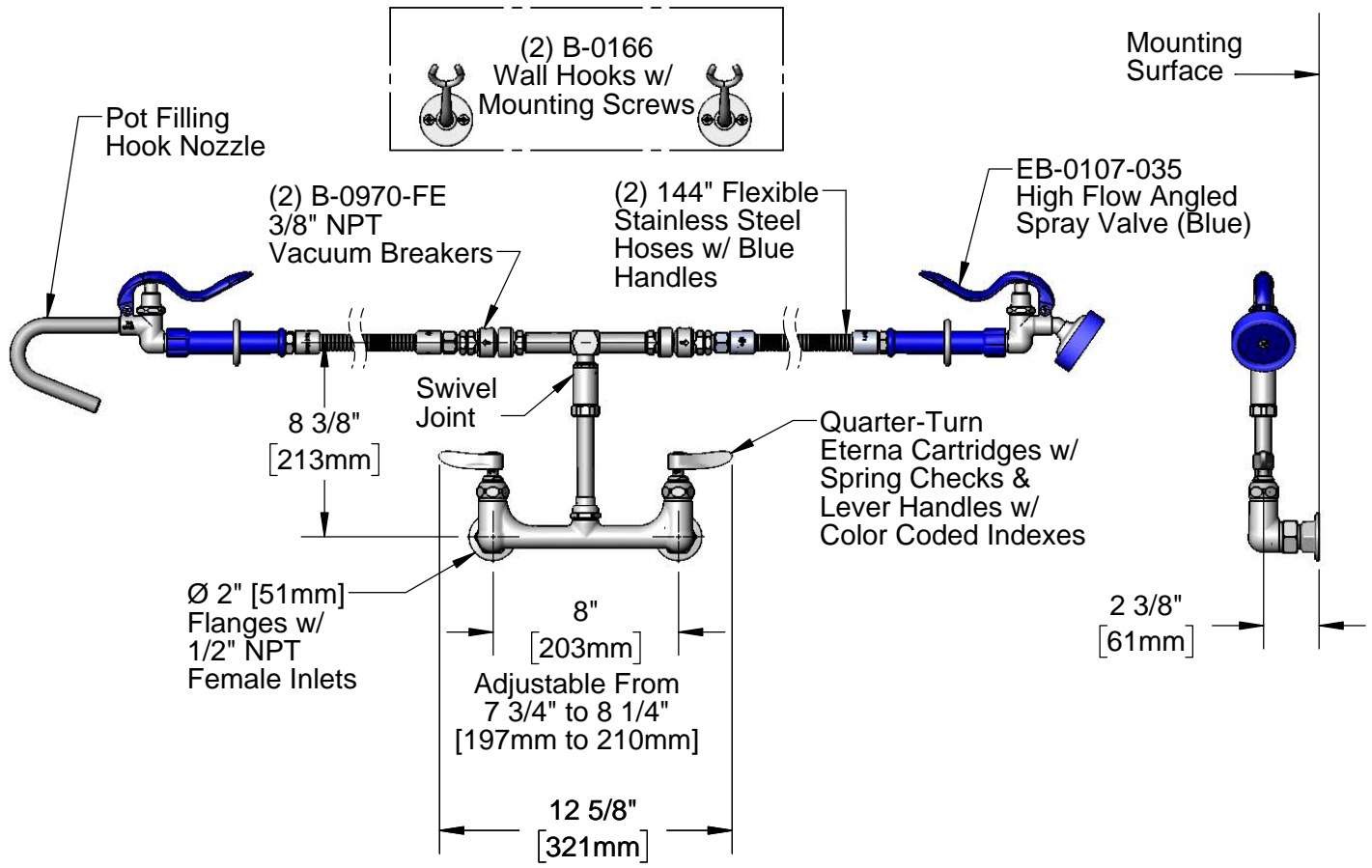
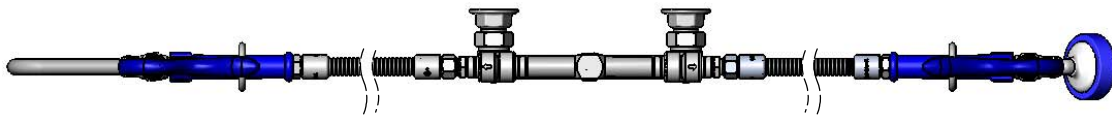
Job Name \_\_\_\_\_ Date \_\_\_\_\_

Model Specified \_\_\_\_\_ Quantity \_\_\_\_\_

Customer/Wholesaler \_\_\_\_\_

Contractor \_\_\_\_\_

Architect/Engineer \_\_\_\_\_



**Product Specifications:**

8" Wall Mount Kettle Kaddy Mixing Faucet, Quarter-Turn Eterna Cartridges w/ Spring Checks, Lever Handles, (2) 3/8" NPT Vacuum Breakers, (2) 144" Flexible Stainless Steel Hoses, Hook Nozzle, High Flow Angled Spray Valve & 1/2" NPT Female Inlets

**Product Compliance:**

ASME A112.18.1 / CSA B125.1  
NSF 61 - Section 9  
NSF 372 (Low Lead Content)  
EPA Act 2005 Non-Compliant (PRSV)  
CSA B64.8 (VB)

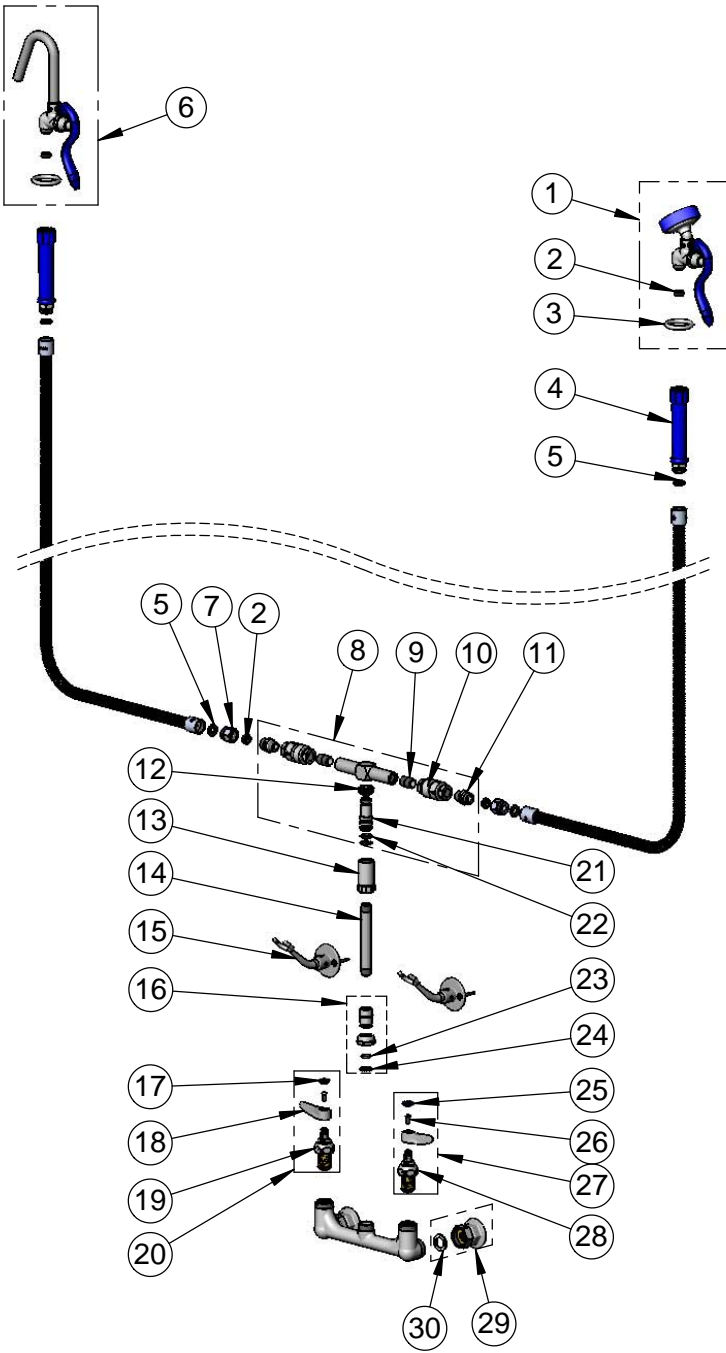


**T&S BRASS AND BRONZE WORKS, INC.**  
 2 Saddleback Cove / P.O. Box 1088  
 Travelers Rest, SC 29690

Model No.  
**B-2331**  
 Item No.

Travelers Rest, SC: 800-476-4103 • Simi Valley, CA: 800-423-0150 • Fax: 864-834-3518 • www.tsbrass.com

ITEM NO.	SALES NO.	DESCRIPTION
1	EB-0107-035	High Flow Angled Spray Valve (Blue)
2	010476-45	#27 Washer
3	000907-45	Spray Valve Hold Down Ring
4	011482-40	Blue Grip Handle
5	001014-45	Washer, B-0100 Hose Barrel
6	012952-40	Blue Spray Valve w/ Hook Nozzle
7	000729-40	Nut, 7/8-20 Male x 3/4-14 Female
8	009177-40	Swivel Tee w/ Vacuum Breakers
9	002535-25	Close Nipple, 3/8" NPT
10	B-0970-FE	3/8" NPT Vacuum Breaker
11	053A	Adapter, 3/8" NPT Male
12	000735-40	Swivel Nut
13	000591-25	Swivel Body, 3/8 NPT
14	000361-40	3/8" NPT x 5" Nipple
15	B-0166	Wall Hook
16	EZ-K	EasyInstall Kit
17	001193-19NS	Red Button Index, Press-in
18	001638-45NS	Lever Handle (New Style)
19	012443-40NS	Quarter-Turn Eterna Cartridge w/ Spring Check, RTC
20	002712-40NS	Quarter-Turn Eterna Cartridge w/ Spring Check, Handle, Red Index & Screw, RTC
21	000839-25	Swivel Stem, 3/8 NPT
22	001074-45	O-Ring
23	001065-45	O-Ring
24	014200-45	Star Washer, Anti-Rotation
25	018506-19NS	Blue Button Index, Press-in
26	000925-45	Lab Handle Screw
27	002711-40NS	Quarter-Turn Eterna Cartridge w/ Spring Check, Handle, Blue Index & Screw, LTC
28	0102442-40NS	Quarter-Turn Eterna Cartridge w/ Spring Check, LTC
29	00AA	1/2" NPT Female Eccentric Flange
30	001019-45	Coupling Nut Washer



**Product Specifications:**  
 8" Wall Mount Kettle Kaddy Mixing Faucet, Quarter-Turn Eterna Cartridges w/ Spring Checks, Lever Handles, (2) 3/8" NPT Vacuum Breakers, (2) 144" Flexible Stainless Steel Hoses, Hook Nozzle, High Flow Angled Spray Valve & 1/2" NPT Female Inlets

**Product Compliance:**  
 ASME A112.18.1 / CSA B125.1  
 NSF 61 - Section 9  
 NSF 372 (Low Lead Content)  
 EPAct 2005 Non-Compliant (PRSV)  
 CSA B64.8 (VB)