



T&S BRASS AND BRONZE WORKS, INC.
 2 Saddleback Cove / P.O. Box 1088
 Travelers Rest, SC 29690

Model No.
B-2331-08H

Item No.

Travelers Rest, SC: 800-476-4103 • Simi Valley, CA: 800-423-0150 • Fax: 864-834-3518 • www.tsbrass.com

This Space for Architect/Engineer Approval

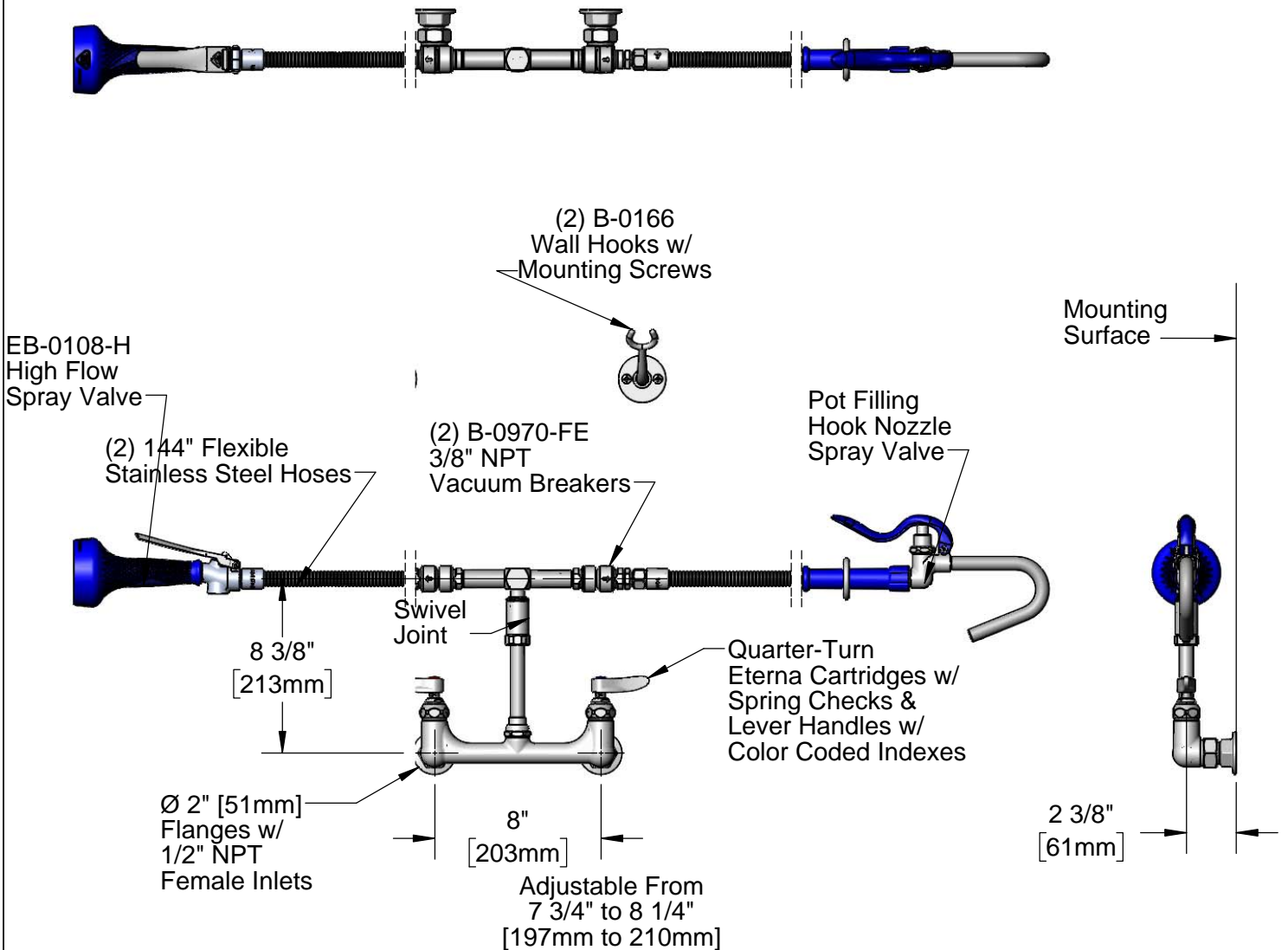
Job Name _____ Date _____

Model Specified _____ Quantity _____

Customer/Wholesaler _____

Contractor _____

Architect/Engineer _____



Product Specifications:
 8" Wall Mount Kettle Kaddy Mixing Faucet, Quarter-Turn Eterna Cartridges w/ Spring Checks, Lever Handles, (2) 3/8" NPT Vacuum Breakers, (2) 144" Flexible Stainless Steel Hoses, Hook Nozzle Spray Valve, High Flow Spray Valve & 1/2" NPT Female Inlets

Product Compliance:
 ASME A112.18.1 / CSA B125.1
 NSF 61 - Section 9
 NSF 372 (Low Lead Content)
 EPA Act 2005 Non-Compliant (PRSV)
 CSA B64.8 (VB)



T&S BRASS AND BRONZE WORKS, INC.

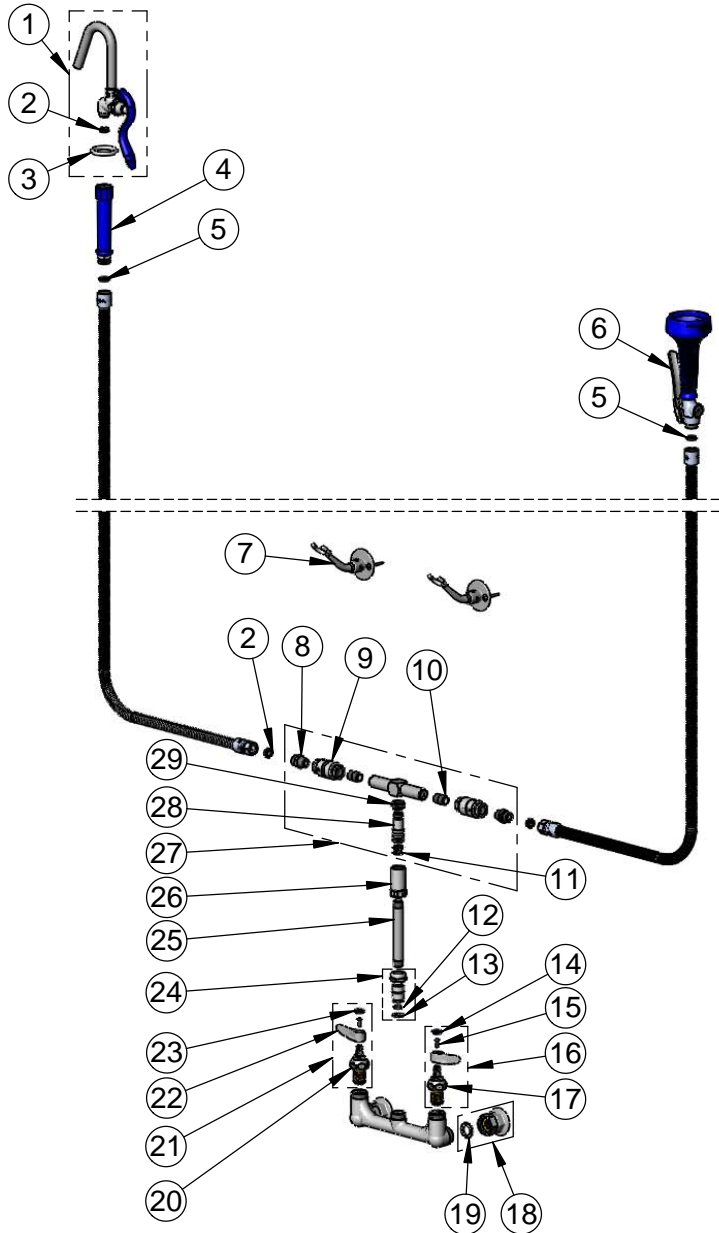
2 Saddleback Cove / P.O. Box 1088
Travelers Rest, SC 29690

Model No.

B-2331-08H

Item No.

Travelers Rest, SC: 800-476-4103 • Simi Valley, CA: 800-423-0150 • Fax: 864-834-3518 • www.tsbrass.com



ITEM NO.	SALES NO.	DESCRIPTION
1	012952-40	Spray Valve (Blue) w/ Hook Nozzle
2	010476-45	#27 Washer
3	000907-45	Spray Valve Hold Down Ring
4	011482-45	Blue Grip Handle
5	001014-45	Washer, B-0100 Hose Barrel
6	EB-0108-H	High Flow Spray Valve
7	B-0166	Wall Hook
8	053A	Adapter, 3/8" NPT Male
9	B-0970-FE	3/8" NPT Vacuum Breaker
10	002535-25	3/8" Close Nipple
11	001074-45	O-Ring
12	001065-45	O-Ring
13	014200-45	Star Washer, Anti-Rotation
14	018506-19NS	Blue Button Index, Press-in
15	000925-45	Lab Handle Screw
16	002711-40NS	Quarter-Turn Eterna Cartridge w/ Spring Check, Handle, Blue Index & Screw, LTC
17	012442-40NS	Quarter-Turn Eterna Cartridge w/ Spring Check, LTC
18	00AA	1/2" NPT Female Eccentric Flange
19	001019-45	Coupling Nut Washer
20	012443-40NS	Quarter-Turn Eterna Cartridge w/ Spring Check, RTC
21	002712-40NS	Quarter-Turn Eterna Cartridge w/ Spring Check, Handle, Red Index & Screw, RTC
22	001638-45NS	Lever Handle (New Style)
23	001193-19NS	Red Button Index, Press-in
24	EZ-K	EasyInstall Kit
25	000341-40	Nipple, 3/8" NPT x 5"
26	000591-25	Swivel Body, 3/8 NPT
27	009177-40	Swivel Tee w/ Vacuum Breakers
28	000839-25	Swivel Stem, 3/8 NPT
29	000735-40	Swivel Nut

Product Specifications:

8" Wall Mount Kettle Kaddy Mixing Faucet, Quarter-Turn Eterna Cartridges w/ Spring Checks, Lever Handles, (2) 3/8" NPT Vacuum Breakers, (2) 144" Flexible Stainless Steel Hoses, Hook Nozzle Spray Valve, High Flow Spray Valve & 1/2" NPT Female Inlets

Product Compliance:

ASME A112.18.1 / CSA B125.1
NSF 61 - Section 9
NSF 372 (Low Lead Content)
EPA Act 2005 Non-Compliant (PRSV)
CSA B64.8 (VB)