



T&S BRASS AND BRONZE WORKS, INC.

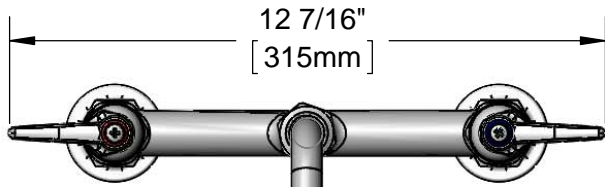
2 Saddleback Cove / P.O. Box 1088
Travelers Rest, SC 29690

Model No.

B-2280

Item No.

Travelers Rest, SC: 800-476-4103 • Simi Valley, CA: 800-423-0150 • Fax: 864-834-3518 • www.tsbrass.com



This Space for Architect/Engineer Approval

Job Name _____ Date _____

Model Specified _____ Quantity _____

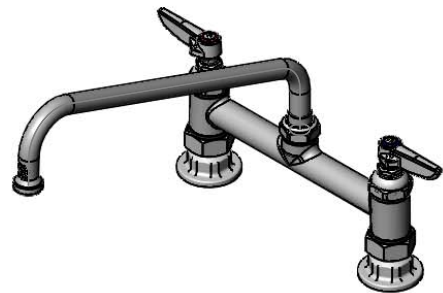
Customer/Wholesaler _____

Contractor _____

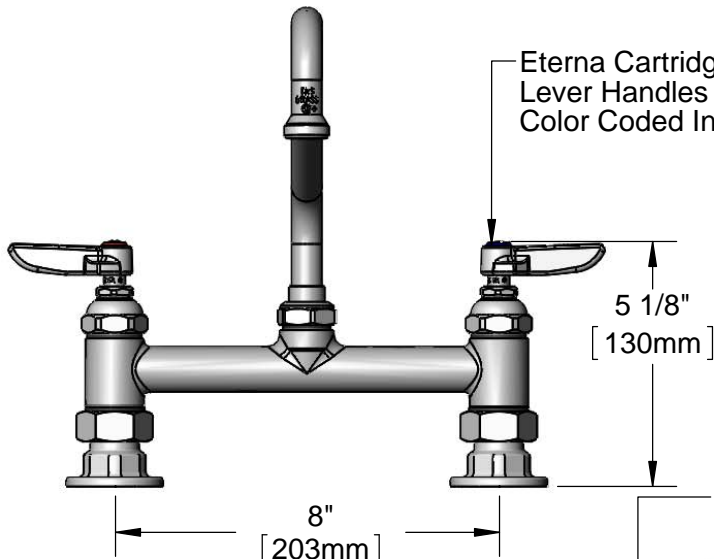
Architect/Engineer _____



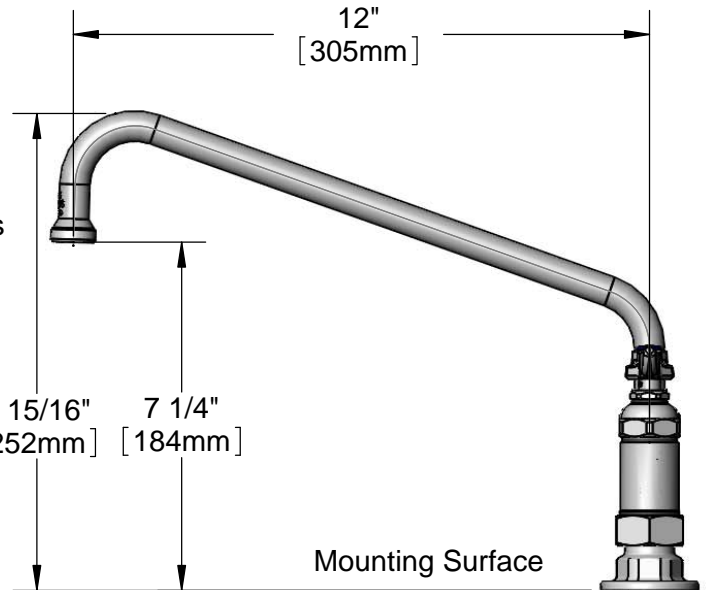
ADA Compliant



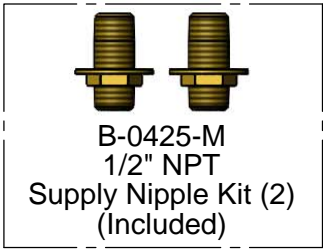
062X
Swing Nozzle w/
Stream Regulator
Outlet



Eterna Cartridges &
Lever Handles w/
Color Coded Indexes



8"
[203mm]
Adjustable From
7 3/4" to 8 1/4"
[197mm to 210mm]



Mounting Surface

Ø 2" [51mm]
Flanges w/
1/2" NPT
Female Inlets

Rough-In Requirement:
(2) Ø 1" [25mm] Mounting Holes

Product Specifications:

8" Deck Mount Mixing Faucet, Eterna Cartridges, Lever Handles,
12" Swing Nozzle w/ Stream Regulator Outlet & 1/2" NPT Female Inlets

Product Compliance:

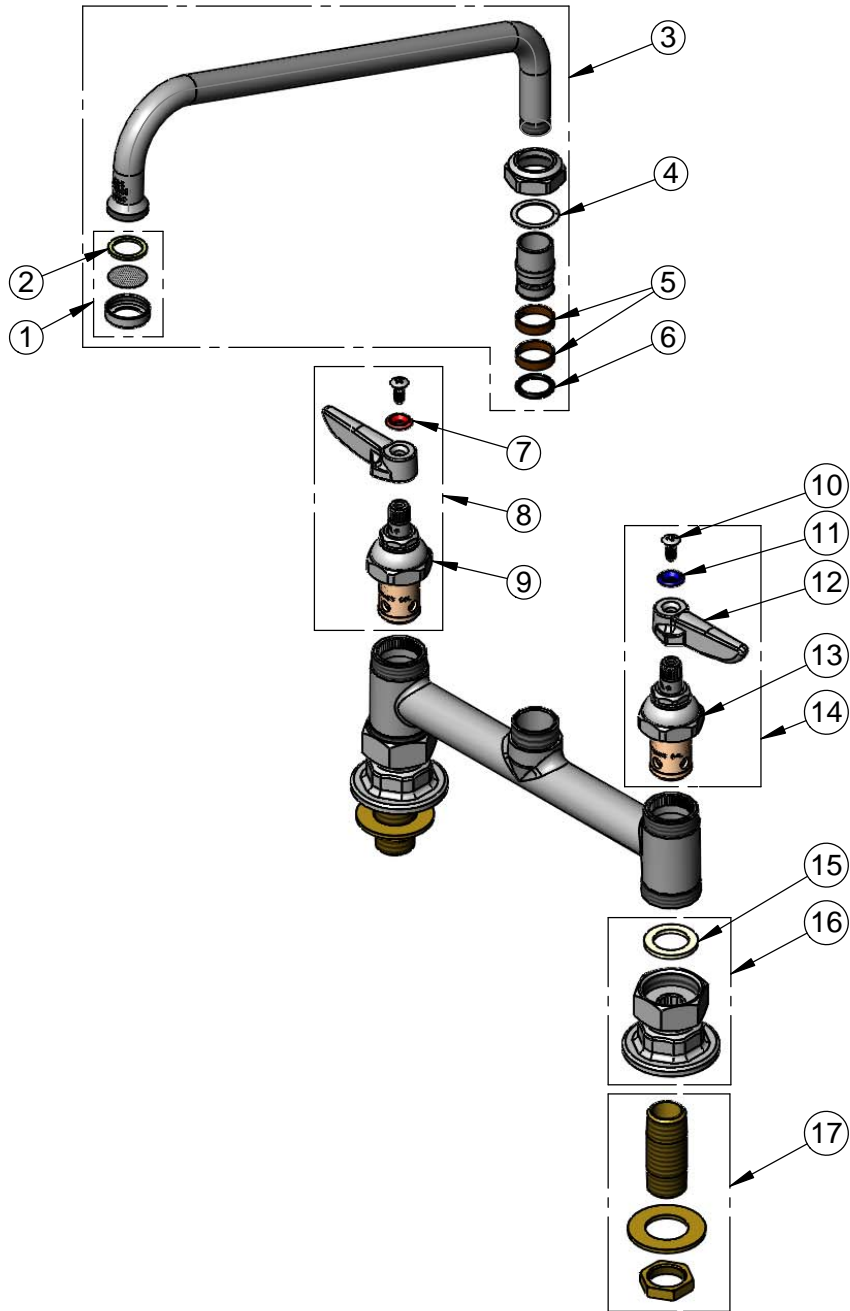
ASME A112.18.1 / CSA B125.1
NSF 61 - Section 9
NSF 372 (Low Lead Content)
ANSI A117.1 (ADA)



T&S BRASS AND BRONZE WORKS, INC.
 2 Saddleback Cove / P.O. Box 1088
 Travelers Rest, SC 29690

Model No.
B-2280
 Item No.

Travelers Rest, SC: 800-476-4103 • Simi Valley, CA: 800-423-0150 • Fax: 864-834-3518 • www.tsbrass.com



| ITEM NO. | SALES NO. | DESCRIPTION |
|----------|-----------|--|
| 1 | B-PT | Stream Regulator Outlet |
| 2 | 001048-45 | Nozzle Tip Washer |
| 3 | 062X | 12 Swing Nozzle |
| 4 | 009538-45 | Swivel Washer |
| 5 | 011429-45 | Swivel Sleeves (2) |
| 6 | 001074-45 | O-Ring |
| 7 | 001661-45 | Red Index-HW |
| 8 | 002714-40 | Eterna Cartridge, RTC w/ Handle, Index & Screw |
| 9 | 005960-40 | Eterna Cartridge - RTC |
| 10 | 000922-45 | Lever Handle Screw |
| 11 | 001660-45 | Blue Index-CW |
| 12 | 001638-45 | Lever Handle |
| 13 | 005959-40 | Eterna Cartridge - LTC |
| 14 | 002713-40 | Eterna Cartridge, LTC w/ Handle, Index & Screw |
| 15 | 001019-45 | Coupling Nut Washer |
| 16 | 00AA | 1/2" NPT Female Eccentric Flange |
| 17 | B-0425-M | 1/2" NPT Male Supply Nipple Kit (2) |

Product Specifications:
 8" Deck Mount Mixing Faucet, Eterna Cartridges, Lever Handles,
 12" Swing Nozzle w/ Stream Regulator Outlet & 1/2" NPT Female Inlets

Product Compliance:
 ASME A112.18.1 / CSA B125.1
 NSF 61 - Section 9
 NSF 372 (Low Lead Content)
 ANSI A117.1 (ADA)