



**T&S BRASS AND BRONZE WORKS, INC.**  
 2 Saddleback Cove / P.O. Box 1088  
 Travelers Rest, SC 29690

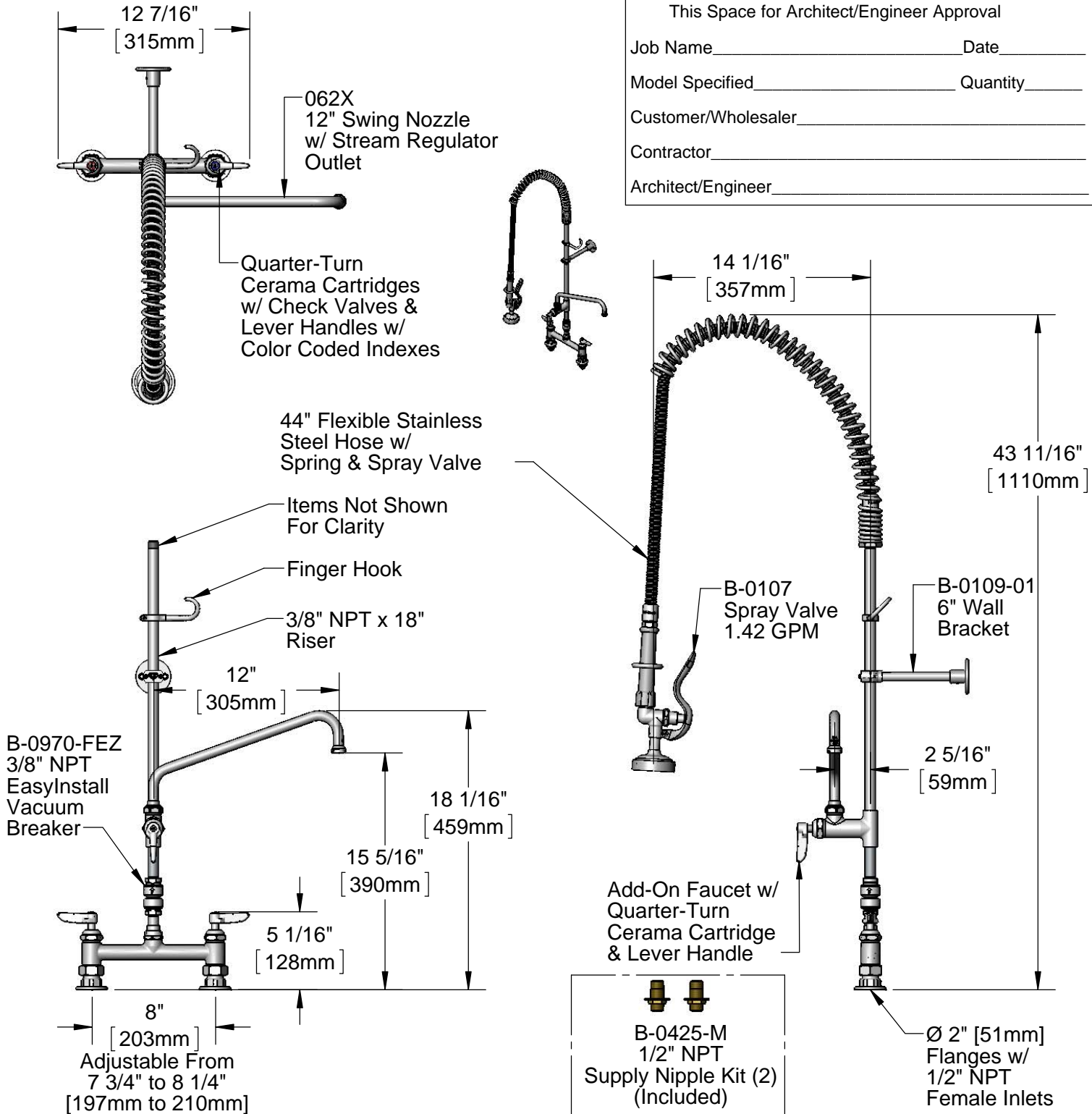
Model No.  
**B-2277-01-CR**

Item No.

Travelers Rest, SC: 800-476-4103 • Simi Valley, CA: 800-423-0150 • Fax: 864-834-3518 • www.tsbrass.com

This Space for Architect/Engineer Approval

Job Name \_\_\_\_\_ Date \_\_\_\_\_  
 Model Specified \_\_\_\_\_ Quantity \_\_\_\_\_  
 Customer/Wholesaler \_\_\_\_\_  
 Contractor \_\_\_\_\_  
 Architect/Engineer \_\_\_\_\_



**Product Specifications:**  
 EasyInstall Pre-Rinse Unit:  
 8" Deck Mount Mixing Faucet, Quarter-Turn Cerama Cartridges w/ Check Valves, Lever Handle, Vacuum Breaker, Add-On Faucet w/ Quarter-Turn Cerama Cartridge, 18" Riser, 6" Wall Bracket, 44" Flexible Stainless Steel Hose, 1.42 GPM Spray Valve, 12" Swing Nozzle, & 1/2" NPT Female Inlets

**Product Compliance:**  
 ASME A112.18.1 / CSA B125.1  
 NSF 61 - Section 9  
 NSF 372 (Low Lead Content)  
 EPA Act 2005 (PRSV)  
 CSA B64.8 (VB)



# T&S BRASS AND BRONZE WORKS, INC.

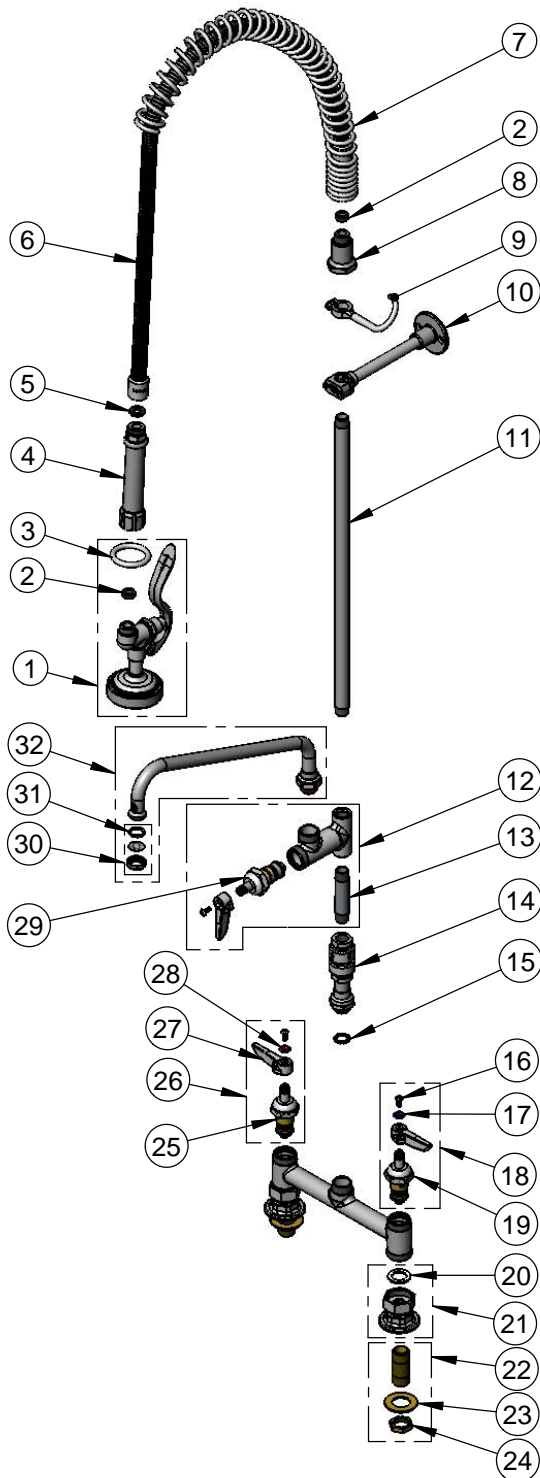
2 Saddleback Cove / P.O. Box 1088  
Travelers Rest, SC 29690

Model No.

**B-2277-01-CR**

Item No.

Travelers Rest, SC: 800-476-4103 • Simi Valley, CA: 800-423-0150 • Fax: 864-834-3518 • www.tsbrass.com



| ITEM NO. | SALES NO.    | DESCRIPTION   |
|----------|--------------|---|
| 1        | B-0107       | 1.42 GPM Spray Valve  |
| 2        | 010476-45    | #27 Washer  |
| 3        | 000907-45    | Spray Valve Hold Down Ring  |
| 4        | 002987-40    | Gray Handle Grip  |
| 5        | 001014-45    | Washer, B-0100 Hose Barrel  |
| 6        | B-0044-H2A   | 44" Flexible Stainless Steel Hose (Less Handle)                             |
| 7        | 000888-45    | EasyInstall Overhead Spring   |
| 8        | 000821-40    | Spring Body   |
| 9        | 004R         | Finger Hook   |
| 10       | B-0109-01    | 6" Wall Bracket   |
| 11       | 000369-40    | 3/8" NPT x 18" Riser  |
| 12       | B-0155-CR-LN | Add-On Faucet w/ Quarter-Turn Cerama Cartridge & Lever Handle (Less Nozzle) |
| 13       | 000358-40    | 3/8" NPT x 3" Riser   |
| 14       | B-0970-FEZ   | 3/8" NPT EasyInstall Vacuum Breaker   |
| 15       | 014200-45    | Star Washer, Anti-Rotation  |
| 16       | 000922-45    | Lever Handle Screw  |
| 17       | 001660-45    | Blue Index-CW   |
| 18       | 012447-25    | Quarter-Turn Cerama Cartridge, LTC w/ Check Valve, Handle, Index & Screw    |
| 19       | 012395-25    | Quarter-Turn Cerama Cartridge, LTC w/ Check Valve                           |
| 20       | 001019-45    | Coupling Nut Washer   |
| 21       | 00AA         | 1/2" NPT Female Eccentric Flange  |
| 22       | B-0425-M     | 1/2" NPT Supply Nipple Kit (2)  |
| 23       | 000999-45    | Brass Lock Washer   |
| 24       | 002954-45    | Shank Lock Nut  |
| 25       | 012394-25    | Quarter-Turn Cerama Cartridge, RTC w/ Check Valve                           |
| 26       | 012446-25    | Quarter-Turn Cerama Cartridge, RTC w/ Check Valve, Handle, Index & Screw    |
| 27       | 001638-45    | Lever Handle  |
| 28       | 001661-45    | Red Index-HW  |
| 29       | 011278-25    | Quarter-Turn Cerama Cartridge, RTC  |
| 30       | B-PT         | Stream Regulator Outlet   |
| 31       | 001048-45    | Nozzle Tip Washer   |
| 32       | 062X         | 12" Swing Nozzle w/ Stream Regulator Outlet                                 |

**Product Specifications:**

EasyInstall Pre-Rinse Unit:  
8" Deck Mount Mixing Faucet, Quarter-Turn Cerama Cartridges w/ Check Valves, Lever Handle, Vacuum Breaker, Add-On Faucet w/ Quarter-Turn Cerama Cartridge, 18" Riser, 6" Wall Bracket, 44" Flexible Stainless Steel Hose, 1.42 GPM Spray Valve, 12" Swing Nozzle, & 1/2" NPT Female Inlets

**Product Compliance:**

ASME A112.18.1 / CSA B125.1  
NSF 61 - Section 9  
NSF 372 (Low Lead Content)  
EPA Act 2005 (PRSV)  
CSA B64.8 (VB)