



# T&S BRASS AND BRONZE WORKS, INC.

2 Saddleback Cove / P.O. Box 1088  
Travelers Rest, SC 29690

Model No.

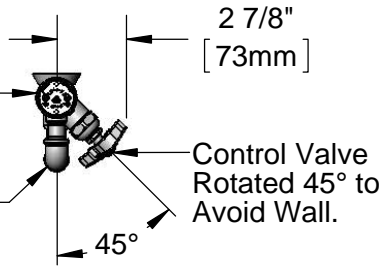
**B-0679**

Item No.

Travelers Rest, SC: 800-476-4103 • Simi Valley, CA: 800-423-0150 • Fax: 864-834-3518 • www.tsbrass.com

B-0968  
3/8" NPT  
Vacuum Breaker

Items Not  
Shown  
For Clarity



This Space for Architect/Engineer Approval

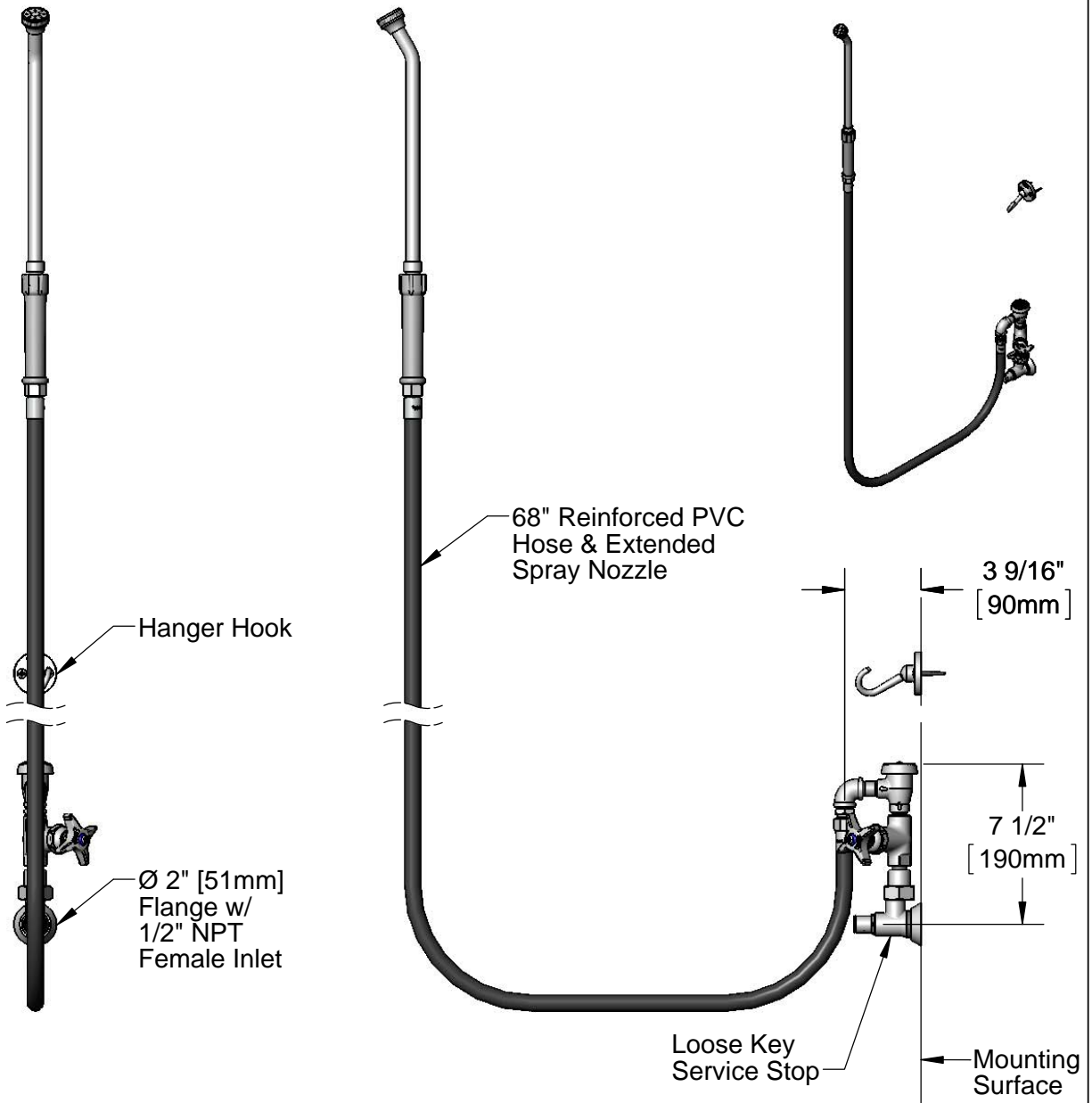
Job Name \_\_\_\_\_ Date \_\_\_\_\_

Model Specified \_\_\_\_\_ Quantity \_\_\_\_\_

Customer/Wholesaler \_\_\_\_\_

Contractor \_\_\_\_\_

Architect/Engineer \_\_\_\_\_



**Product Specifications:**

Bed Pan Washer, Loose Key Angled Stop, 3/8" NPT Vacuum Breaker, 4-Arm Handle, Extended Spray Nozzle & 1/2" NPT female Inlet

**Product Compliance:**

ASME A112.18.1 / CSA B125.1  
NSF 61 Exempt (Non-Potable)  
ASSE 1001 (VB)

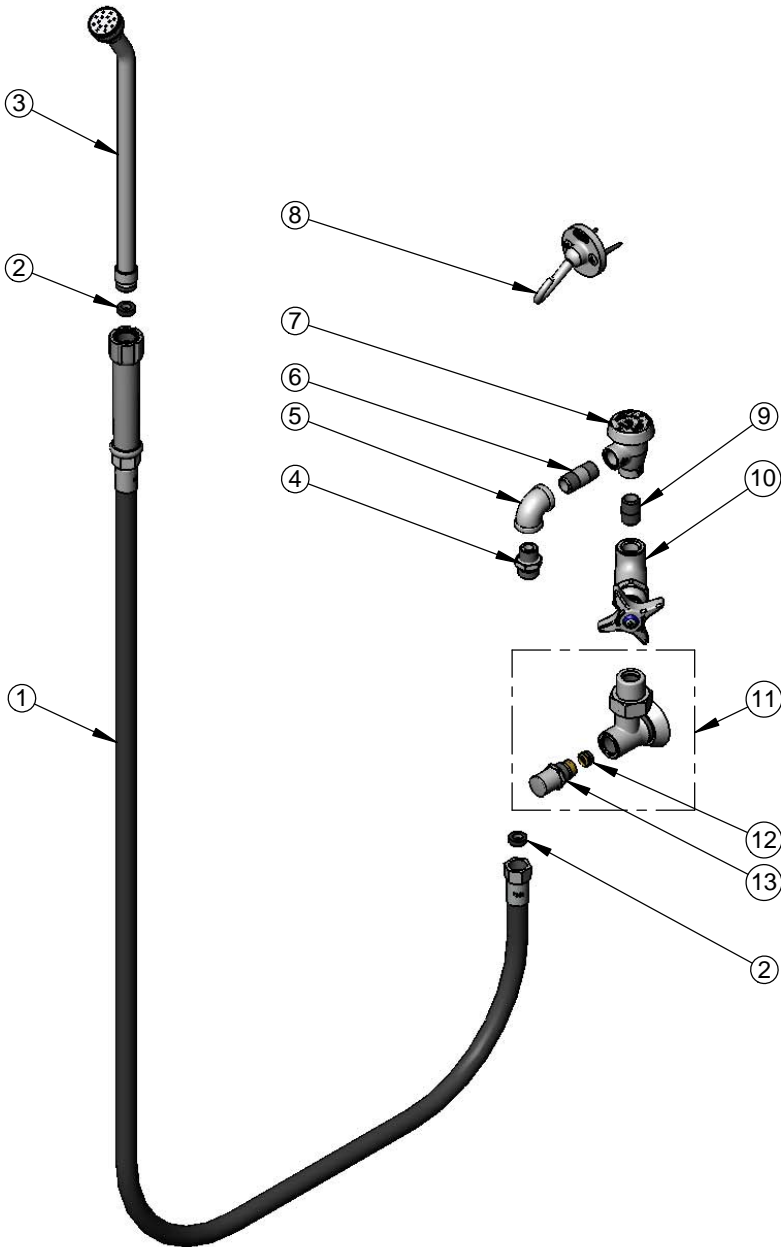


**T&S BRASS AND BRONZE WORKS, INC.**  
 2 Saddleback Cove / P.O. Box 1088  
 Travelers Rest, SC 29690

Model No.  
**B-0679**  
 Item No.

Travelers Rest, SC: 800-476-4103 • Simi Valley, CA: 800-423-0150 • Fax: 864-834-3518 • www.tsbrass.com

ITEM NO.	SALES NO.	DESCRIPTION
1	B-0068-R	68" Reinforced PVC Hose w/ Handle
2	010476-45	#27 Washer
3	002861-40	Bedpan Spray Nozzle
4	053A	Adapter, 3/8" NPT Male
5	001355-40	Elbow, 3/8 NPT
6	002341-40	3/8" NPT x 1 1/2" Nipple
7	B-0968	3/8" NPT Vacuum Breaker
8	B-0104-D	Dummy Wall Hook Bracket
9	002535-25	3/8" Close Nipple
10	007010-40	Straight Stop w/ 4-Arm Handle & Blue Index
11	B-1351	Loose Key, 1/2" NPT Angled Stop w/ Tee Handle & Screw
12	000763-20	Seat
13	166A	Service Stop Spindle w/ Cap, Handle & Screw



**Product Specifications:**

Bed Pan Washer, Loose Key Angled Stop, 3/8" NPT Vacuum Breaker, 4-Arm Handle, Extended Spray Nozzle & 1/2" NPT female Inlet

**Product Compliance:**

ASME A112.18.1 / CSA B125.1  
 NSF 61 Exempt (Non-Potable)  
 ASSE 1001 (VB)