



T&S BRASS AND BRONZE WORKS, INC.

2 Saddleback Cove / P.O. Box 1088
Travelers Rest, SC 29690

Model No.

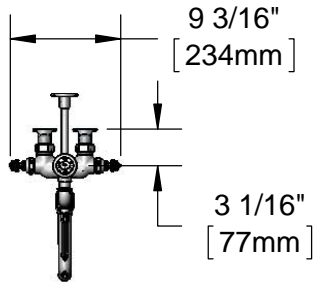
B-0491-01

Item No.

Travelers Rest, SC: 800-476-4103 • Simi Valley, CA: 800-423-0150 • Fax: 864-834-3518 • www.tsbrass.com



ADA Compliant



This Space for Architect/Engineer Approval

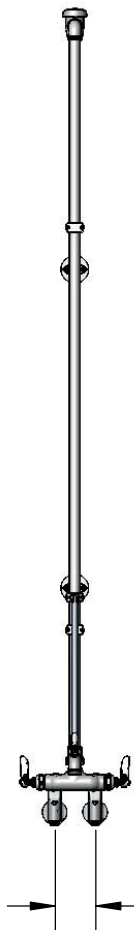
Job Name _____ Date _____

Model Specified _____ Quantity _____

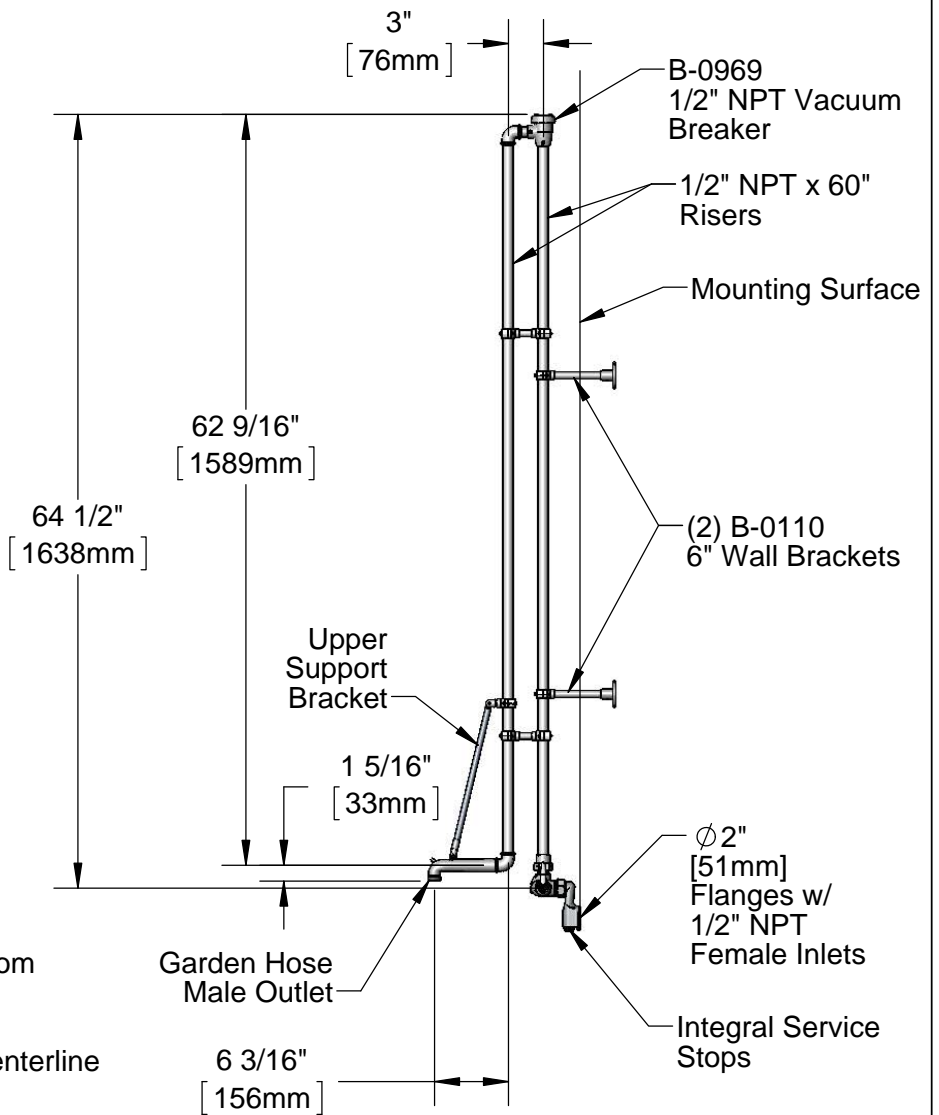
Customer/Wholesaler _____

Contractor _____

Architect/Engineer _____



Inlets Adjustable from
2 1/4" to 8 1/4"
[57mm to 210mm]
Below or Above Centerline



Product Specifications:

Wall Mount Service Sink Faucet, Eterna Cartridges, Lever Handles, Garden Hose Male Outlet, Integral Service Stops, Polished Chrome Finish, Elevated 1/2" NPT Vacuum Breaker, 6" Wall Brackets & 1/2" NPT Female Inlets

Product Compliance:

ASME A112.18.1 / CSA B125.1
NSF 61 - Section 9
NSF 372 (Low Lead Content)
ANSI A117.1 (ADA)
ASSE 1001 (VB)



T&S BRASS AND BRONZE WORKS, INC.

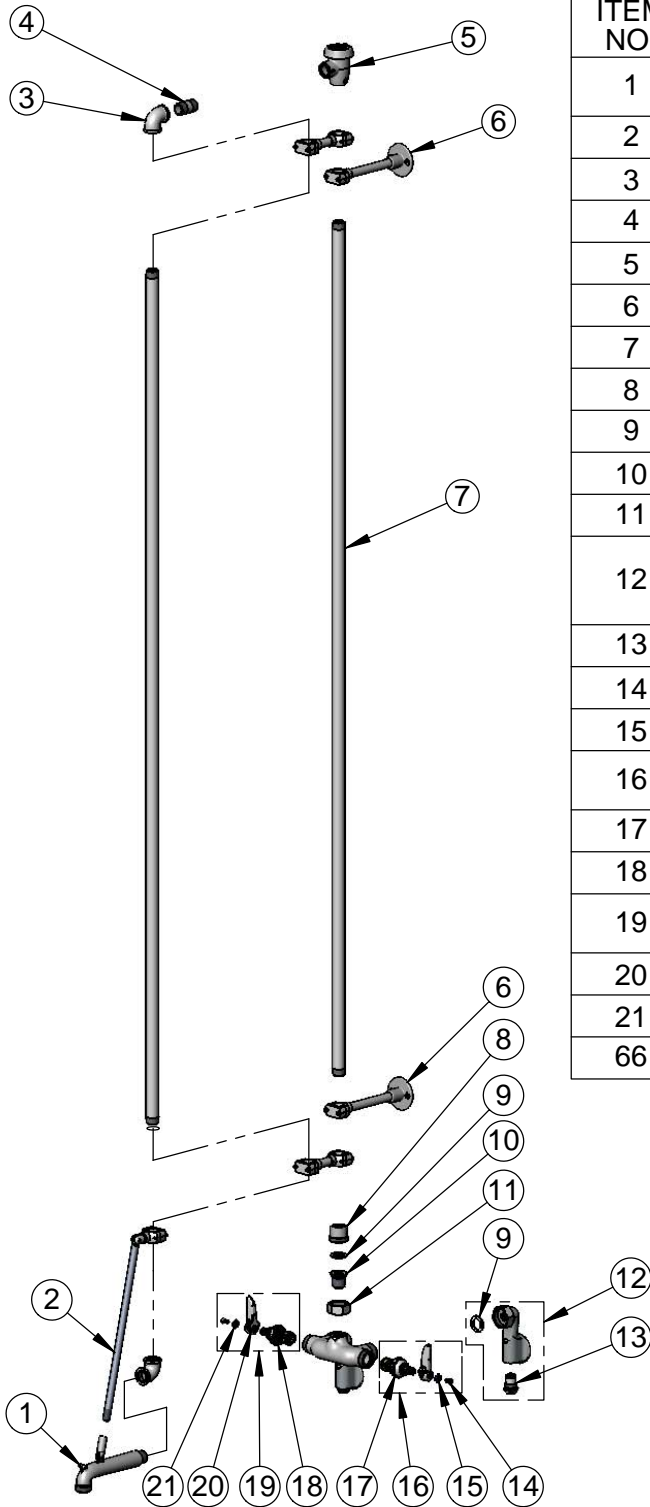
2 Saddleback Cove / P.O. Box 1088
Travelers Rest, SC 29690

Model No.

B-0491-01

Item No.

Travelers Rest, SC: 800-476-4103 • Simi Valley, CA: 800-423-0150 • Fax: 864-834-3518 • www.tsbrass.com



ITEM NO.	SALES NO.	DESCRIPTION
1	009545-40	Spout w/ Male GH Outlet & Upper Clevis, Polished Chrome
2	009541-40	Nozzle Upper Support
3	001357-40	Cast Elbow, 1/2"
4	001509-40	Nipple, 1/2" NPT X 1 1/2"
5	B-0969	1/2" NPT Vacuum Breaker
6	B-0110	6" Wall Bracket
7	001678-40	1/2" NPT x 60" Riser
8	000870-40	Male Half Union
9	001019-45	Coupling Nut Washer
10	000688-25	Insert, 1/2 NPT Male Union
11	000721-25	Flange Coupling Nut
12	00XX-POL	1/2" NPT Female Adjustable Arm Inlet w/ Integral Service Stop - Polished Chrome
13	163A	Built-in Service Stop
14	000922-45	Lever Handle Screw
15	001660-45	Blue Index-CW
16	002711-40	Eterna Cartridge, LTC w/ Spring Check, Handle, Index & Screw
17	012442-40	Eterna Cartridge, LTC w/ Spring Check
18	012443-40	Eterna Cartridge, RTC w/ Spring Check
19	002712-40	Eterna Cartridge, RTC w/ Spring Check, Handle, Index & Screw
20	001638-45	Lever Handle
21	001661-45	Red Index-HW
66		Bracket Assembly, 6" Wall

Product Specifications:

Wall Mount Service Sink Faucet, Eterna Cartridges, Lever Handles, Garden Hose Male Outlet, Integral Service Stops, Polished Chrome Finish, Elevated 1/2" NPT Vacuum Breaker, 6" Wall Brackets & 1/2" NPT Female Inlets

Product Compliance:

ASME A112.18.1 / CSA B125.1
NSF 61 - Section 9
NSF 372 (Low Lead Content)
ANSI A117.1 (ADA)
ASSE 1001 (VB)