



T&S BRASS AND BRONZE WORKS, INC.

2 Saddleback Cove / P.O. Box 1088
Travelers Rest, SC 29690

Model No.

B-0325-LN

Item No.

Travelers Rest, SC: 800-476-4103 • Simi Valley, CA: 800-423-0150 • Fax: 864-834-3518 • www.tsbrass.com



ADA Compliant

This Space for Architect/Engineer Approval

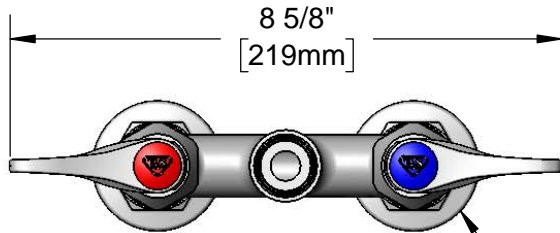
Job Name _____ Date _____

Model Specified _____ Quantity _____

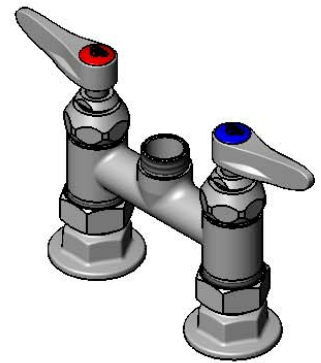
Customer/Wholesaler _____

Contractor _____

Architect/Engineer _____

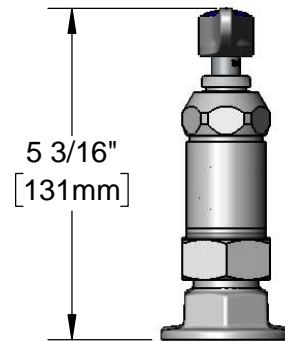
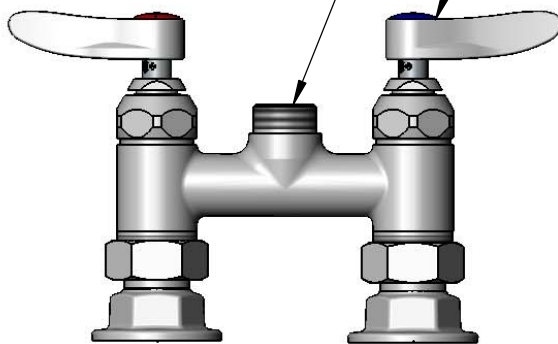


Ø 2" [51mm]
Flanges w/
1/2" NPT
Female Inlets



Swivel Outlet Accepts
Standard T&S Swing
Nozzles

Quarter-Turn
Eterna Cartridges w/
Spring Checks &
Lever Handles w/
Color Coded Indexes



4"
[102mm]

Adjustable From
3 3/4" to 4 1/4"
[95mm to 108mm]

Product Specifications:

4" Deck Mount Faucet, Quarter-Turn Eterna Cartridges w/ Spring Checks, Lever Handles & 1/2" NPT Female Inlets

Product Compliance:

ASME A112.18.1 / CSA B125.1
NSF 61 - Section 9
NSF 372 (Low Lead Content)
ANSI A117.1 (ADA)



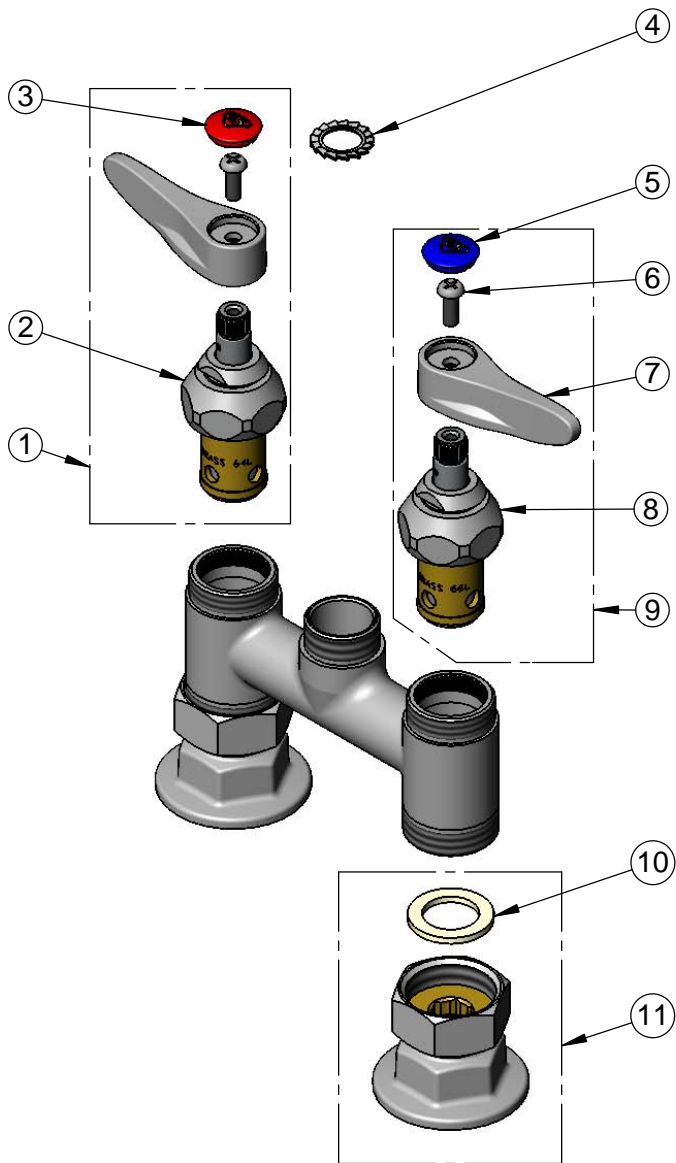
T&S BRASS AND BRONZE WORKS, INC.
 2 Saddleback Cove / P.O. Box 1088
 Travelers Rest, SC 29690

Model No.
B-0325-LN

Item No.

Travelers Rest, SC: 800-476-4103 • Simi Valley, CA: 800-423-0150 • Fax: 864-834-3518 • www.tsbrass.com

| ITEM NO. | SALES NO. | DESCRIPTION |
|----------|-------------|---|
| 1 | 012446-25NS | Quarter-Turn Cerama Cartridge w/ Check Valve, Handle, Red Index & Screw, RTC |
| 2 | 012394-25NS | Quarter-Turn Cerama Cartridge w/ Check Valve, RTC |
| 3 | 001193-19NS | Red Button Index, Press-in |
| 4 | 014200-45 | Star Washer, Anti-Rotation |
| 5 | 018506-19NS | Blue Button Index, Press-in |
| 6 | 000925-45 | Lab Handle Screw |
| 7 | 001638-45NS | Lever Handle (New Style) |
| 8 | 012395-25NS | Quarter-Turn Cerama Cartridge w/ Check Valve, LTC |
| 9 | 012447-25NS | Quarter-Turn Cerama Cartridge w/ Check Valve, Handle, Blue Index & Screw, LTC |
| 10 | 001019-45 | Coupling Nut Washer |
| 11 | 00AA | 1/2" NPT Female Eccentric Flange |



Product Specifications:
 4" Deck Mount Faucet, Quarter-Turn Eterna Cartridges w/ Spring Checks, Lever Handles & 1/2" NPT Female Inlets

Product Compliance:
 ASME A112.18.1 / CSA B125.1
 NSF 61 - Section 9
 NSF 372 (Low Lead Content)
 ANSI A117.1 (ADA)