



**T&S BRASS AND BRONZE WORKS, INC.**  
 2 Saddleback Cove / P.O. Box 1088  
 Travelers Rest, SC 29690

Model No.  
**B-0318-02**

Item No.

Travelers Rest, SC: 800-476-4103 • Simi Valley, CA: 800-423-0150 • Fax: 864-834-3518 • www.tsbrass.com

This Space for Architect/Engineer Approval

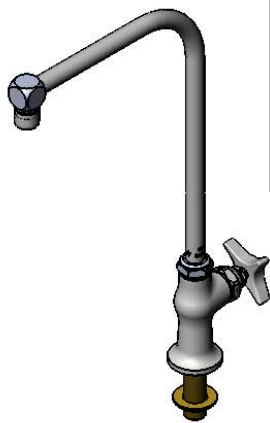
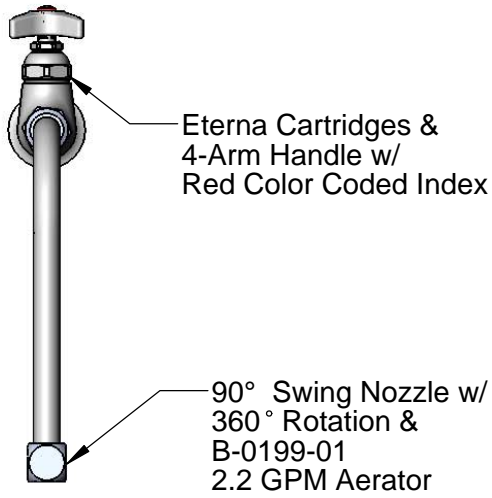
Job Name \_\_\_\_\_ Date \_\_\_\_\_

Model Specified \_\_\_\_\_ Quantity \_\_\_\_\_

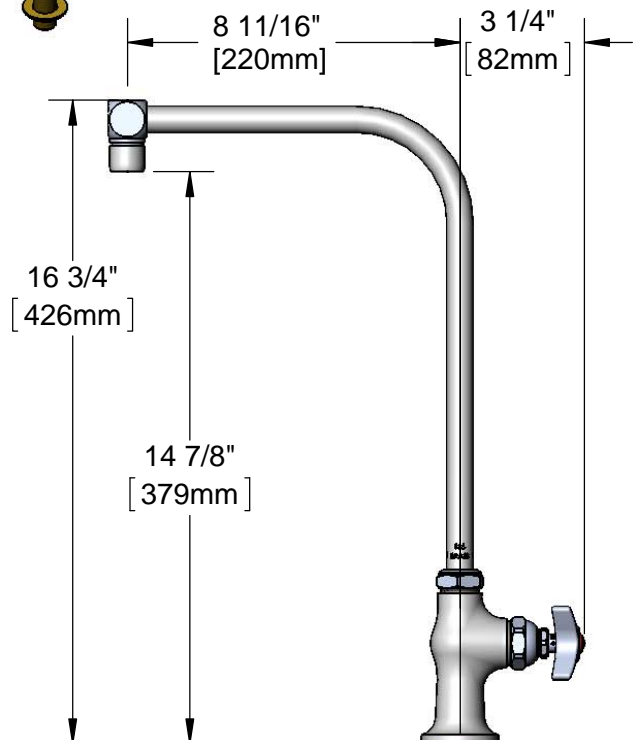
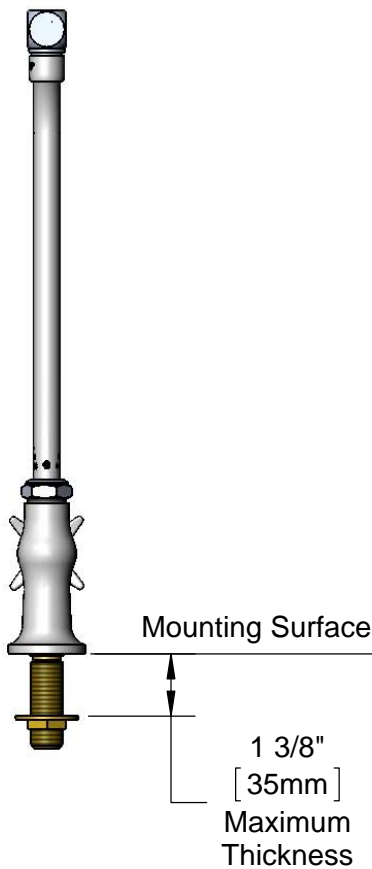
Customer/Wholesaler \_\_\_\_\_

Contractor \_\_\_\_\_

Architect/Engineer \_\_\_\_\_



**ADA Compliant**



150A Optional Tailpiece & Nut for 1/4" NPT Connection (Included)

1/2" NPSM Male Inlet

Rough-in Requirement:  
 Ø1" [25mm] Hole

Product Specifications:

Single Hole Single Temperature Deck Mount Faucet with Polished Chrome Plated Brass Body, 8 11/16" 90° Swing Nozzle with 2.2 GPM Aerator, Eterna Cartridge, 4-Arm Handle and 1/2" NPSM Male Inlet

Product Compliance:

ASME A112.18.1 / CSA B125.1  
 NSF 61 - Section 9  
 NSF 372 (Low Lead Content)  
 ANSI A117.1 (ADA)



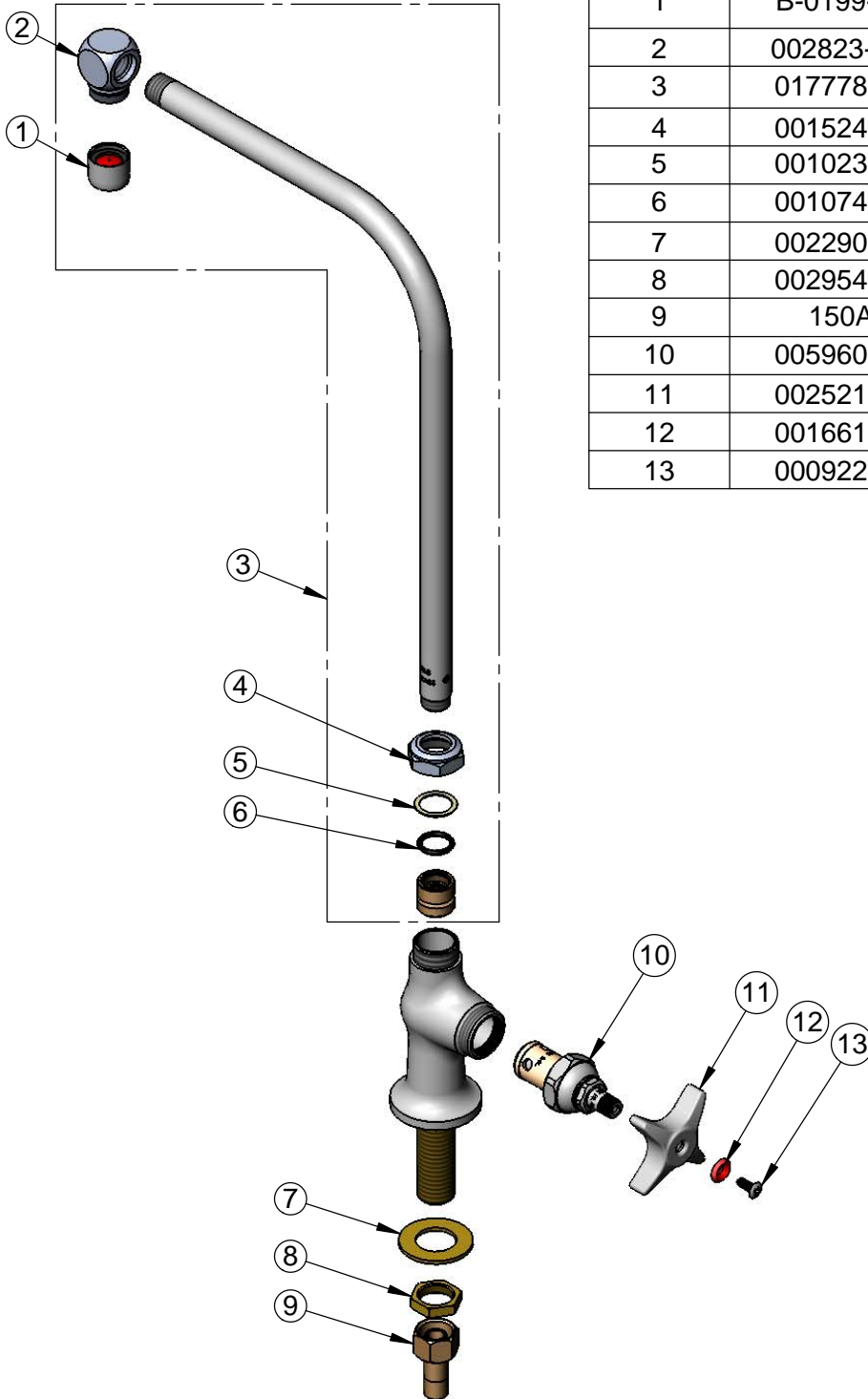
**T&S BRASS AND BRONZE WORKS, INC.**  
 2 Saddleback Cove / P.O. Box 1088  
 Travelers Rest, SC 29690

Model No.  
**B-0318-02**

Item No.

Travelers Rest, SC: 800-476-4103 • Simi Valley, CA: 800-423-0150 • Fax: 864-834-3518 • www.tsbrass.com

ITEM NO.	SALES NO.	DESCRIPTION
1	B-0199-01	2.2 GPM Aerator, 55/64"-27 UN Female
2	002823-40	Cube
3	017778-40	90° Swing Nozzle
4	001524-40	Swivel Nut
5	001023-45	Swivel Binding Washer
6	001074-45	O-Ring
7	002290-45	Lock Washer
8	002954-45	Shank Lock Nut
9	150A	1/4" NPT Tailpiece & Nut
10	005960-40	Eterna Cartridge, RTC
11	002521-45	4-Arm Handle
12	001661-45	Red Index-HW
13	000922-45	Lever Handle Screw



**Product Specifications:**

Single Hole Single Temperature Deck Mount Faucet with Polished Chrome Plated Brass Body, 8 11/16" 90° Swing Nozzle with 2.2 GPM Aerator, Eterna Cartridge, 4-Arm Handle and 1/2" NPSM Male Inlet

**Product Compliance:**

ASME A112.18.1 / CSA B125.1  
 NSF 61 - Section 9  
 NSF 372 (Low Lead Content)  
 ANSI A117.1 (ADA)