



T&S BRASS AND BRONZE WORKS, INC.

2 Saddleback Cove / P.O. Box 1088
Travelers Rest, SC 29690

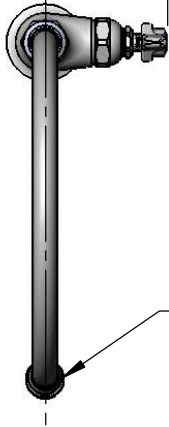
Model No.

B-0304

Item No.

Travelers Rest, SC: 800-476-4103 • Simi Valley, CA: 800-423-0150 • Fax: 864-834-3518 • www.tsbrass.com

3 3/16"
[81mm]



Swivel Gooseneck w/
B-0199-07
2.2 GPM
Vandal Resistant
Aerator



ADA Compliant

This Space for Architect/Engineer Approval

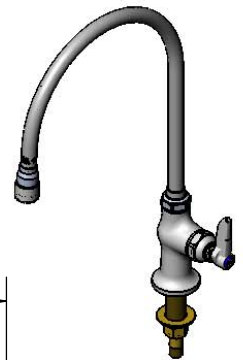
Job Name _____ Date _____

Model Specified _____ Quantity _____

Customer/Wholesaler _____

Contractor _____

Architect/Engineer _____



Eterna Cartridge &
Lever Handle w/
VR Screw & Color
Coded Index (CW)

2 5/8"
[67mm]

Mounting Surface

2 7/16"
[62mm]

Ø 2" [51mm] Flange
w/ 1/2" NPSM Shank

15 11/16"
[398mm]

8 13/16"
[224mm]

150A
Optional Tailpiece &
Nut For 1/4" NPT
Connection
(Included)

1 5/8"
[41mm]
Maximum
Thickness

Rough-In Requirement:
Ø 1" [25mm] Mounting Hole

Product Specifications:

Single Hole Single Temperature Deck Mount Faucet, Vandal Resistant
Lever Handle, Swivel Gooseneck w/ 2.2 GPM Vandal Resistant Aerator
& 1/2" NPSM Male Inlet

Product Compliance:

ASME A112.18.1 / CSA B125.1
NSF 61 - Section 9
NSF 372 (Low Lead Content)
ANSI A117.1 (ADA)

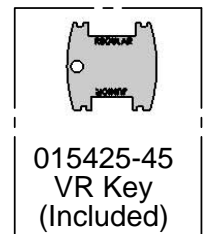
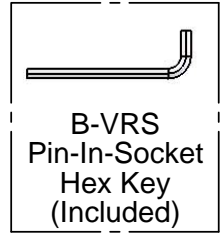
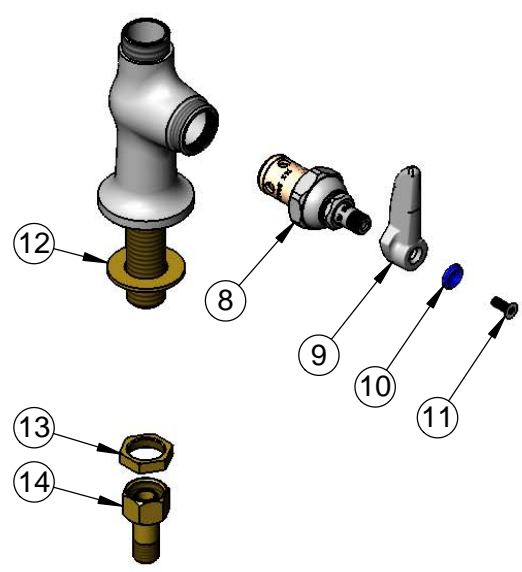
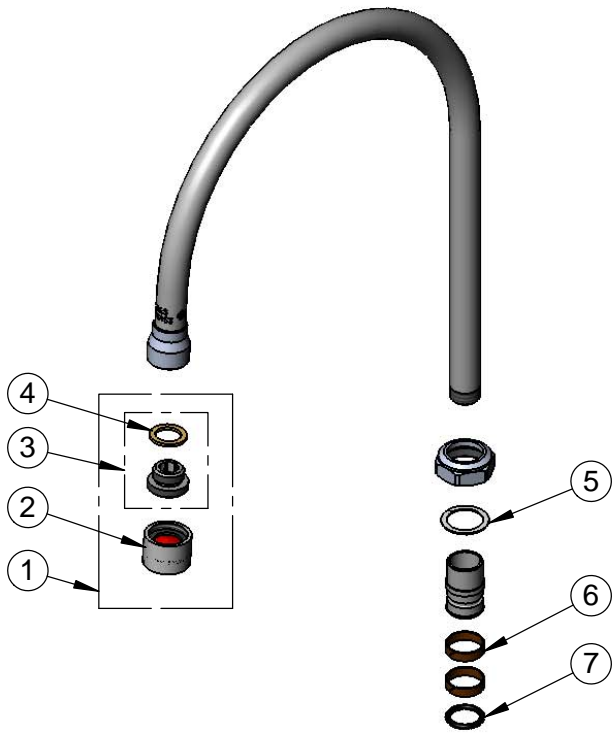


T&S BRASS AND BRONZE WORKS, INC.
 2 Saddleback Cove / P.O. Box 1088
 Travelers Rest, SC 29690

Model No.
B-0304
 Item No.

Travelers Rest, SC: 800-476-4103 • Simi Valley, CA: 800-423-0150 • Fax: 864-834-3518 • www.tsbrass.com

ITEM NO.	SALES NO.	DESCRIPTION
1	B-0199-07	VR 2.2 GPM Aerator, 3/8" NPSM Male w/ Key
2	B-0199-06	VR 2.2 GPM Aerator w/ Key
3	044A	Adapter w/ Washer For B-0199-02 Aerator
4	001043-45	Washer
5	009538-45	Swivel Washer
6	011429-45	Swivel Sleeves (2)
7	001074-45	O-Ring
8	005960-40	Eterna Cartridge, RTC
9	001638-45	Lever Handle
10	001660-45	Blue Index-CW
11	B-VRS	Pin-In-Socket Screw w/ Hex Key
12	000999-45	Brass Lock Washer
13	002954-45	Shank Lock Nut
14	150A	1/4" NPT Tailpiece & Nut



Product Specifications:
 Single Hole Single Temperature Deck Mount Faucet, Vandal Resistant
 Lever Handle, Swivel Gooseneck w/ 2.2 GPM Vandal Resistant Aerator
 & 1/2" NPSM Male Inlet

Product Compliance:
 ASME A112.18.1 / CSA B125.1
 NSF 61 - Section 9
 NSF 372 (Low Lead Content)
 ANSI A117.1 (ADA)