



T&S BRASS AND BRONZE WORKS, INC.

2 Saddleback Cove / P.O. Box 1088
Travelers Rest, SC 29690

Model No.

B-0296

Item No.

Travelers Rest, SC: 800-476-4103 • Simi Valley, CA: 800-423-0150 • Fax: 864-834-3518 • www.tsbrass.com



ADA Compliant

This Space for Architect/Engineer Approval

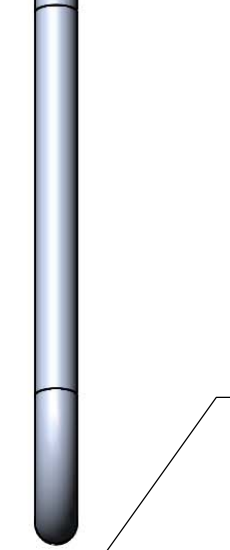
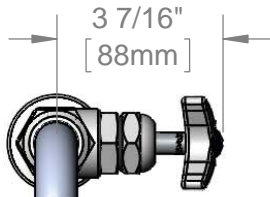
Job Name _____ Date _____

Model Specified _____ Quantity _____

Customer/Wholesaler _____

Contractor _____

Architect/Engineer _____



114X
Big-Flo 12" Swing Nozzle
w/ Plain End Outlet



Swivel
Joint

Big-Flo Cartridges &
4-Arm Handle w/
Blue Color Coded
Index

1 7/16"
[37mm]

2 9/16"
[65mm]

12 1/16"
[307mm]

8 7/16"
[214mm]

Mounting Surface

5/8"
[16mm]
Maximum
Thickness

Ø 2" [51mm]
Flange w/
1/2" NPT
Male Inlet

Rough-In Requirement:
(2) Ø 1" [25mm] Mounting Holes

Product Specifications:

Single Hole Single Temperature Faucet, 4-Arm Handle, Big-Flo
12" Swing Nozzle & 1/2" NPT Supply Nipple Kit

Product Compliance:

ASME A112.18.1 / CSA B125.1
NSF 61 - Section 9
NSF 372 (Low Lead Content)
ANSI A117.1 (ADA)



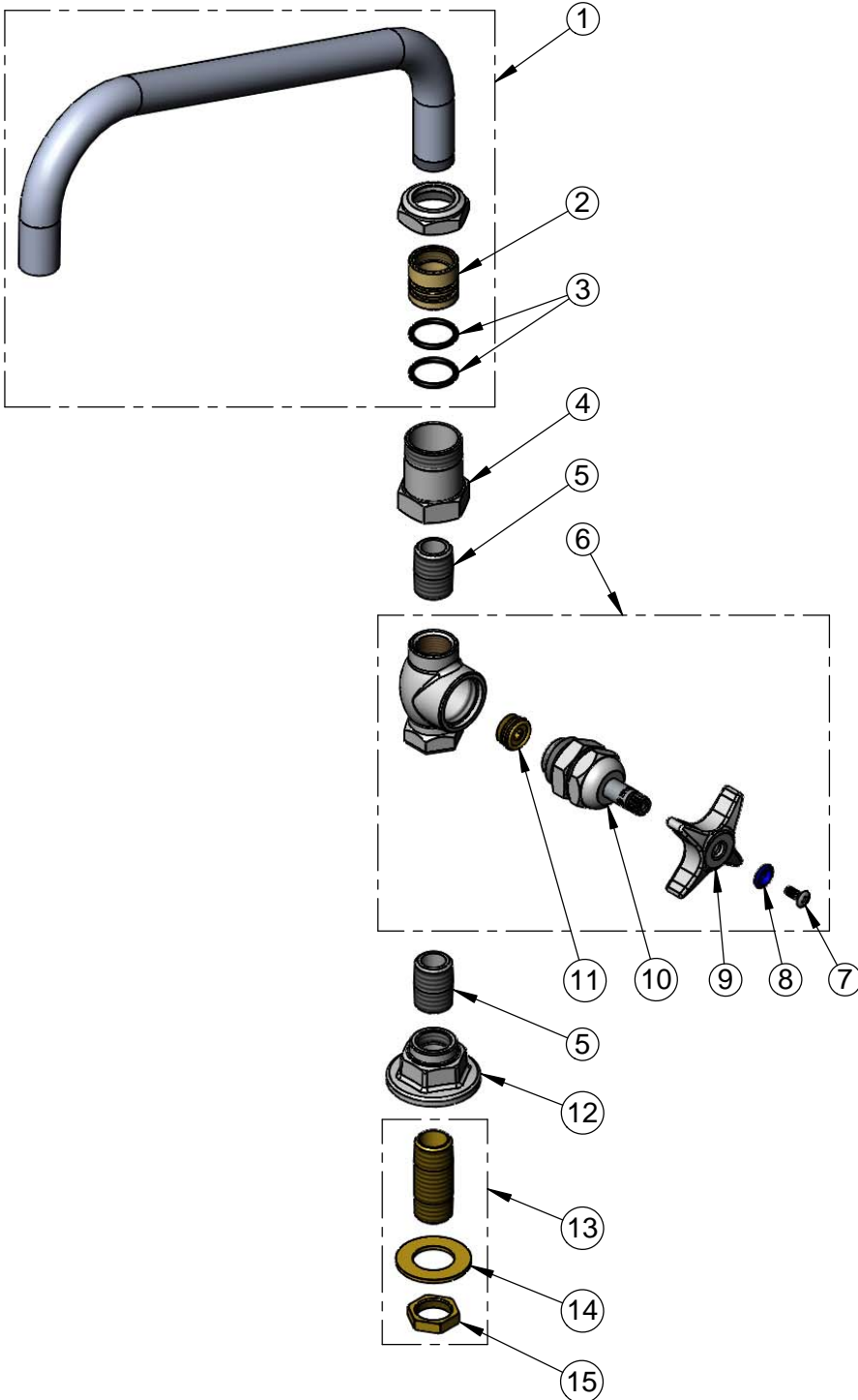
T&S BRASS AND BRONZE WORKS, INC.
 2 Saddleback Cove / P.O. Box 1088
 Travelers Rest, SC 29690

Model No.
B-0296

Item No.

Travelers Rest, SC: 800-476-4103 • Simi Valley, CA: 800-423-0150 • Fax: 864-834-3518 • www.tsbrass.com

ITEM NO.	SALES NO.	DESCRIPTION
1	114X	12" Big-Flo Swing Nozzle
2	000847-20	Swivel Piece
3	001068-45	O-ring
4	000594-25	Swivel Body x 1/2-14 NPT
5	002534-25	Close Nipple, 1/2" NPT
6	002900-40	Valve Assembly w/ 4-Arm Handle
7	000922-45	Lever Handle Screw
8	001660-45	Blue Index-CW
9	002521-45	4-Arm Handle
10	006482-40	Big-Flo Cartridge, RTC
11	000764-20	Seat, Big-Flo
12	000013-40	Flange, 1/2" NPT Wall Mount
13	B-0425	1/2" NPT Supply Nipple Kit
14	000999-45	Brass Lock Washer
15	002954-45	Shank Lock Nut



Product Specifications:
 Single Hole Single Temperature Faucet, 4-Arm Handle, Big-Flo
 12" Swing Nozzle & 1/2" NPT Supply Nipple Kit

Product Compliance:
 ASME A112.18.1 / CSA B125.1
 NSF 61 - Section 9
 NSF 372 (Low Lead Content)
 ANSI A117.1 (ADA)