



**T&S BRASS AND BRONZE WORKS, INC.**  
 2 Saddleback Cove / P.O. Box 1088  
 Travelers Rest, SC 29690

Model No.  
**B-0200-LN**

Item No.

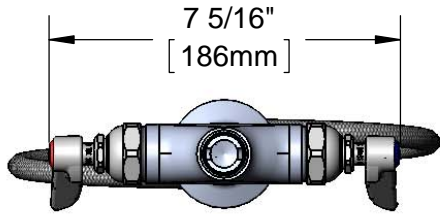
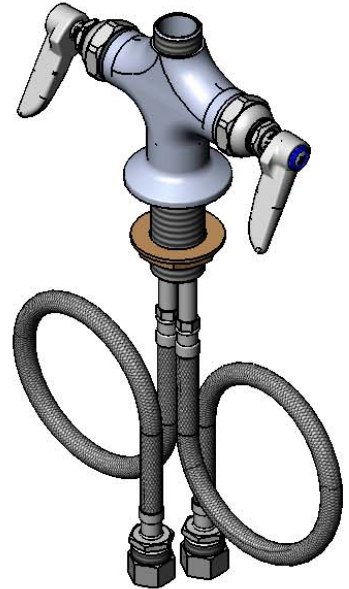
Travelers Rest, SC: 800-476-4103 • Simi Valley, CA: 800-423-0150 • Fax: 864-834-3518 • www.tsbrass.com

This Space for Architect/Engineer Approval

Job Name \_\_\_\_\_ Date \_\_\_\_\_  
 Model Specified \_\_\_\_\_ Quantity \_\_\_\_\_  
 Customer/Wholesaler \_\_\_\_\_  
 Contractor \_\_\_\_\_  
 Architect/Engineer \_\_\_\_\_



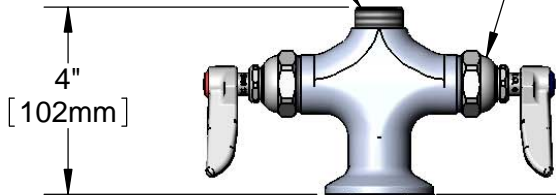
**ADA Compliant**



7 5/16"  
 [186mm]

Swivel Outlet Accepts  
 Standard T&S Swing  
 Nozzles

Eterna Cartridges &  
 Lever Handles w/  
 Color Coded Indexes

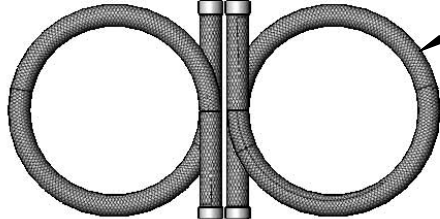


4"  
 [102mm]

Mounting Surface

Ø 2 1/4" [57mm] Flange w/  
 Ø 1 1/8" [29mm] Shank

18" Flexible  
 Stainless Steel  
 Supply Hoses



Compression Fittings  
 for 5/8" O.D. Copper Tubing  
 (Remove Compression Nut  
 for 1/2" NPSM Male)



2 5/16"  
 [58mm]

1 3/8"  
 [35mm]  
 Maximum  
 Thickness

Rough-In Requirement:  
 Ø 1 1/2" [38mm] Mounting Hole

Product Specifications:  
 Single Hole Deck Mount Mixing Faucet, Eterna Cartridges, Lever  
 Handles & 18" Flexible Stainless Steel Supply Hoses w/  
 1/2" NPSM Male Inlet, Less Nozzle

Product Compliance:  
 ASME A112.18.1 / CSA B125.1  
 NSF 61 - Section 9  
 NSF 372 (Low Lead Content)  
 ANSI A117.1 (ADA)



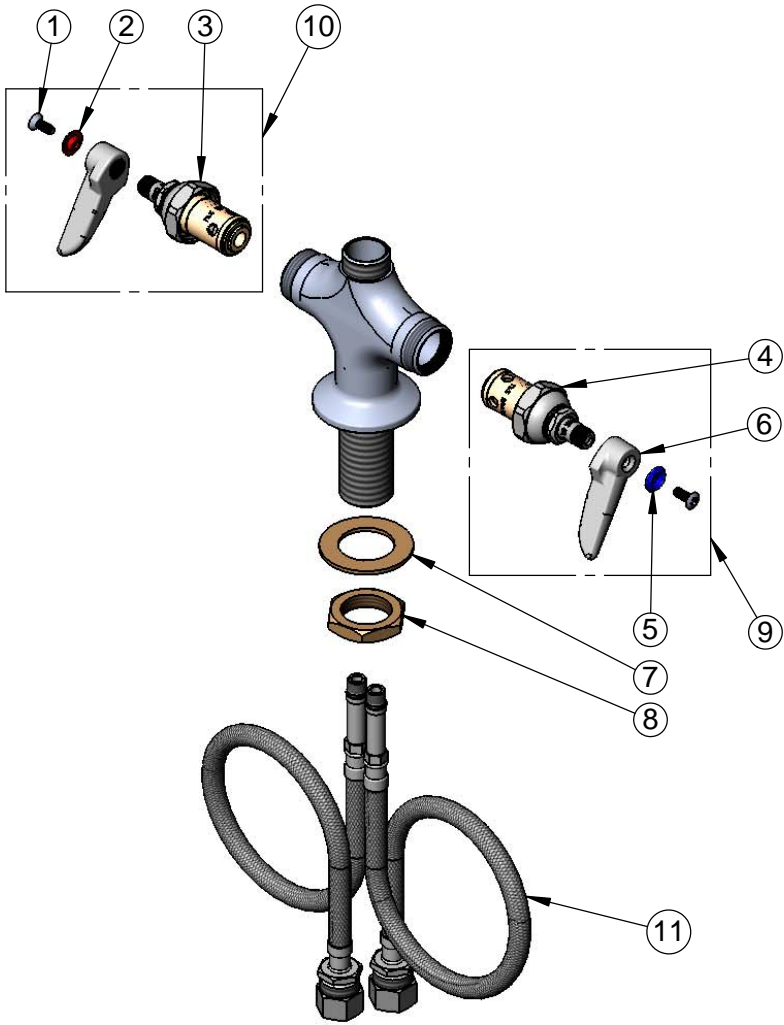
**T&S BRASS AND BRONZE WORKS, INC.**  
 2 Saddleback Cove / P.O. Box 1088  
 Travelers Rest, SC 29690

Model No.  
**B-0200-LN**

Item No.

Travelers Rest, SC: 800-476-4103 • Simi Valley, CA: 800-423-0150 • Fax: 864-834-3518 • www.tsbrass.com

ITEM NO.	SALES NO.	DESCRIPTION
1	000922-45	Lever Handle Screw
2	001661-45	Red Index-HW
3	005960-40	Eterna Cartridge, RTC
4	005959-40	Eterna Cartridge, LTC
5	001660-45	Blue Index-CW
6	001638-45	Lever Handle
7	002290-45	Lock Washer
8	000965-45	Lock Nut
9	002713-40	Eterna Cartridge LTC w/ Handle, Index & Screw
10	002714-40	Eterna Cartridge RTC w/ Handle, Index & Screw
11	012534-45	18" Flexible Supply Hose (2)



**Product Specifications:**

Single Hole Deck Mount Mixing Faucet, Eterna Cartridges, Lever Handles & 18" Flexible Stainless Steel Supply Hoses w/ 1/2" NPSM Male Inlet, Less Nozzle

**Product Compliance:**

ASME A112.18.1 / CSA B125.1  
 NSF 61 - Section 9  
 NSF 372 (Low Lead Content)  
 ANSI A117.1 (ADA)