



T&S BRASS AND BRONZE WORKS, INC.

2 Saddleback Cove / P.O. Box 1088
Travelers Rest, SC 29690

Model No.

B-0133-QD-1

Item No.

Travelers Rest, SC: 800-476-4103 • Simi Valley, CA: 800-423-0150 • Fax: 864-834-3518 • www.tsbrass.com

This Space for Architect/Engineer Approval

Job Name _____ Date _____

Model Specified _____ Quantity _____

Customer/Wholesaler _____

Contractor _____

Architect/Engineer _____

| Parts Needed | QTY |
|---------------------------|-----|
| 1. 010476-45 Hose Washer | 3 |
| 2. 146X Coupling | 1 |
| 3. 053A Adapter | 2 |
| 4. AW-5B Quick-Disconnect | 1 |

Existing Fisher Flexible Hose

Place Washers into Each Side of 146X Coupling & Thread Coupling onto Hose

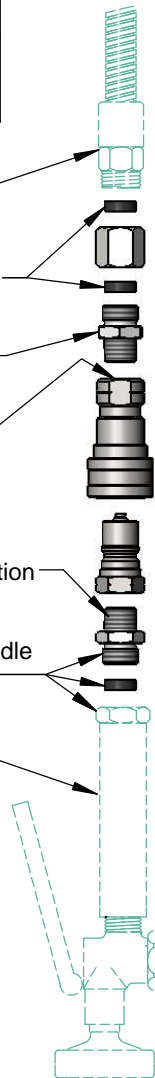
Screw 053A Adapter into 164X Coupling

Loctite Quick-Disconnect Section to 053A Adapter

Loctite 053A Adapter into Quick-Disconnect Plug Section

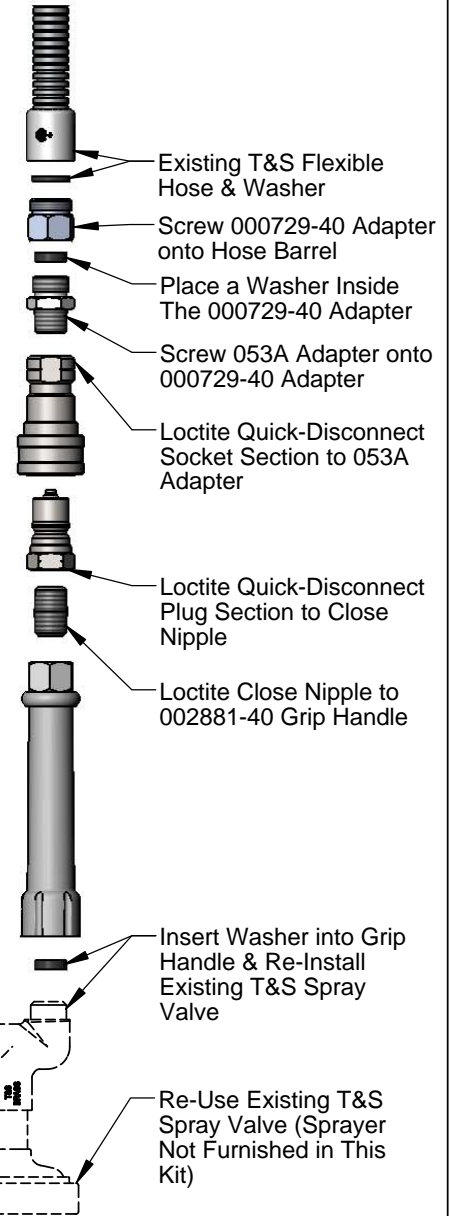
Place Washer into Fisher Spray Handle & Screw Handle & 053A Adapter Together

Re-Use Existing Fisher Spray Valve & Handle



To Retro-Fit a Fisher Pre-Rinse Unit

| Parts Needed | QTY |
|---------------------------|-----|
| 1. 0000729-40 Adapter | 1 |
| 2. 010476-45 Hose Washer | 2 |
| 3. 053A Adapter | 1 |
| 4. AW-5B Quick-Disconnect | 1 |
| 5. 002535-25 Close Nipple | 1 |
| 6. 002881-40 Gray Handle | 1 |



To Retro-Fit a T&S Pre-Rinse Unit

Product Specifications:
Quick-Disconnect Adapter Retro-Fit Kit for Existing Pre-Rinse Unit

Product Compliance:
ASME A112.18.1 / CSA B125.1
NSF 61 - Section 9
NSF 372 (Low Lead Content)