



# T&S BRASS AND BRONZE WORKS, INC.

2 Saddleback Cove / P.O. Box 1088  
Travelers Rest, SC 29690

Model No.

**B-0101-ENP**

Item No.

Travelers Rest, SC: 800-476-4103 • Simi Valley, CA: 800-423-0150 • Fax: 864-834-3518 • www.tsbrass.com

This Space for Architect/Engineer Approval

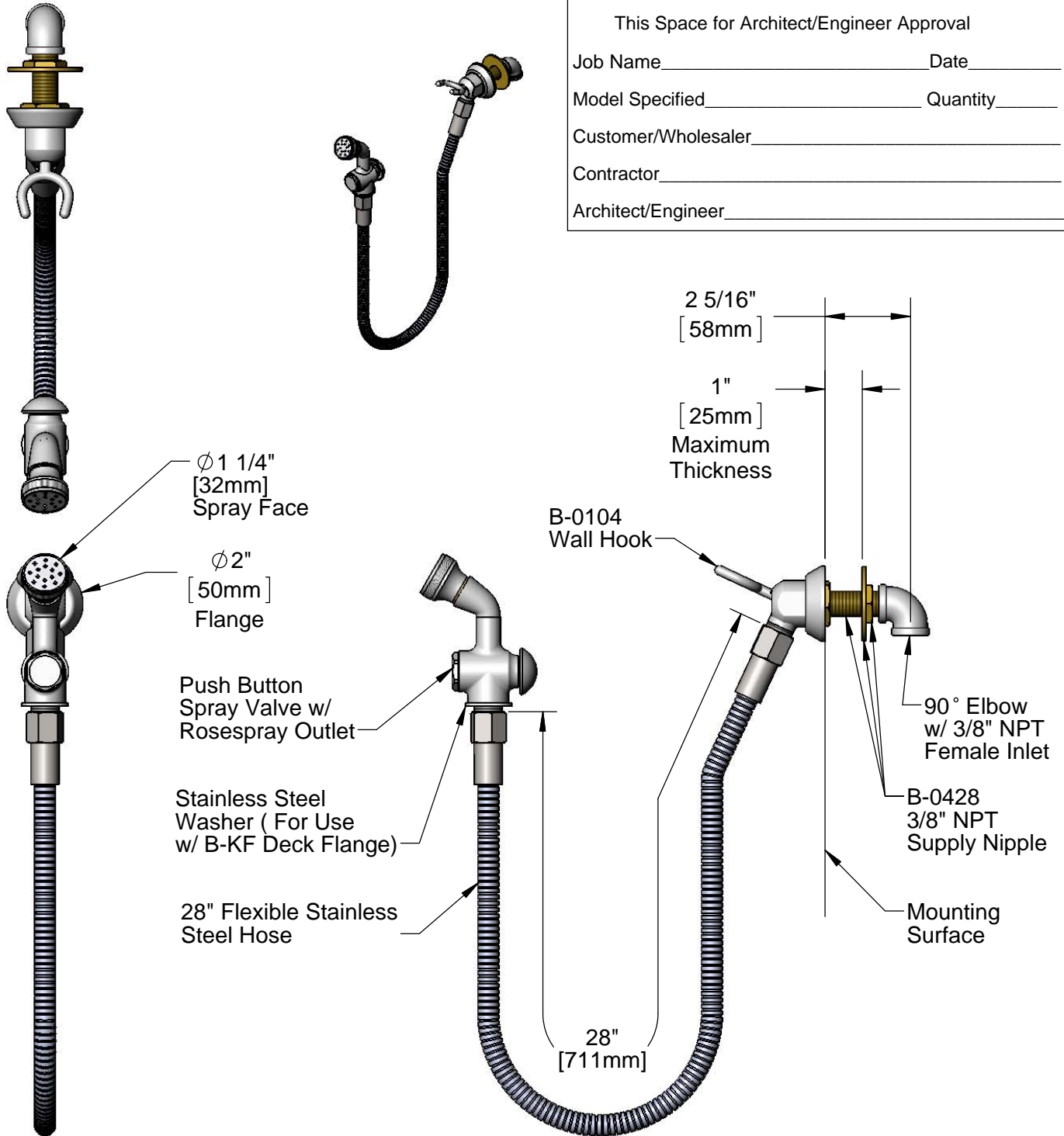
Job Name \_\_\_\_\_ Date \_\_\_\_\_

Model Specified \_\_\_\_\_ Quantity \_\_\_\_\_

Customer/Wholesaler \_\_\_\_\_

Contractor \_\_\_\_\_

Architect/Engineer \_\_\_\_\_



Rough-In Requirement:  
Ø 1" [25mm] Mounting Hole

Product Specifications:  
Spray Valve w/ 28" Flexible Stainless Steel Hose, Wall Hook,  
3/8" NPT Supply Nipple & 3/8" NPT Elbow

Product Compliance:  
ASME A112.18.1 / CSA B125.1  
NSF 61 - Section 9  
NSF 372 (Low Lead Content)  
EPA 2005 Non-Compliant (PRSV)



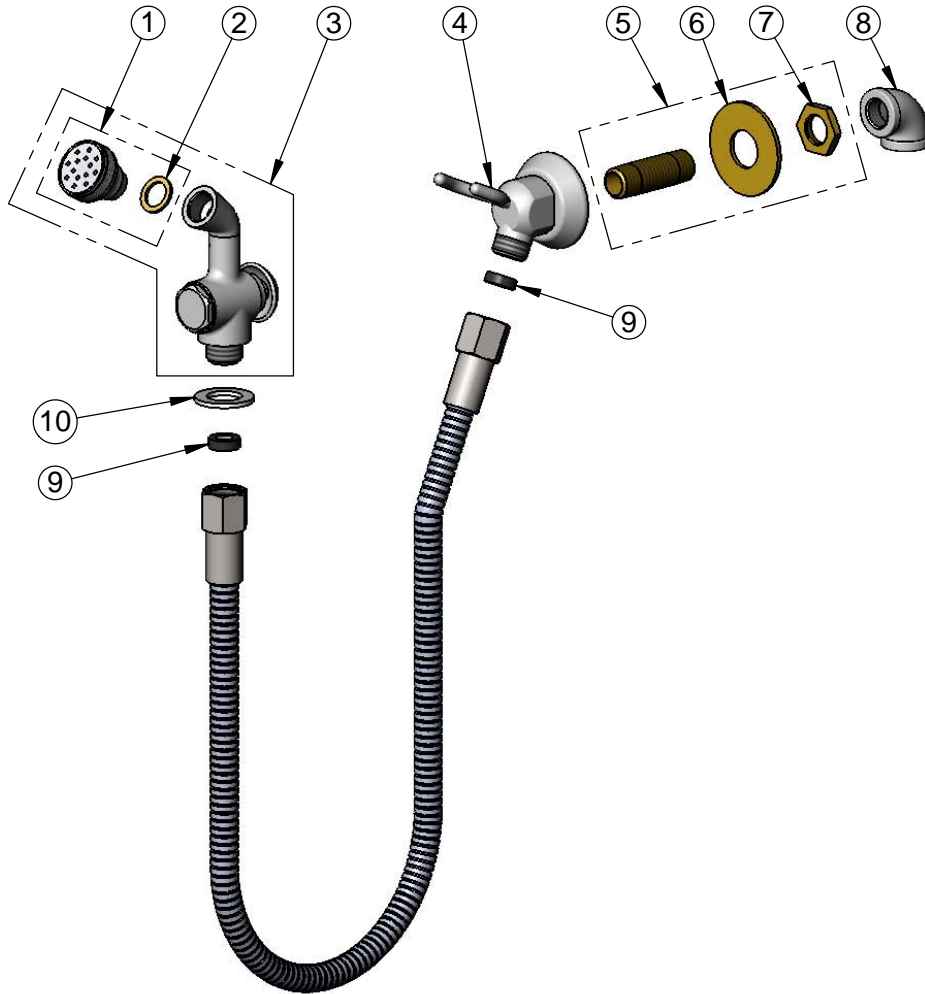
**T&S BRASS AND BRONZE WORKS, INC.**  
 2 Saddleback Cove / P.O. Box 1088  
 Travelers Rest, SC 29690

Model No.  
**B-0101-ENP**

Item No.

Travelers Rest, SC: 800-476-4103 • Simi Valley, CA: 800-423-0150 • Fax: 864-834-3518 • www.tsbrass.com

ITEM NO.	SALES NO.	DESCRIPTION
1	B-0103	Rosespray Outlet
2	001043-45	Washer
3	002857-40	Spray Valve w/ Rosespray Outlet
4	B-0104	Wall Hook w/ 3/4-14UN Outlet
5	B-0428	3/8" NPT Supply Nipple
6	000998-45	Washer
7	000969-45	Nut, Lock, 3/8" NPSL, Brass
8	001355-40	Elbow, 3/8 NPT
9	010476-45	#27 Washer
10	001010-40	Washer, Stainless Steel



Product Specifications:  
 Spray Valve w/ 28" Flexible Stainless Steel Hose, Wall Hook,  
 3/8" NPT Supply Nipple & 3/8" NPT Elbow

Product Compliance:  
 ASME A112.18.1 / CSA B125.1  
 NSF 61 - Section 9  
 NSF 372 (Low Lead Content)  
 EPA 2005 Non-Compliant (PRSV)