



Architect/Engineering Specifications:

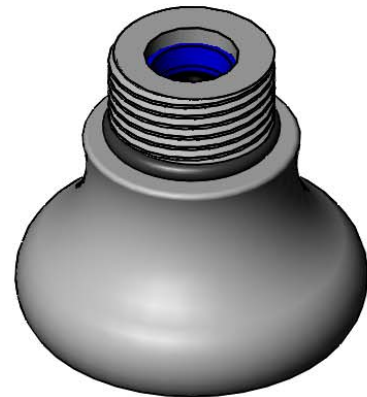
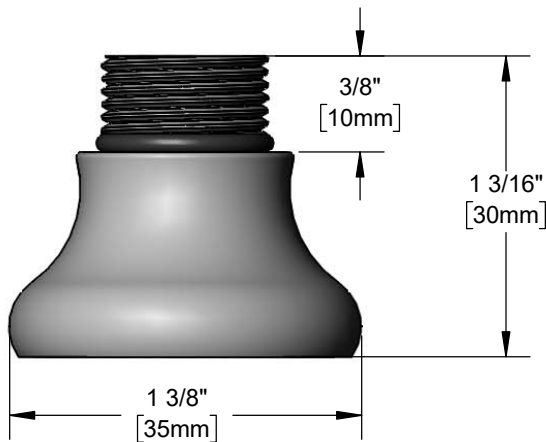
Rosespray with multi-laminar (non-aerated) spray pattern, 1.0 GPM flow disc regulator (Blue) and 3/8" NPT male threads. Certified to ASME A112.18.1/CSA B125.1, NSF 61-Section 9 and NSF 372.

Job Name _____

Model Specified _____ Quantity _____

Variations Specified _____

Date _____



Features & Benefits:

- Rosespray w/ multi-laminar (non-aerated) spray pattern
- 1.0 GPM flow disc regulator (Blue)
- 3/8" NPT male thread
- O-ring included
- Fits all Series 2 T&S nozzles
- Material: Solid brass body

Product Compliance:

- ASME A112.18.1 / CSA B125.1
- NSF 61 - Section 9
- NSF 372 (Low Lead Content)



Warranty: One Year (Limited)

Performance Data:

- Pressure: 20 - 125 psi
- Temperature: 40 °F - 140 °F
- Flow Rate: 1.0 GPM @ 60 psi

